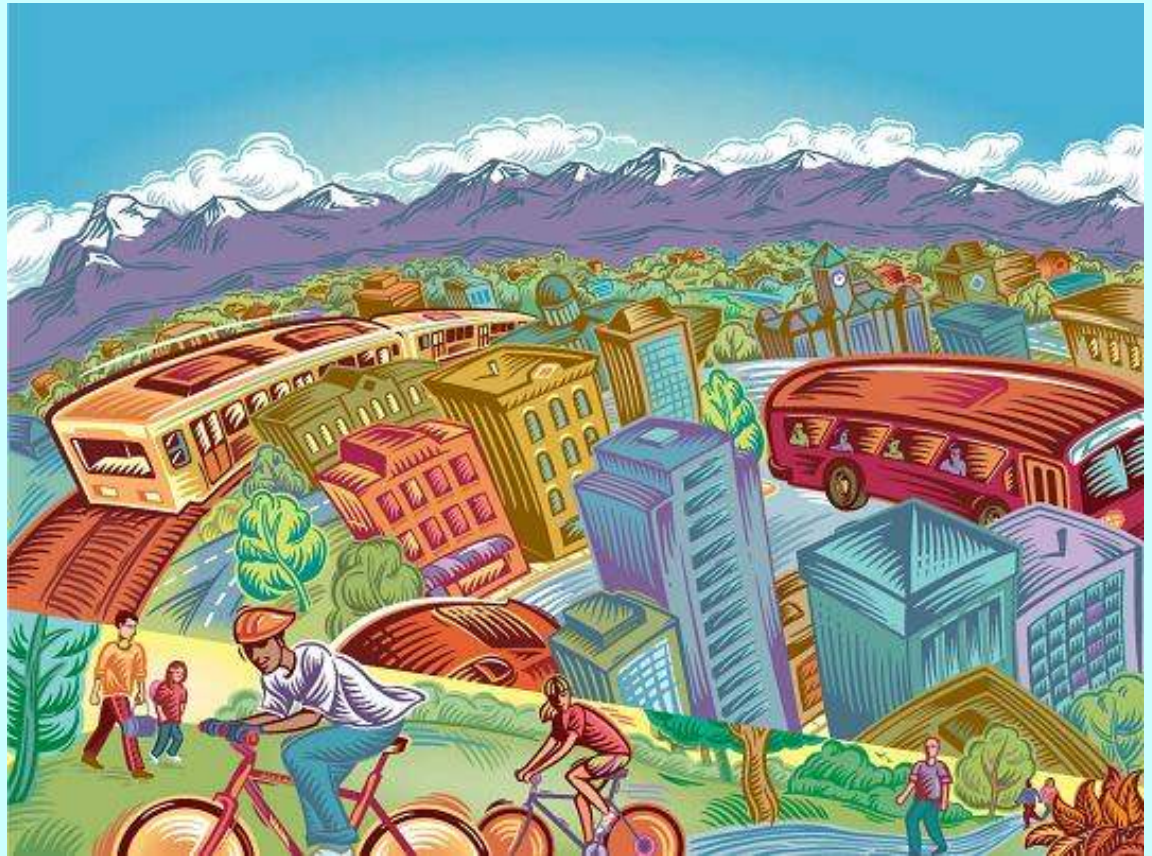


Rail-Volution

BRT Systems

**Making Local
TOD Happen**



Presented by
Jack Gonsalves, P.E.
PB Transit & Rail Systems

BRT System Eugene-Springfield

Franklin Corridor BRT

- 4 mile starter line – 6 stations
- Downtown transit center anchors each end
- Revenue service – Fall 2006

Pioneer Parkway BRT

- 5.8 miles – 8 stations
- New hospital campus / mall north terminus
- Preliminary Engineering EIS





Springfield Station - Shaped Downtown, Shaped Development



Transit Agency Perspective -

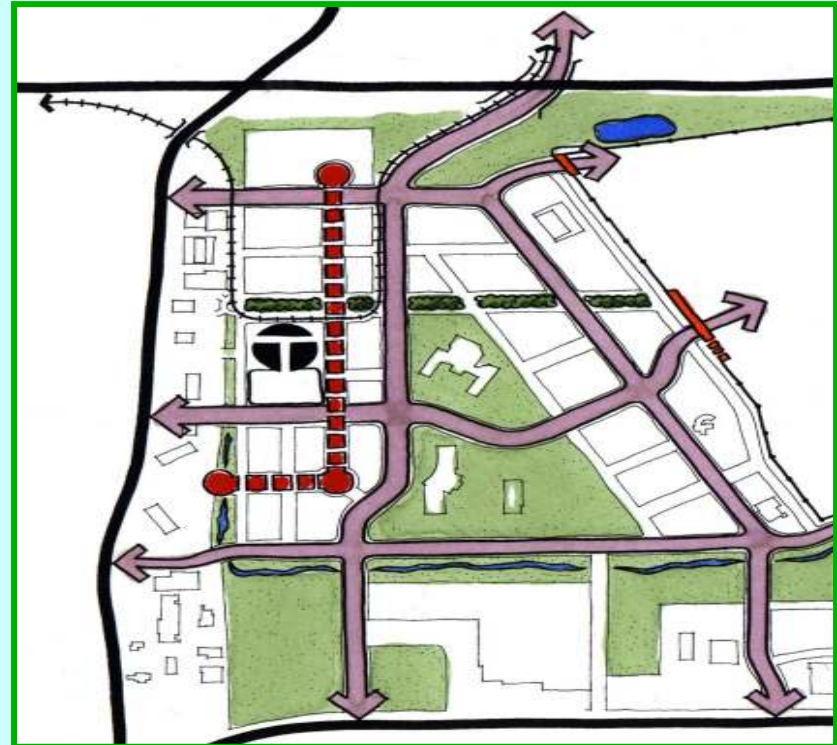
- Route connectivity
- Service Frequency
- Safety
- Ridership expansion

City Planning Perspective -

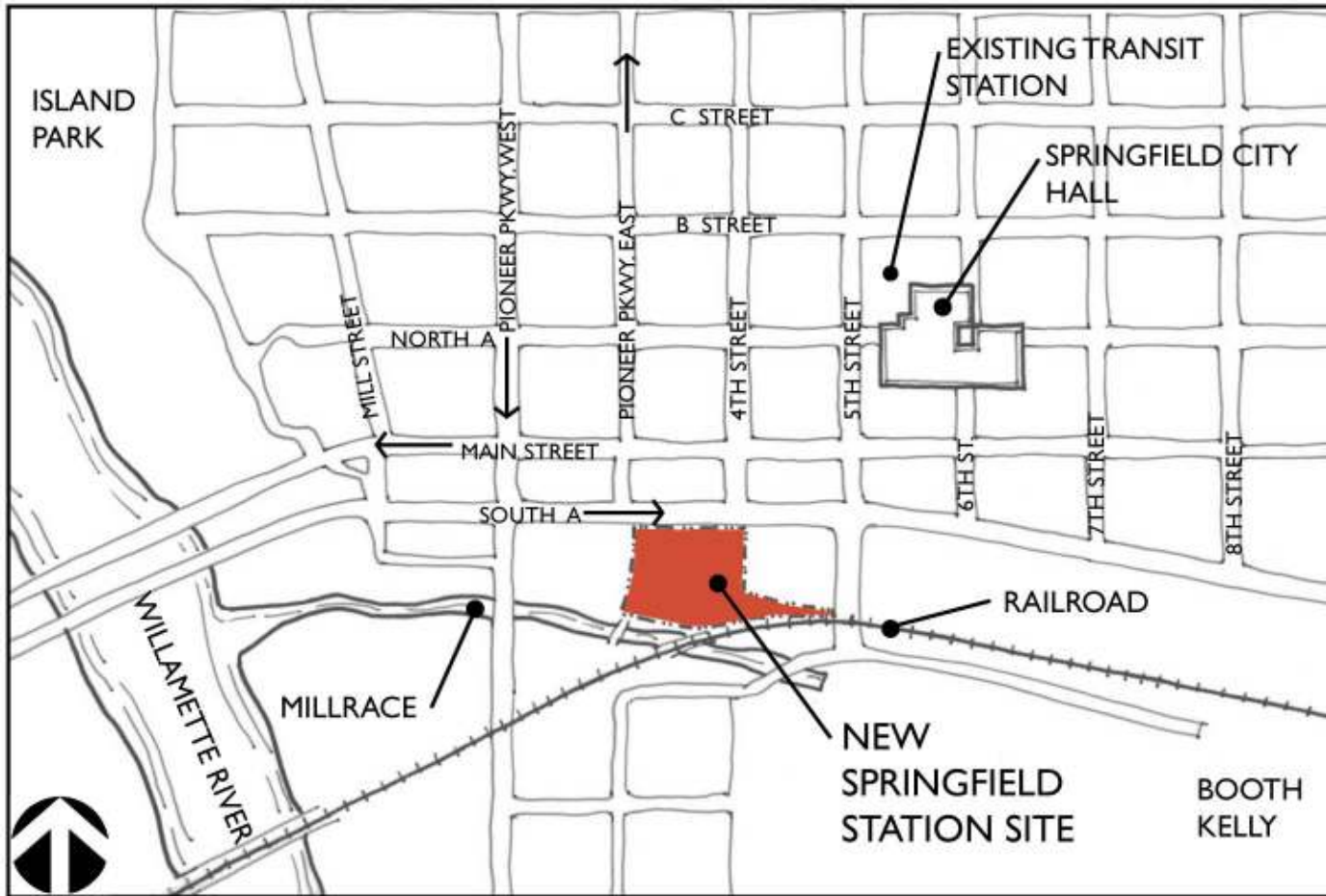
- Transit Agency is a Developer!
- Development - shaped by transit system/facility
- Creating a “Place” not a “Node”

Transit designed with development in mind

- Economic revitalization
- Corridor/Site selection
- Station function/safety
- Design for Pedestrian
- Capacity/speed of mode
- Parking location
- Community partnerships
- Land use vision/policy
- Traffic flow/access



Site Selection to Support TOD



Rail-Volution

Site selected to support TOD



PB
100
YEARS

Apply the Power of Partnership

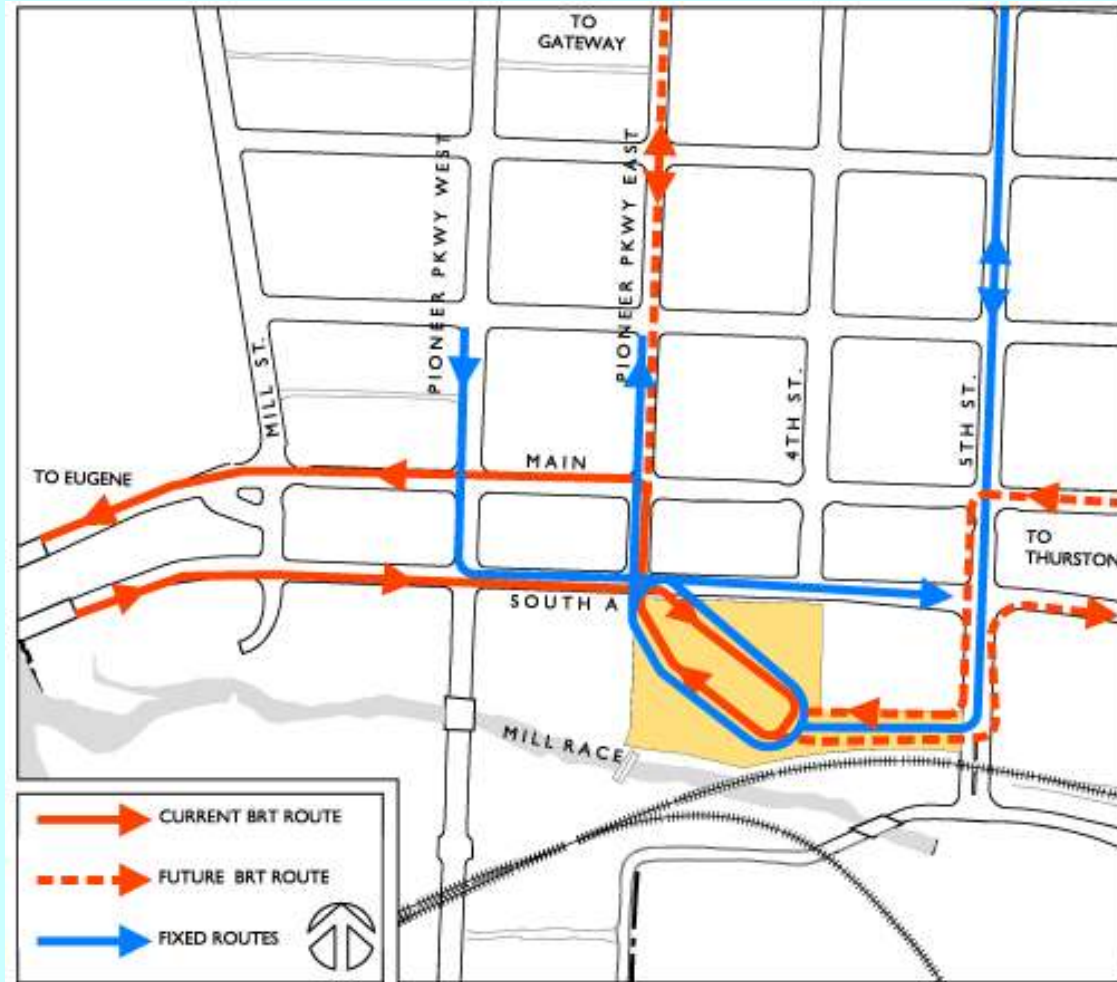
**Change the process – What should be different?
Have transit supportive land use Policy in place**

Early Roundtable meeting

- **Meet with economic development staff**
- **Community**
- **Crime**
- **Housing**
- **Design for the pedestrian - Safety crossing for Ped access**
- **Safe environments**

Include Planning Department in Site Selection

Traffic Circulation



Rail-olution

Apply the Power of Partnership

City Planning took proactive steps to be prepared

Pedestrian circulation study

Downtown growth revitalization Study

housing needs assessment

Crime mitigation

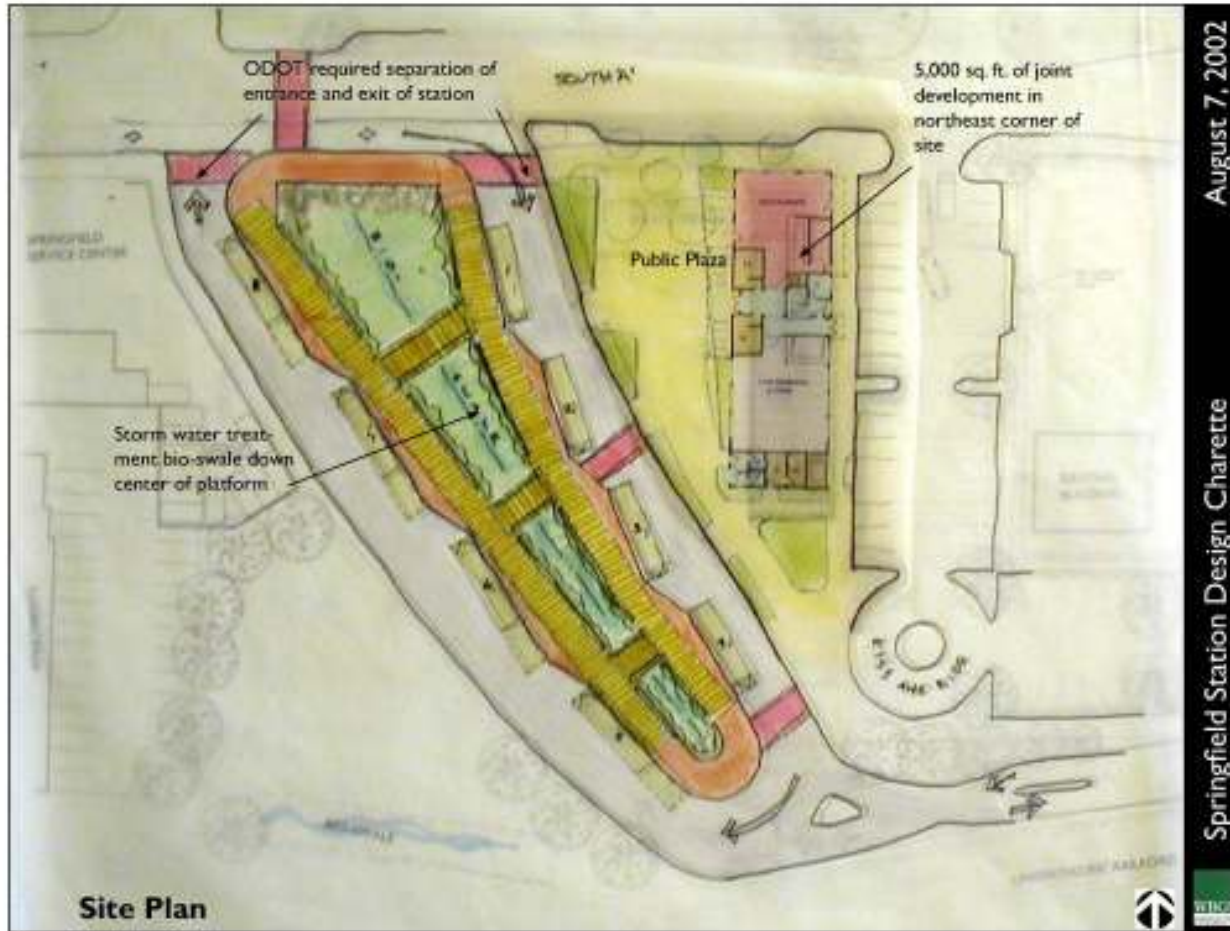
Traffic circulation and Parking

LTD/WBGS proactive with Station Area Planning

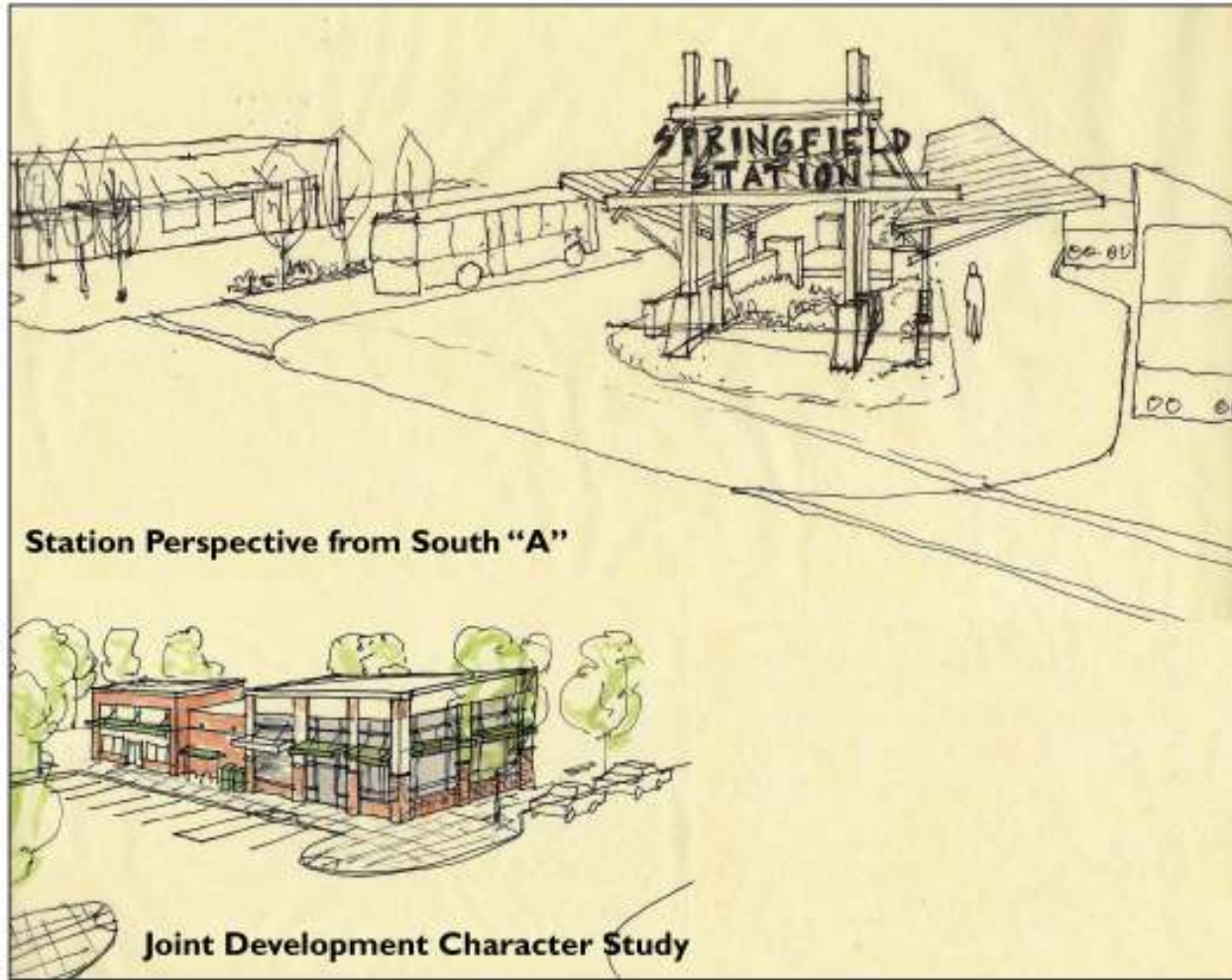
Invited City planning as TAC member



Station Area Planning



Station Area Planning



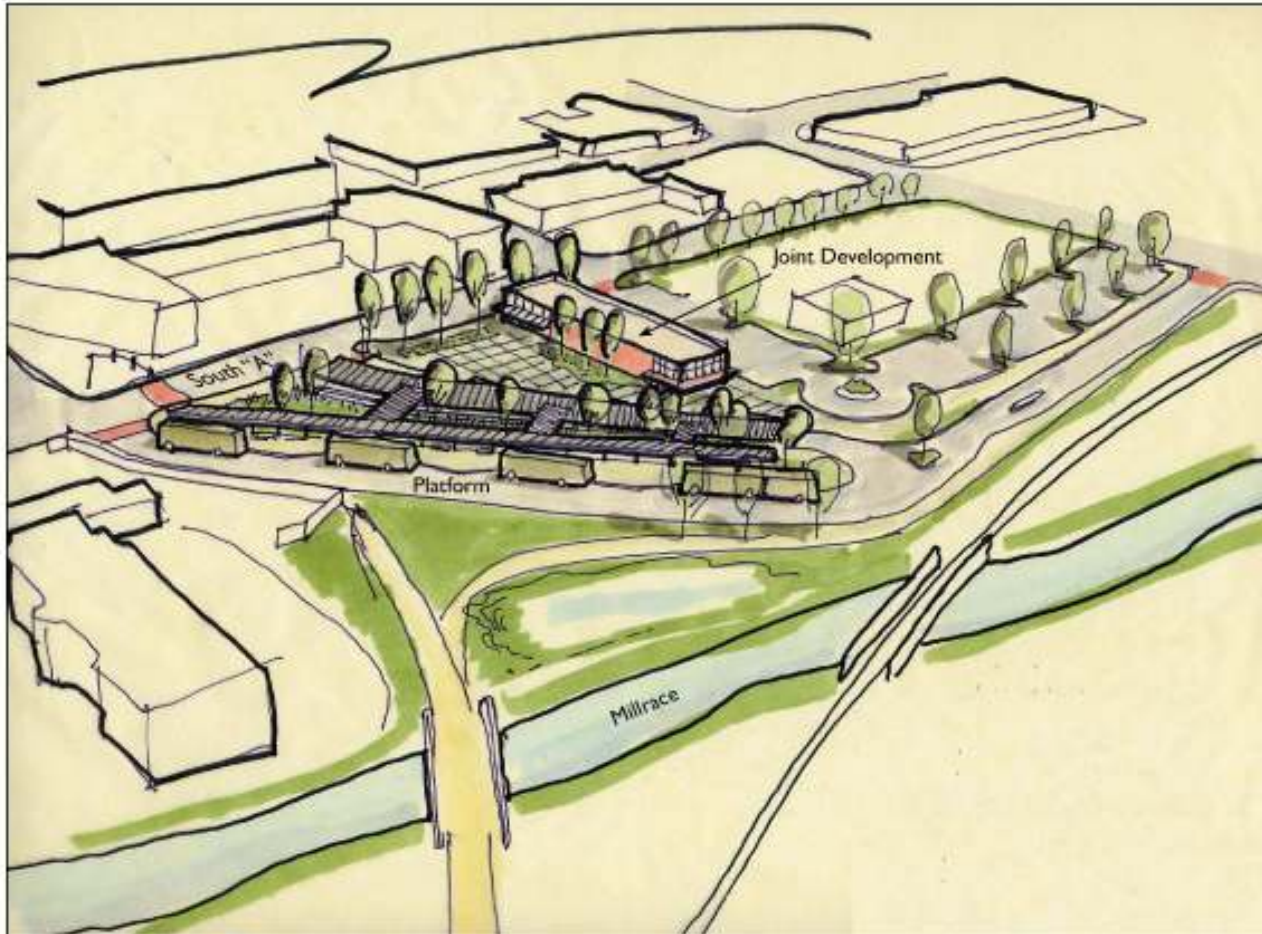
Station Perspective from South "A"

Joint Development Character Study

August 7, 2002

Springfield Station Design Charette

Station Area Planning



August 7, 2002

Springfield Station Design Charette

Aerial Perspective from Southwest



Rail-Volution

Transit Supports Development



Rail-Volution

Inside the Site

**Joint tenant – beyond 9-5
late night presence**

Bathrooms in restaurant

Street connectivity

Kiss and Ride Drop off

Parking for commuters

**Active interaction for
patrons**

– a sense of place

Access to coffee



Rail-Volution

Springfield Station Oregon



**Springfield Station – opened
October 2004**

**Retail tenant inside LTD's station
building 3400 SF – Burrito Boy**

**4 additional new businesses in
adjacent block within last year**

**First new *commercial* building in
downtown core for 30 years**

**Partnered with city planners to
serve as key anchor for downtown
core revitalization**



Rail-Volution

Development Happened



Rail-Volution

Development Happened



Rail-Volution

Lessons

**Establish planning vision
policy for vision in place**

Site selection -

Roundtable –

**Station Area Plans – design
for the pedestrian
ridership will happen**



PB
100
YEARS