



**Flexcar and Transit:
Four Partnerships for Better
Mobility**

Flexcar™

Flexcar

How it Works



- 1. Reserve a vehicle**
- 2. Go to your reserved vehicle**
- 3. Unlock door with your keycard**
- 4. Enter PIN, start car, go!**
- 5. Return vehicle in time for next member**



SHIFT YOUR THINKING

HOME | VISION | COMPANY | JOIN

Reserve a Vehicle

My Reservations

Erin L. Kelley [Log Out](#)

4 vehicle and time

Region:

Portland Metro

Neighborhood:

Downtown: Central

Vehicle Type

(Any)

[Help](#)

Wednesday, July 27, 2005

Midnight

Noon

12 1 2 3 4 5 6 7 8 9 10 11 12 1 2 3 4 5 6 7 8 9 10 11

<input type="radio"/>	1141		S.W. 10th & Alder Streetcar Stop	
<input checked="" type="radio"/>	1101		S.W. 10th & Stark	
<input type="radio"/>	1138		S.W. 1st & Jefferson (Smart Park Garage)	
<input type="radio"/>	1136		S.W. 2nd & Morrison St. (ODS Tower)	

Next 4 Vehicles

[Show Legend](#)

From:

2:00 p.m. on Wednesday, 7/27

Until:

4:30 p.m. on Wednesday, 7/27

[Back](#)

[Reserve](#)

4 Transit-Supportive Partnerships

1. Flexvan "Last Mile" Shuttles
2. Transit Co-Location
3. University & Office Park Campuses
4. Transit Augmentation

Flexcar

1. "Last Mile" Flexvan Shuttles



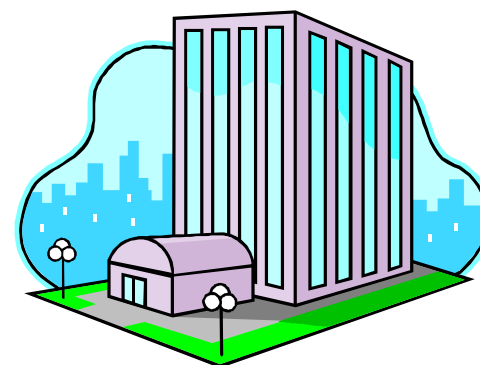
1. Flexcar minivan shuttles employees between rail station and office park or campus. Employer provides shuttle driver.
2. When not in use as an employee shuttle (i.e. mid-day), the van is available for employees' use.
3. Eves & weekends – Flexcar general use minivan at light rail station.
4. Why? More flexible, much cheaper than transit agency-run shuttles.

<u>Time</u>	<u>Access</u>	<u>Location</u>
6A-6P M-F	Employees only	Jobsite
Evenings & Weekends	All Flexcar Members	Transit hub (light rail; park & ride, etc.)

Transit Station



Job Site



2. Transit Co-location

- 1. Transfer points between bus lines**
- 2. Park & Ride lots**
- 3. Light Rail stations**
- 4. Streetcar stops**
- 5. Amtrak & commuter rail stations**



3. University & Office Park Campuses

“A strong relationship with Flexcar has contributed significantly to increasing PSU’s mode split from 36% to 44% over two years.”

Dan Zalkow

Transportation & Parking Manager

Portland State University

4. Transit Augmentation

“I haven’t had use for a Flexcar yet, but that’s not to say that Flexcar hasn’t changed my life...”

...Before my company joined Flexcar I drove to work most of the time just in case I needed a car for errands or meetings. The times I actually needed my car were EXTREMELY rare, but I needed to have that coverage.

Since joining Flexcar I have purchased a bus pass every single month and I take mass transit to work regularly. This not only has saved me money (no parking!) but it has also reduced car traffic into downtown. I couldn't have done this without the flexibility that Flexcar provides me."

David Wolf
Flexcar Member Since '04

Bringing Flexcar to Your Community: Public Sector Fleets as Catalysts

1. 30%+ savings, vs. owned fleets
2. Decreased parking demand ("your" Flexcars are used by the community, too)
3. Higher transit ridership by your employees & others
4. Many precedents – Cities, Counties & State offices

Flexcar

Thank You

www.flexcar.com

steve.gutmann@flexcar.com

503-572-4487 (cell)

877-FLEXCAR