



Chicago 2006

Sustainable Design for Sustainable Mobility

Moderator

Michael Townes, CEO

Hampton Roads Transit

Hampton Roads, VA

Sustainable Mobility Panel

- **David Taylor** – Director of Sustainable Transportation Solutions, HDR Tampa
- **Janet Attarian** – Project Director, Chicago Department of Transportation
- **Randy Neufeld** – Chief Strategic Officer, Chicagoland Bicycle Federation
- **Kathy Leotta** – Lead Transportation Planner, PB, Seattle

Accelerating Change and Sustainable Solutions



Concept:	Overcome Nature	Regulate Deterioration	Best & Highest Values
Implementation Drivers:	Industrial Development	After-the-Fact Consideration	Competitive Communities
Performance Factors:	Man-Made Dominance	Legal Compliance	Quality of Life 

Land Use, Mobility & Sustainability

- **Quality of Life**
 - Transit Can Influence New Settlement Patterns and Promote Community Revitalization
 - Complete Streets Promote Multiple Modes and Uses
- **Economic Development**
 - Transit Can Help Unleash Economic Potential
- **Environmental Policy**
 - Transit is an Environmentally Responsible Mode
 - Green Facilities and Infrastructure Provide Positive Cumulative Effects

Sustainability – The Triple Bottom Line

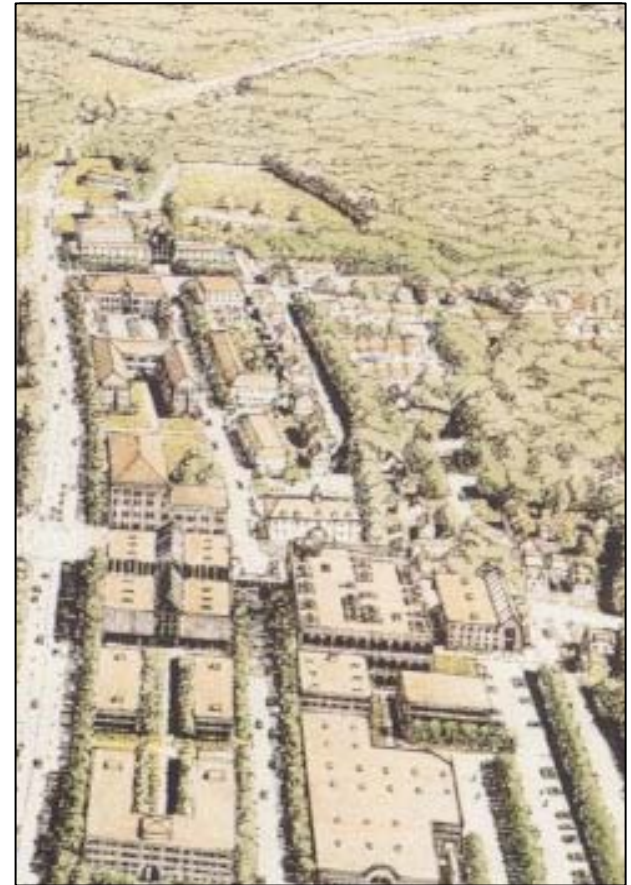
- **Environmental** – Stewardship and Minimize the Environmental Footprint
- **Social** – Equity, Diversity and Community
- **Economic** – Cost-effective, Mixed Use and Affordable



Sustainable Development Trends

Smart Growth

- Efficient Use of Land
- Protection of Natural Resources
- Development of Mixed Use Activity Centers
- Coordination of Service Delivery
- Creation of Multi-Modal Systems



Sustainable Development Trends



Regional Growth Management

- Provide Urban/Rural Separation
- Contain Urban Sprawl
- Use Land Resources Wisely
- Sustain Economic Vitality
- Provide Modal Choices
- Promote TOD

Sustainable Development Trends



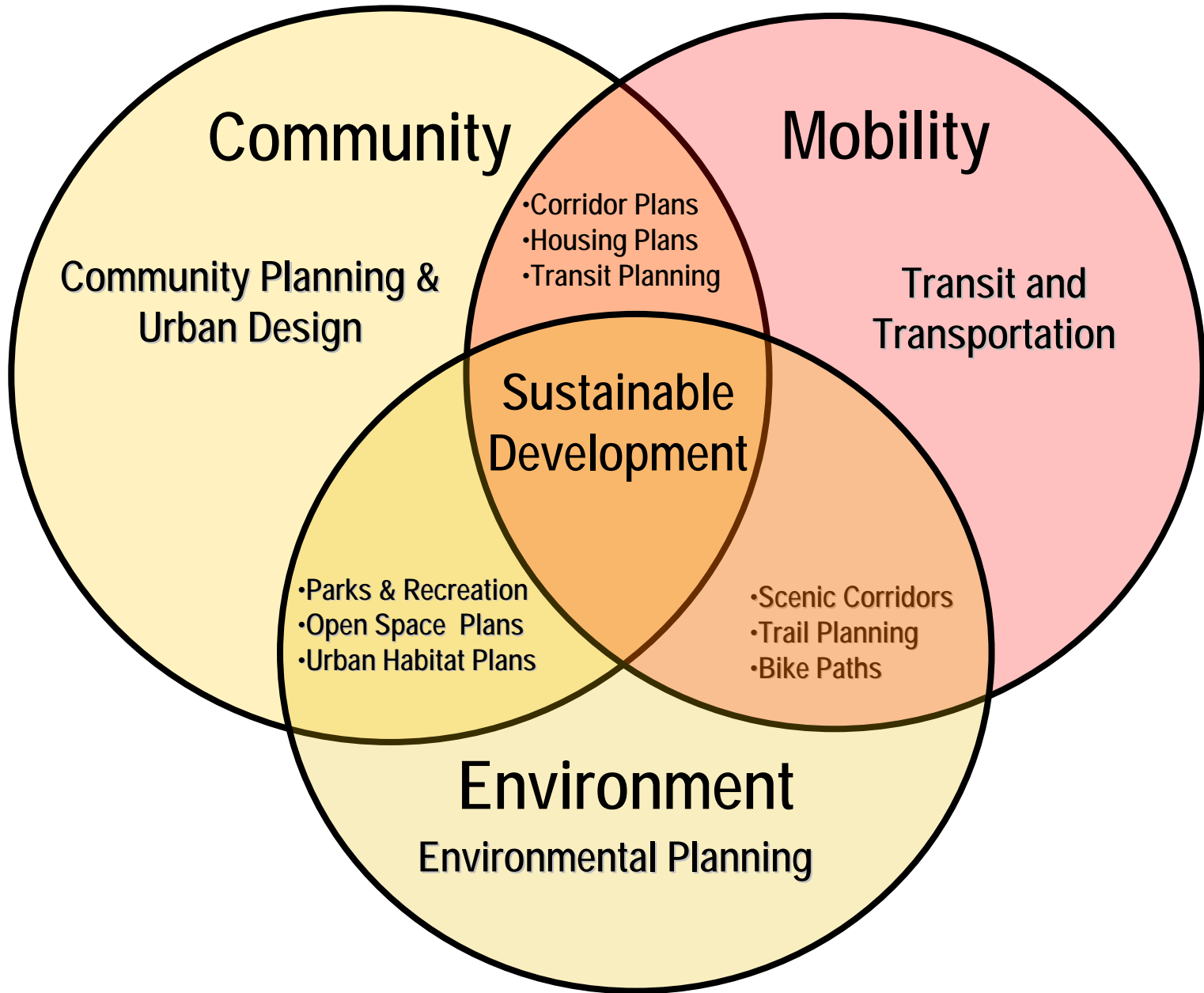
The New Urbanism

- Defined Geographic Area
- Infill and Near Suburban Locations
- Mixed Uses Within Blocks and Buildings
- Hierarchy of Street Types
- Civic Buildings and Squares
- Walkability and Connectivity
- Form-based Codes
- Accepts Transit at Core

Toward Sustainable Development



- Re-balancing Community and Mobility Needs
- Slowing Sprawl and Rapid Consumption of Land
- Changing Settlement Patterns
- Maintaining Environmental Systems
- Providing Multi-modal Choices

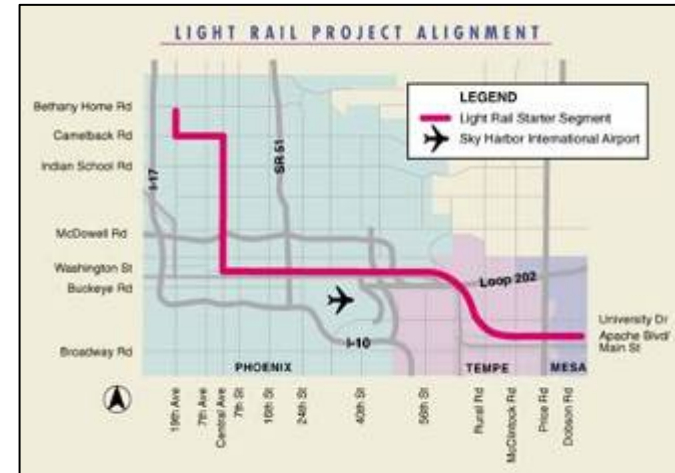


Sustainable Mobility

- Use Sustainability and Public Transit to Transform *Transportation* into Mobility
- Focus on Community Building
 - Stress Quality of Life
 - Offer Multi-modal Streets
 - Develop “Transit-ready” Places
- Translate Transportation and Land Use Planning into *Community Planning*
- Design and Construct Environmentally Responsive Infrastructure

Sustainable Public Transit

- Planning
 - System Planning
 - Corridor Planning
 - Multi-modal Applications
 - Transit-supportive Policies
 - Transit-oriented Design
 - Transit/Land Use Planning Coordination
 - Public Involvement



Sustainable Public Transit

- Operations
 - Environmental Management Systems
 - HAZMAT Management
 - Recycling/Water Reuse
 - Increased Miles/Gallon - Vehicle Modifications and Adjustments
 - Alternative Fuels/GHG Reductions
 - Route Consolidations/Adjustments
 - New Technologies and Propulsion Systems



Sustainable Public Transit

- Facilities and Infrastructure
 - Green/LEED Buildings – Offices, Maintenance Facilities, Stations, and Terminals
 - Site Development
 - Permeable Parking
 - Stormwater Management



Sustainable Mobility



Sustainable Mobility



Sustainable Mobility



Sustainable Mobility



What is a Complete Street?



A Checklist to Track Sustainability

- To Plan, Design, Construct, and Operate Transit Facilities and Services More Sustainably
- To Deliberate on Most Critical Sustainability Features
- To Develop Sustainability Design Guidelines
- To Monitor Planned Progress Toward Sustainability