

A Growth Strategy for the Northeast Megaregion

Petra Todorovich
Director, America 2050

Rail~Volution
November 1, 2007

Key U.S. Trends



Rapid population growth and demographic change



Climate change and energy security



**Crumbling
infrastructure**



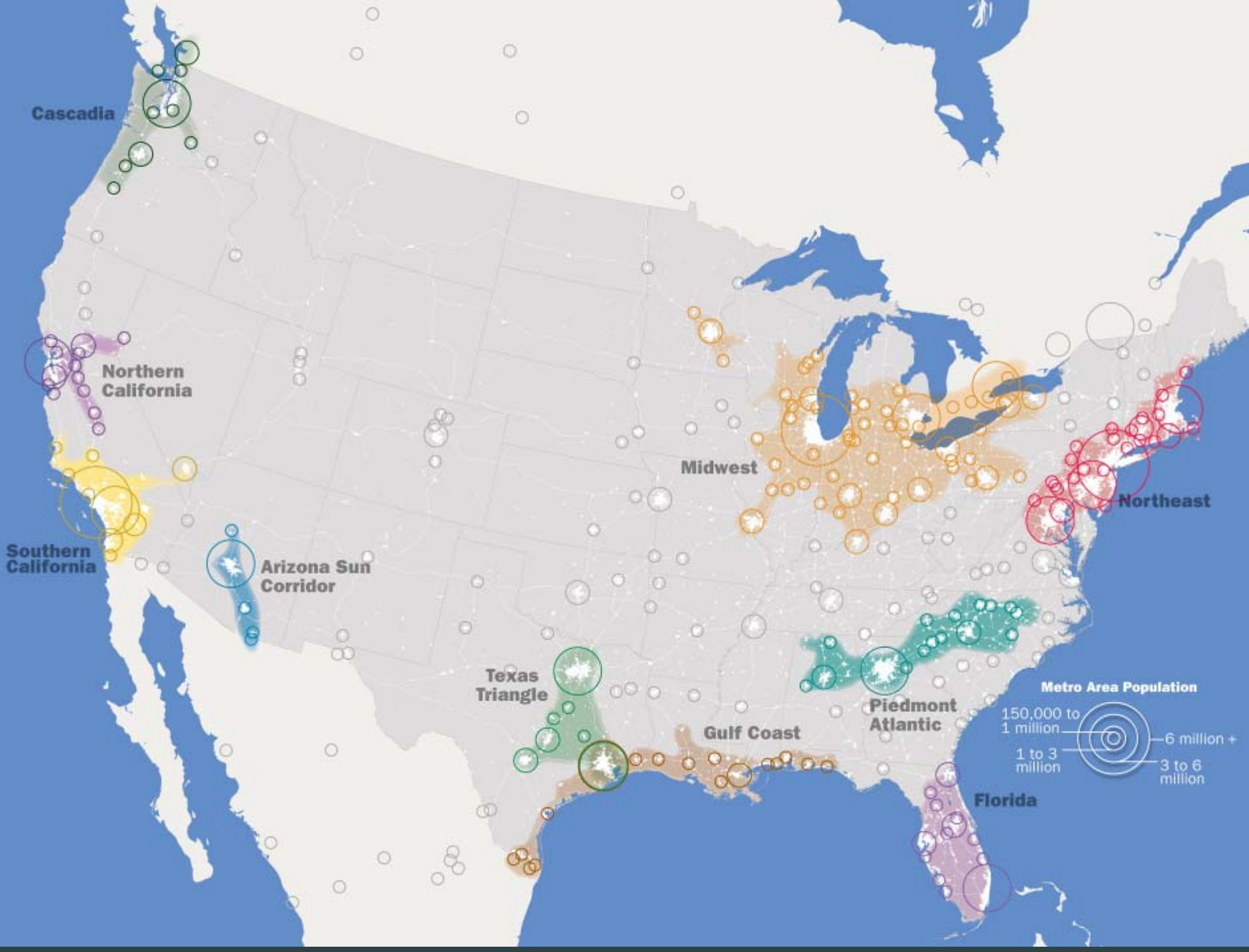
**Rising goods
movement and
foreign trade**



**Overcrowded airports
and airspace**



Longer commutes



Why Megaregions?



- Challenges occur at scale greater than metropolitan region
- Compete with global integration zones
- Foster agglomeration economies at the megaregion scale



National Goals Megaregion Strategies

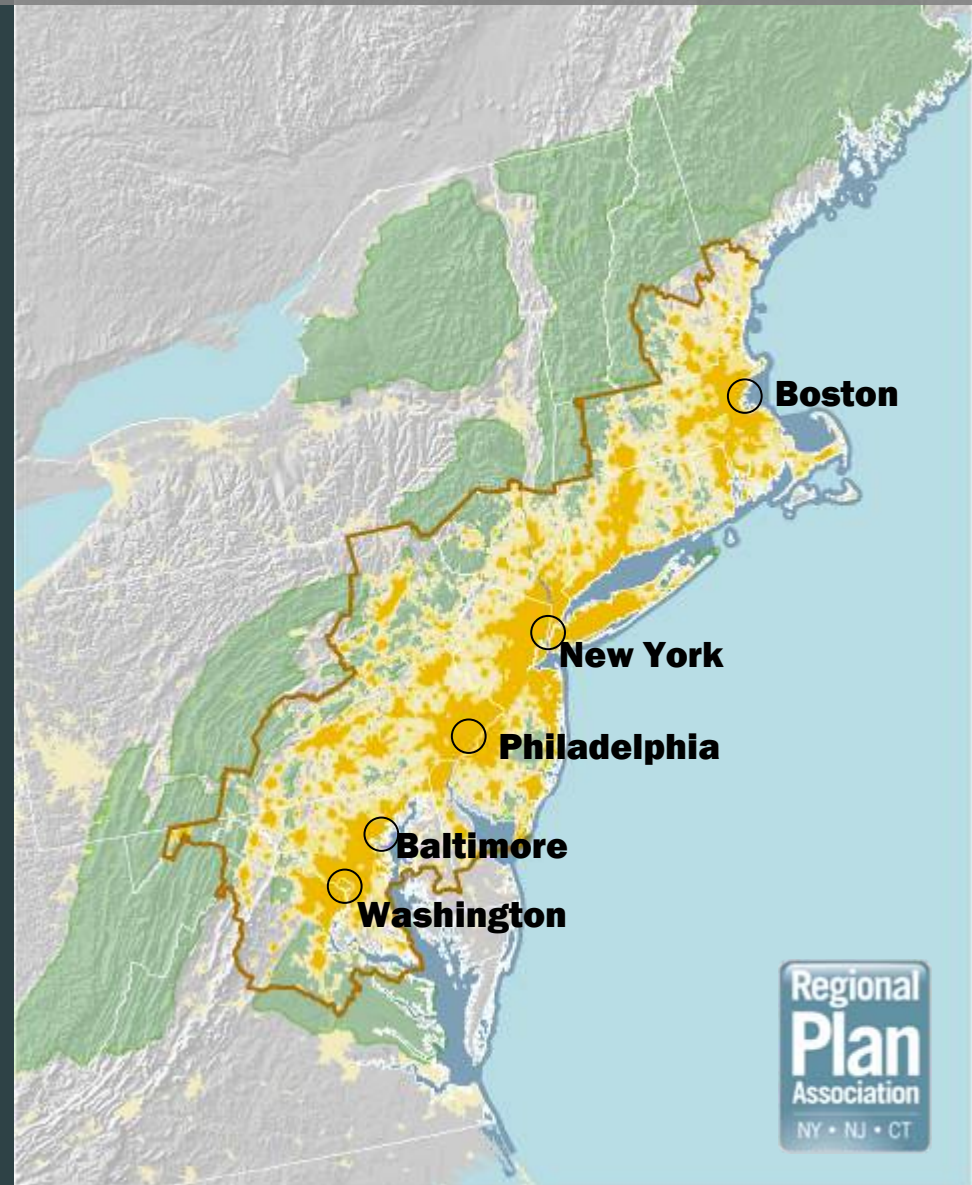
1. Invest in the nation's transportation system including key global gateways and megaregional systems.
2. Revitalize under-performing regions and America's older industrial cities.
3. Protect natural resources, watersheds, and mitigate climate change.





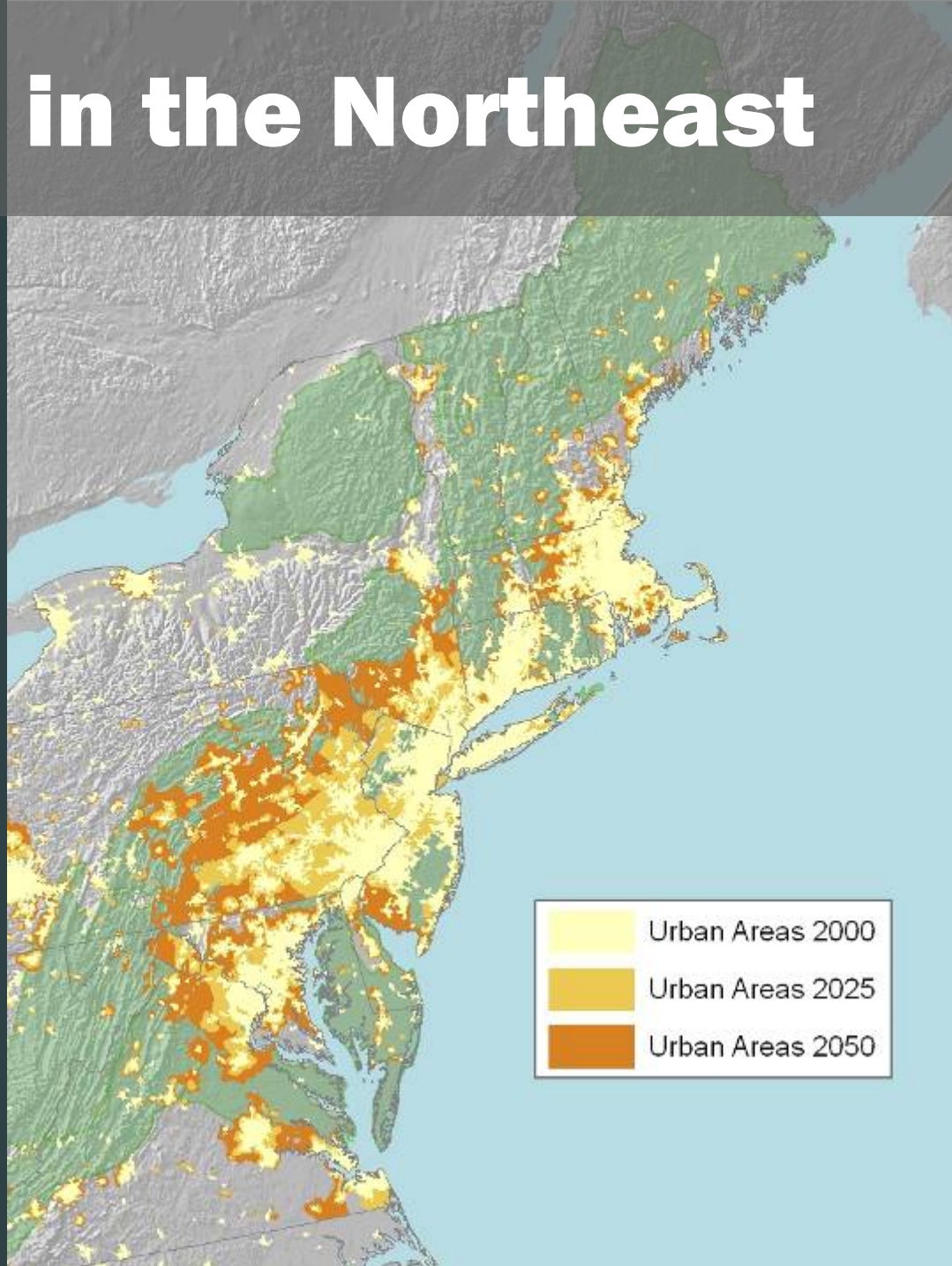
The Northeast Megaregion

- 49 million inhabitants
- 17% of U.S. population on 2% of the land area
- 20% of U.S. GDP
- Will add 19 million additional people by 2050



Challenges in the Northeast

- High land consumption
- Job growth lagging the nation
- High housing cost burdens
- Congestion & aging infrastructure



**Source: RPA GIS Model,
Woods & Poole County
Population projections**

Large Landscapes and Estuaries



Source: RPA, adapted from the Appalachian Mountain Club

Transportation Infrastructure

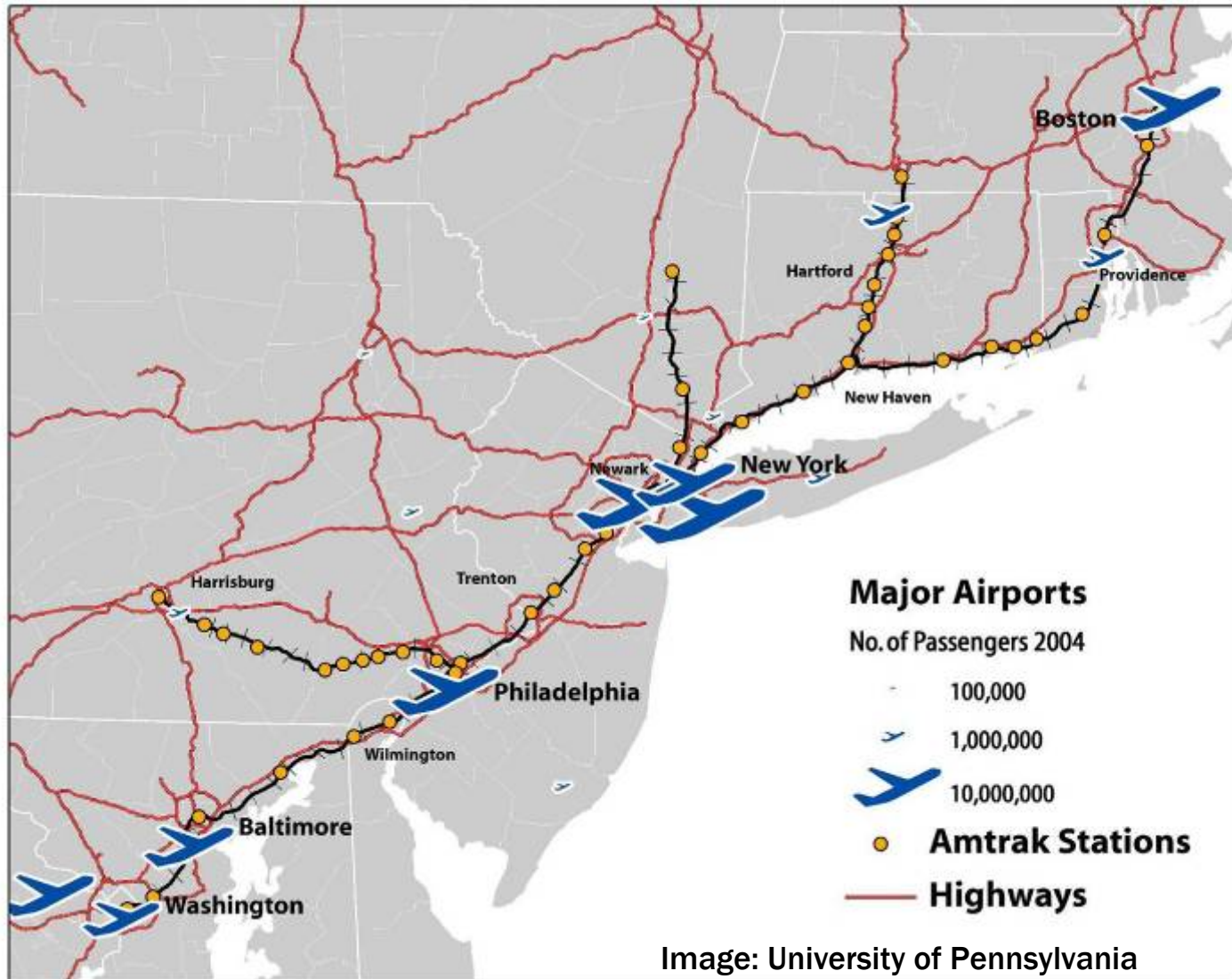


Image: University of Pennsylvania

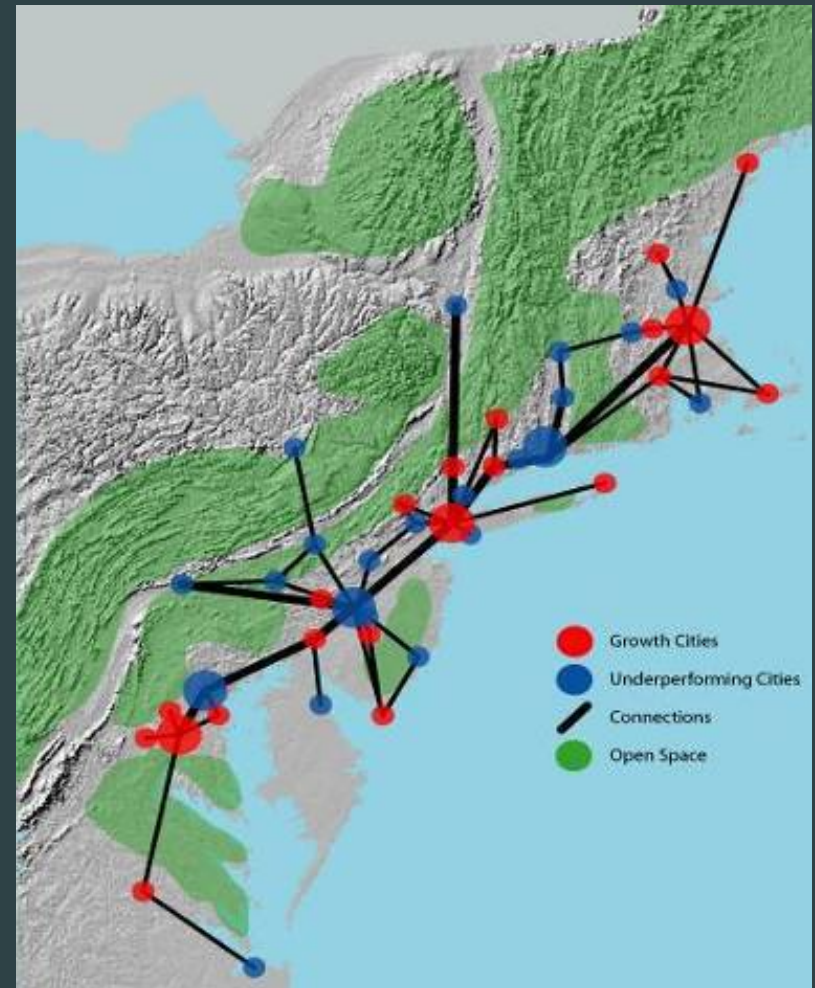
Increase capacity for Economic Growth



- 20 percent of flights in the NY Metro region are 350 miles or less
- By 2010 airfields at Newark and JFK will approach capacity
- Provide alternatives to truck-congested highways

Revitalize Older Industrial Cities

- Enhanced local transit, regional rail, station area development
- Intercity rail connecting “hot and cold” cities



Meet Targets for Greenhouse Gas Reductions



- On a per passenger basis, Amtrak is:
 - 18% more energy efficient than airlines
 - 17% more efficient than autos

(Source: Oak Ridge Nat'l Lab. Transportation Energy Data Book)
- Air travel has greater GHG impact than ground emitters.
 - (CO₂, H₂O, NO_x in stratosphere.)

Density Peaks: Hubs of Face-to-face Communication



Business Alliance for Northeast Mobility

1. NY-Philadelphia
Leadership
Exchange: Oct-Nov
2006



Northeast Summit Mar 2007



2. Northeast Climate
and
Competitiveness
Summit: Mar
2007



Leadership Exchange Oct 2006

3. Business Alliance
for Northeast
Mobility: Activities
2007-2008



National Policy Reform

Transportation authorization 2009 and beyond

- Define a national transportation investment program
- Maintain the existing system
- Empower regional decision making
- Adjust pricing signals
- Break down modal silos
- Institute performance measures



www.America2050.org