

# PLACES TO GROW

BETTER CHOICES. BRIGHTER FUTURE.

## Planning for Growth in the Greater Golden Horseshoe

October 28, 2008

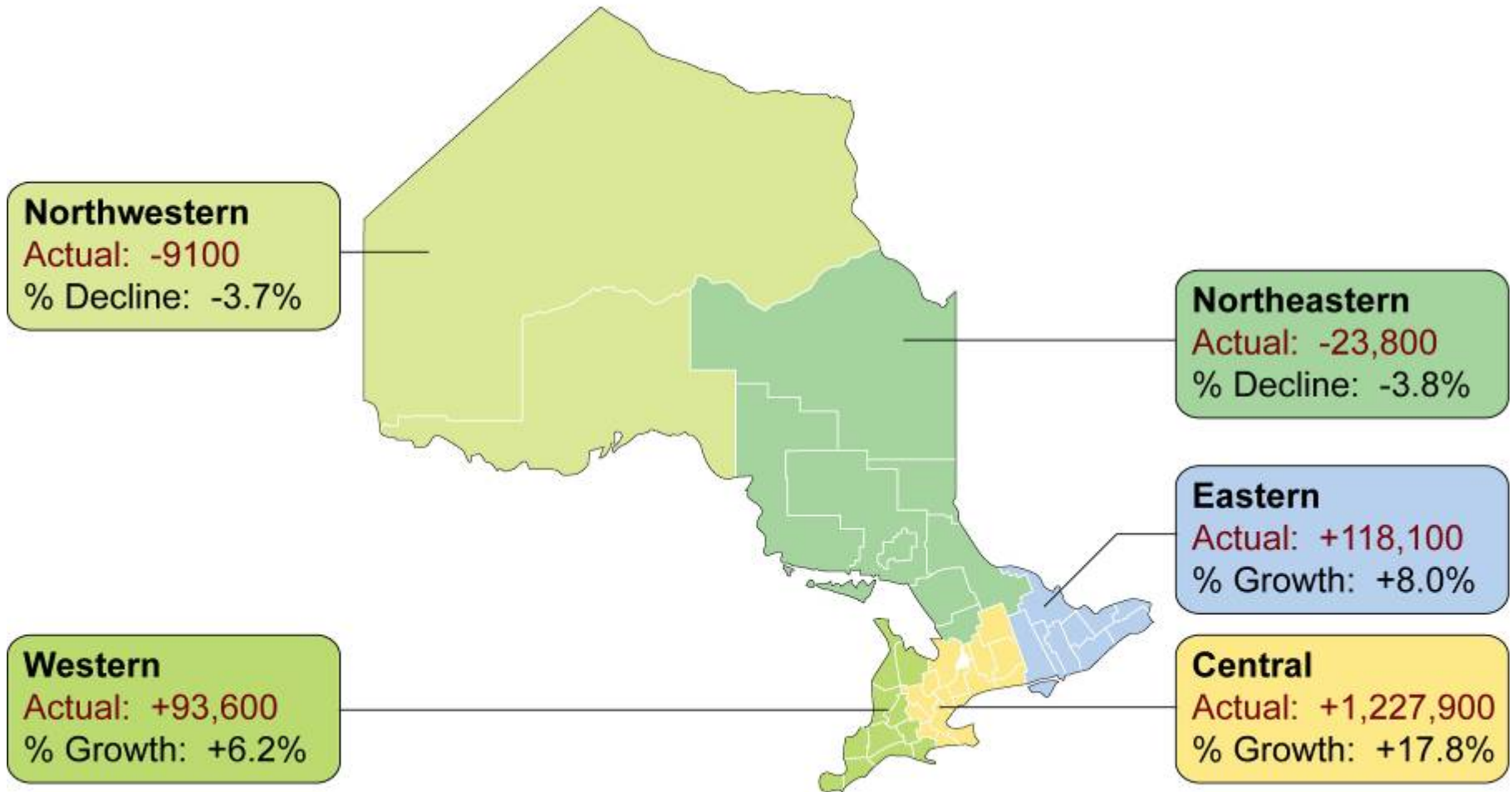
Ontario Growth Secretariat

Ministry of Energy and Infrastructure

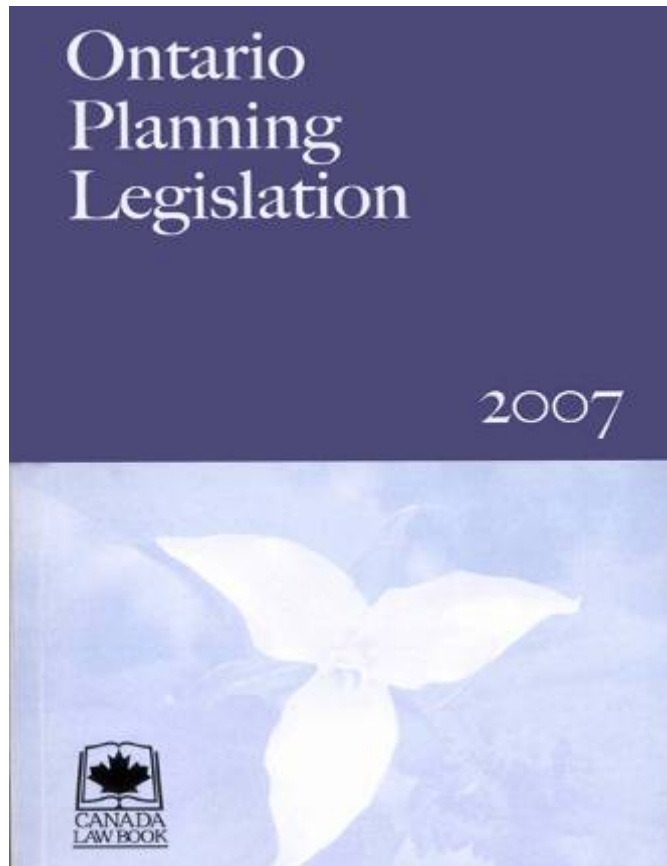


# Population Change 1996-2006

Source: Statistics Canada



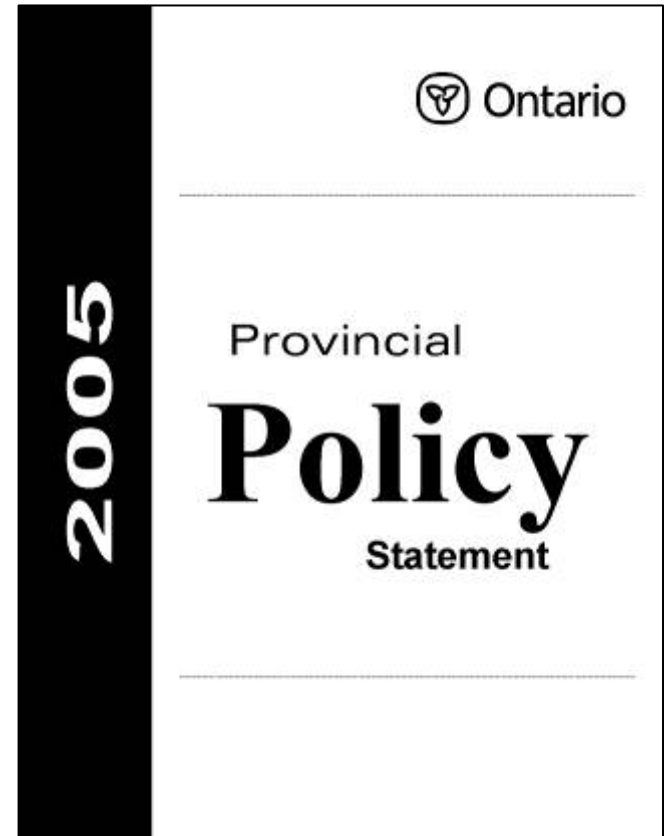
# Land Use Planning in Ontario



- Planning Act provides the legislative framework for land use planning in Ontario.

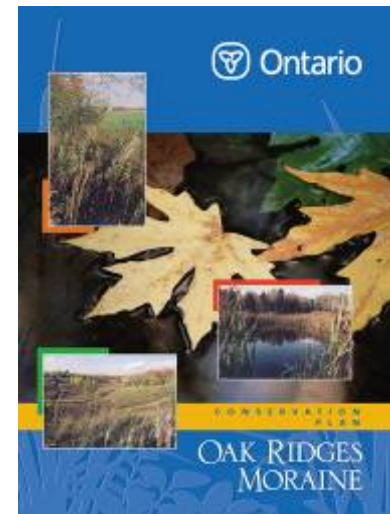
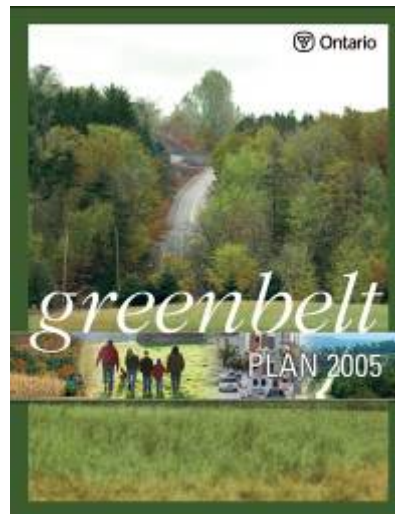
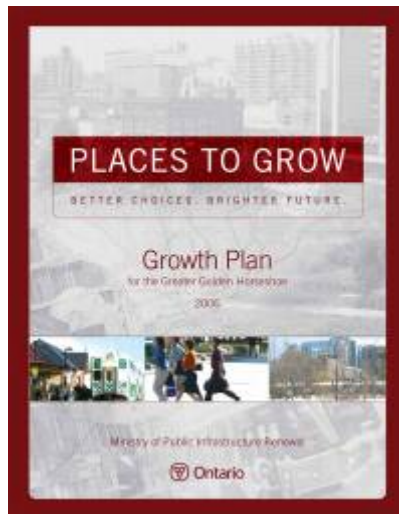
# Land Use Planning in Ontario

- Provincial Policy Statement establishes province-wide planning policies.
- Articulates provincial interest in land use matters.
- Municipalities and other decision-makers shall “be consistent with” the policies in their decision-making on planning.



# Land Use Planning in Ontario

- Provincial plans provide provincial direction for specific geographical areas of Ontario.



# Ontario's Greater Golden Horseshoe

- 12, 000 square miles - centred around Toronto.
- Economic engine of Ontario.
  - Represents 70% of Ontario's GDP.
- Covers 21 counties and regions, comprising 110 different municipal jurisdictions.
- Largest city region in Canada.
  - One quarter of Canada's population (7.8 million people in 2001).
- One of the fastest growing urban regions in North America.
  - Forecast to grow by 3.7 million people and 1.8 million jobs by 2031.





# Ontario's Greater Golden Horseshoe

A highly diverse region:

- Highly urbanized Greater Toronto Area along the north shore of Lake Ontario.
  - Current population: 6 million people.
- Dozens of mid-sized cities and small towns.
- Some of the best agricultural lands in Canada.
- Cottage and resort areas in the northern part of the region.
- Important natural areas.



# Benefits of a Growth Plan

## Environmental

- Improved air quality.
- Reduced development pressures on natural areas and agricultural land.
- Clear connections between urban form and climate change.



## Economic

- Global competitiveness.
- Reduced traffic congestion.
- Infrastructure savings.



## Health

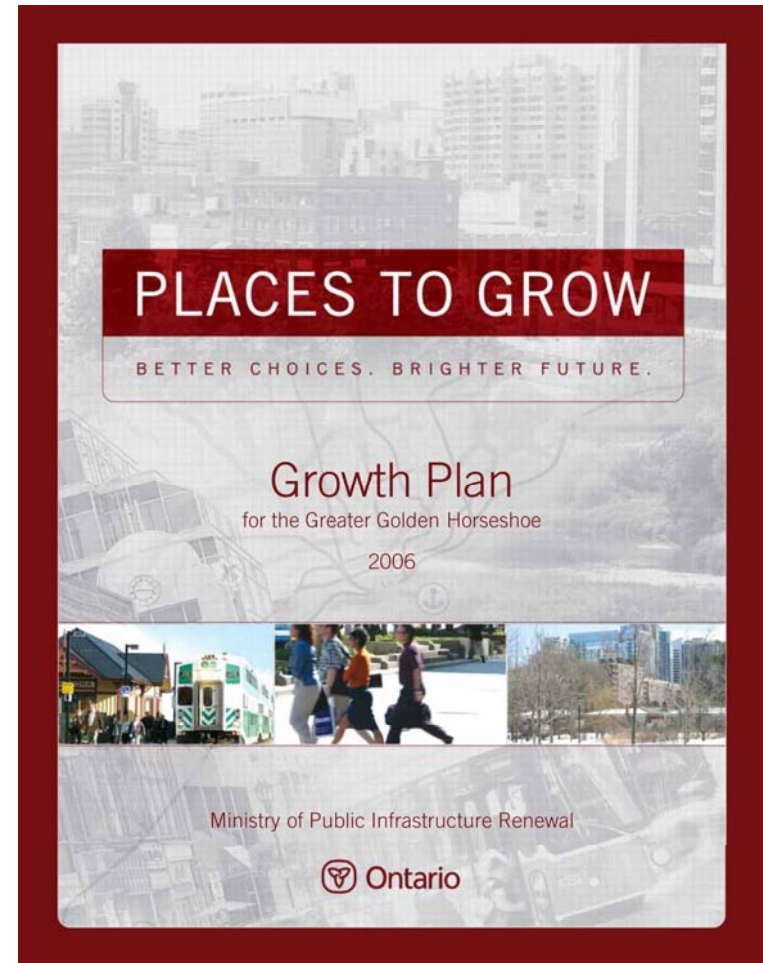
- Clear links between car-dependent communities and increased obesity rates, high blood pressure and cardiovascular disease.





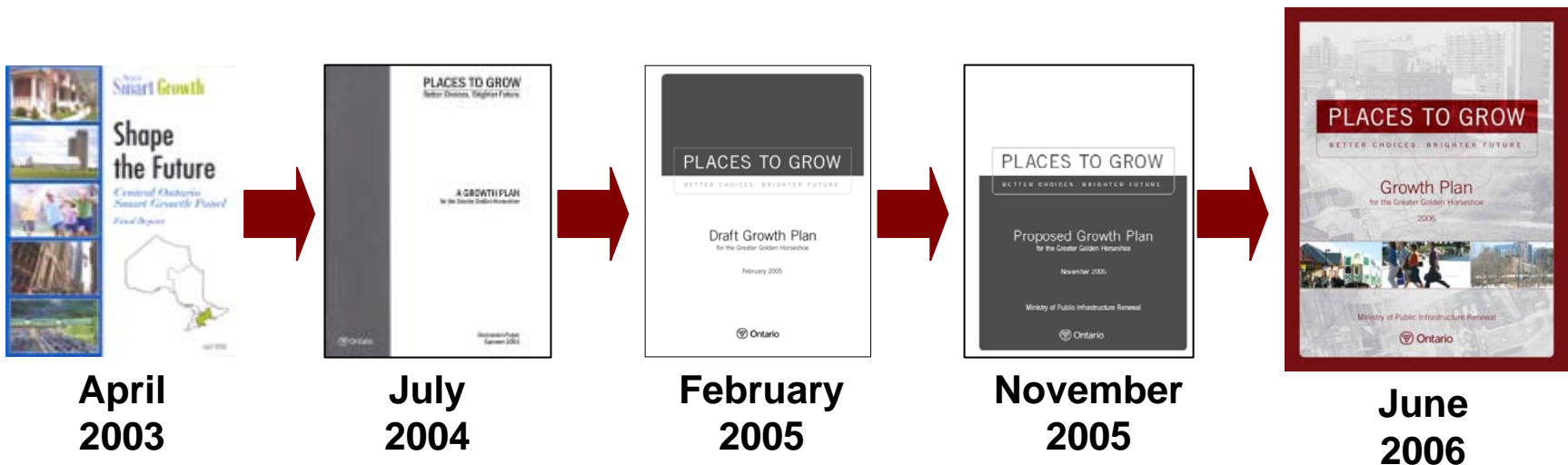
# Growth Plan for the Greater Golden Horseshoe

- Growth Plan for the Greater Golden Horseshoe released by the Ontario government in June 2006.



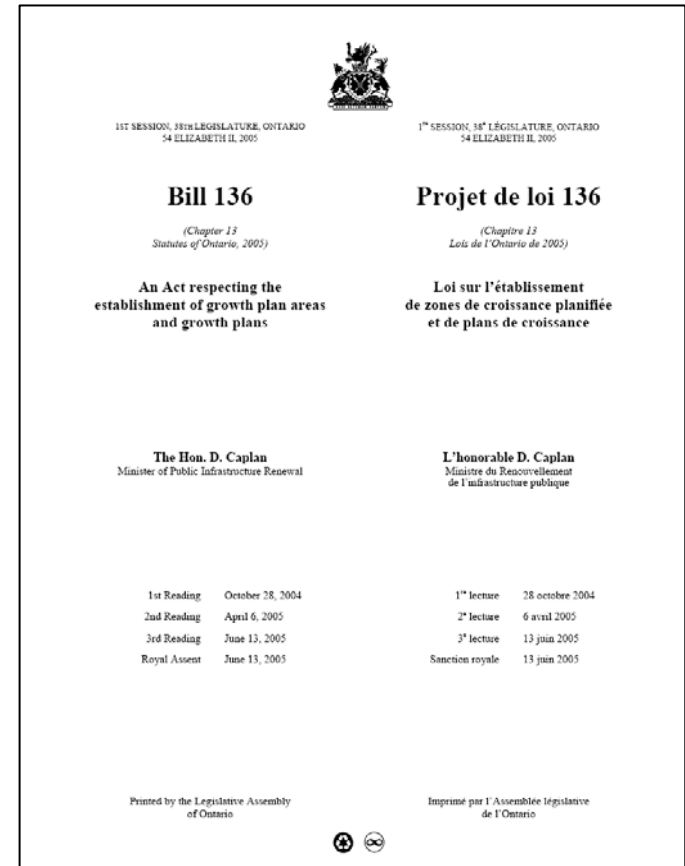
# Developing the Growth Plan

- “Places To Grow” initiative launched in the summer of 2004.
- Series of draft growth plans released, followed by multi-stakeholder workshops, public meetings and one-on-one meetings with key municipal and sectoral leaders.
- Internal coordination across provincial ministries that deal with land use and infrastructure planning.
- Review of over 200 other jurisdictions throughout the world.



# Places to Grow Act, 2005

- “Places To Grow Act” passed by Ontario Legislature in 2005.
  - Province-wide in scope.
  - Enables the Ontario government to develop growth plans for any area of the province.
  - Contains a flexible list of elements that a growth plan may contain.
  - Local planning decisions must conform to the Growth Plan’s policies.
  - Local official plans must be brought into conformity with the Growth Plan within three years of the Growth Plan’s release.



# Growth Plan Objectives

- Create complete communities with more options for living, working, shopping and playing
- Revitalize downtowns to become vibrant centres
- Reduce traffic gridlock
- Providing greater choice in housing types
- Curb urban sprawl and protect farmlands and natural areas



# Coordinate Growth Forecasts

- Allocates population and employment growth forecasts for each of the 21 counties and regions in the Greater Golden Horseshoe.
- Municipalities required to use these forecasts as the basis for their local planning.

	POPULATION				EMPLOYMENT			
	2001	2011	2021	2031	2001	2011	2021	2031
Region of Durham	530	650	810	960	190	260	310	350
Region of York	760	1,050	1,300	1,500	390	590	700	780
City of Toronto	2,590	2,700	2,930	3,080	1,440	1,540	1,600	1,640
Region of Peel	1,030	1,320	1,490	1,640	530	730	820	870
Region of Halton	390	520	650	780	190	280	340	390
City of Hamilton	510	540	550	660	230	230	270	300
<b>GTAAH TOTAL**</b>	<b>5,810</b>	<b>6,860</b>	<b>7,770</b>	<b>8,620</b>	<b>2,950</b>	<b>3,630</b>	<b>4,040</b>	<b>4,330</b>
County of Northumberland	80	87	93	96	29	32	33	33
County of Peterborough*	56	58	144	149	36	17	60	60
City of Peterborough*	74	79			37	41		
City of Kawartha Lakes	72	80	91	100	20	23	25	27
County of Simcoe*	254	294			85	102		
City of Barrie*	108	157	583	667	53	77	230	254
City of Orillia*	30	33			36	17		
County of Dufferin	53	62	71	80	19	22	25	27
County of Wellington*	85	91	269	321	36	41	137	158
City of Guelph*	110	132			63	76		
Region of Waterloo	456	526	623	729	236	282	324	366
County of Brant*	35	39	157	173	36	17	67	71
City of Brantford*	94	102			39	45		
County of Haldimand	46	49	53	56	17	19	19	20
Region of Niagara	427	442	474	511	166	201	209	218
<b>OUTER RING TOTAL**</b>	<b>1,980</b>	<b>2,230</b>	<b>2,560</b>	<b>2,880</b>	<b>870</b>	<b>1,010</b>	<b>1,130</b>	<b>1,240</b>
<b>TOTAL GGH**</b>	<b>7,790</b>	<b>9,090</b>	<b>10,330</b>	<b>11,500</b>	<b>3,810</b>	<b>4,640</b>	<b>5,170</b>	<b>5,560</b>

Source: Henshaw Consulting Ltd., "The Growth Outlook for the Greater Golden Horseshoe", January 2005  
 Note: Numbers rounded off to nearest 10,000 for GTAAH municipalities, GTAAH Total and Outer Ring Total, and to nearest 1,000 for outer ring municipalities.

\* Separate forecasts for these municipalities for 2021 and 2031 will be determined.

\*\* Totals may not add up due to rounding.



## Create “Complete Communities”

- More opportunities for shopping, entertainment, recreation and employment within easy access to people’s homes.
- Street configurations that are pedestrian and transit friendly.
- High-quality public spaces.



# Infill and Redevelopment ... Not Sprawl

- 40% of new residential growth inside the existing built-up area of each upper and single-tier municipality by 2015.
- The Province has delineated a built boundary that marks the built-up area.
- Built boundary will be used to monitor and implement the Growth Plan.
- All municipalities must prepare intensification strategies.



# Revitalize Downtowns

- 25 downtowns identified as urban growth centres:
  - Mixed-use economic centres for surrounding area
  - Pedestrian/transit supportive
  - Focal points for regional services
  - Cultural identity and amenities
  - Key transportation nodes
- Minimum density targets that centres must plan to achieve by 2031.





## Build Better Suburbs

- Future greenfield areas must be built at an average density of 20 people and jobs combined per acre.
- Greenfield development must create complete communities, with development patterns and street configurations that support transit services, walking, biking, parks and a mix of housing and jobs.
- Strict tests and criteria required for expansion of urban areas into rural countryside and natural areas.



# Plan for Employment

- Municipalities will maintain adequate supply of lands providing for a variety of appropriate employment uses.
- Major office or appropriate institutional uses should be located in areas well served by transit.
- Municipalities may permit conversion of lands within employment areas, to non-employment uses, only through a municipal comprehensive review.





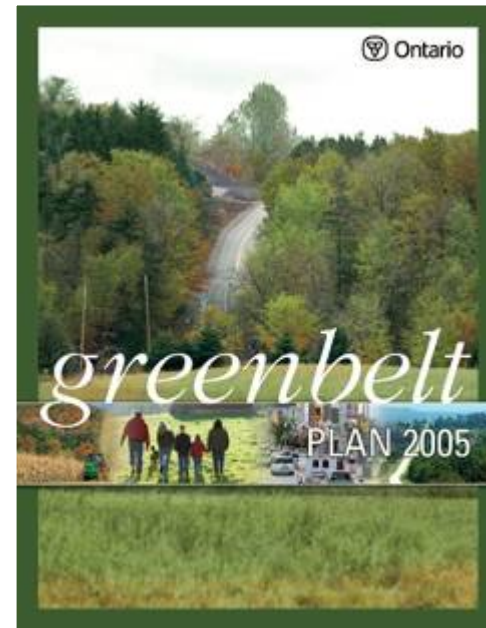
# Increase Transportation Choices

- Transit supportive urban form in all communities.
- Transit is the first investment priority for moving people.
- Community design that supports walking and cycling.
- Highways to be used for moving goods.

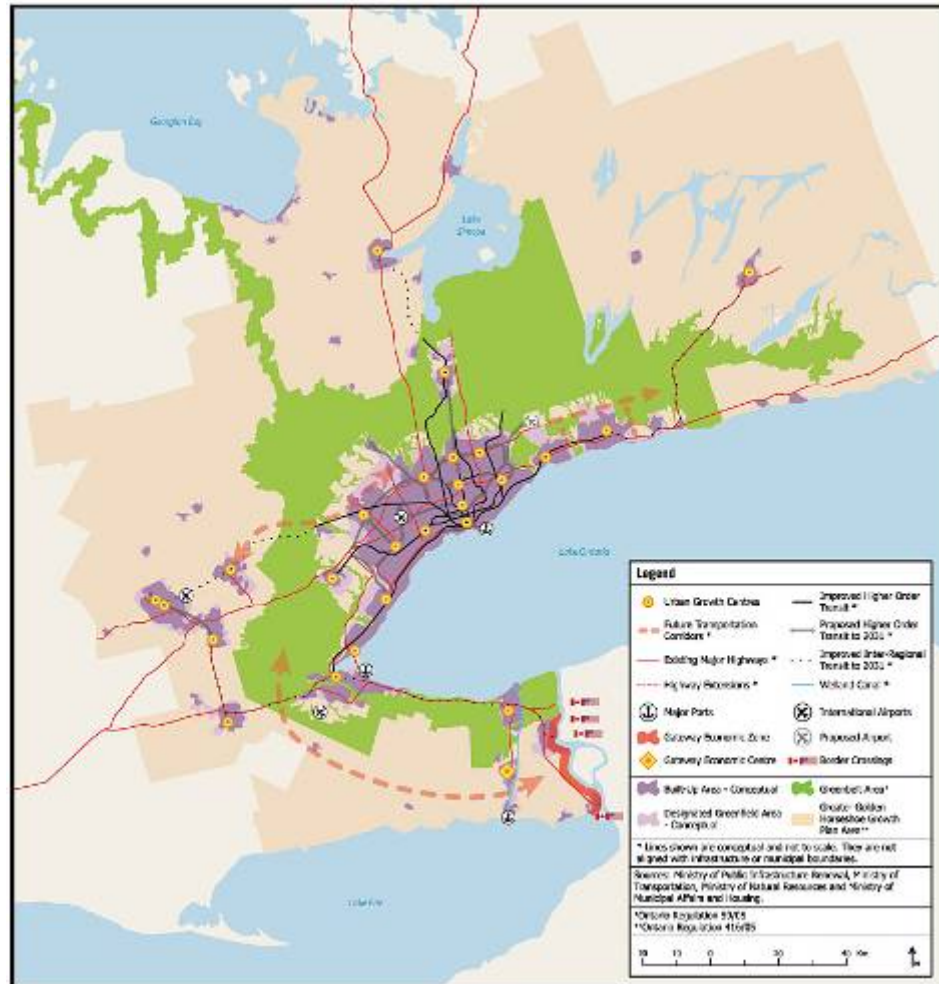


## Protect What is Valuable

- Taken together, policies in the Growth Plan direct development to existing settlement areas and reduce development pressures on important natural areas and agricultural lands.
- 1.8 million acre protected Greenbelt at the heart of the Greater Golden Horseshoe.
- Create a culture of conservation (water, energy, waste).



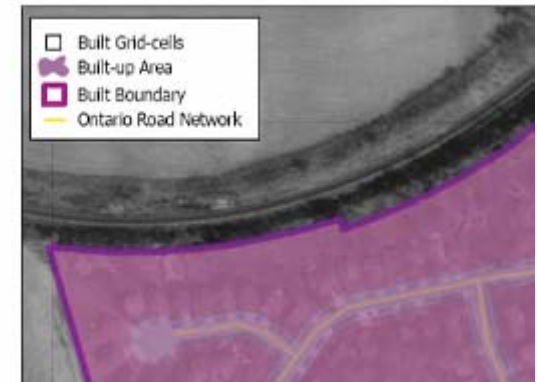
# Growth Plan Concept





# Strong Commitment to Implementation

- The Province is moving forward with implementation of the Growth Plan on a number of fronts:
  - Municipal Conformity
    - Working with the 110 municipalities in the Growth Plan area to ensure official plan conformity by June 2009.
  - Implementation Analysis
  - Supportive Provincial Initiatives
    - Infrastructure Investment and Transportation Planning (Metrolinx.ca)
    - Provincial Real Estate Portfolio
  - Public Engagement



# PLACES TO GROW

BETTER CHOICES. BRIGHTER FUTURE.

Ontario Growth Secretariat

[www.placestogrow.ca](http://www.placestogrow.ca)

