
Columbia Pike Streetcar To Be or Not to Be . . .

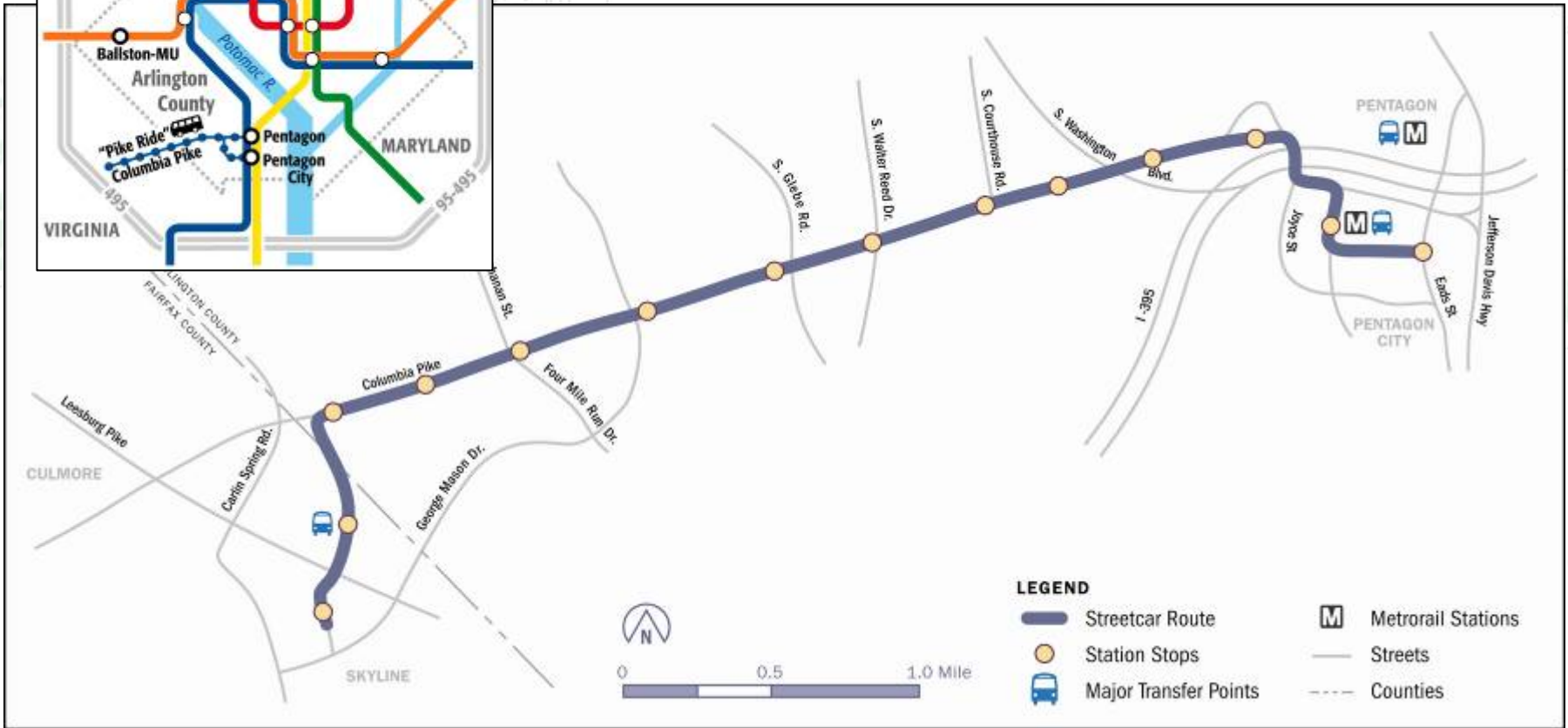
An architectural sketch of a city street scene. A streetcar is traveling down the center of the road. On the left, there is a building with a sign that says 'ARLINGTON CINEMA' and another sign that says 'CINEMA NEW SHOW SHREK 5'. There are trees and people walking on the sidewalk. On the right, there is a streetcar stop with a shelter and more trees and people. The street has lane markings and traffic lights.

RailVolution
October 29, 2008

Arlington Experience

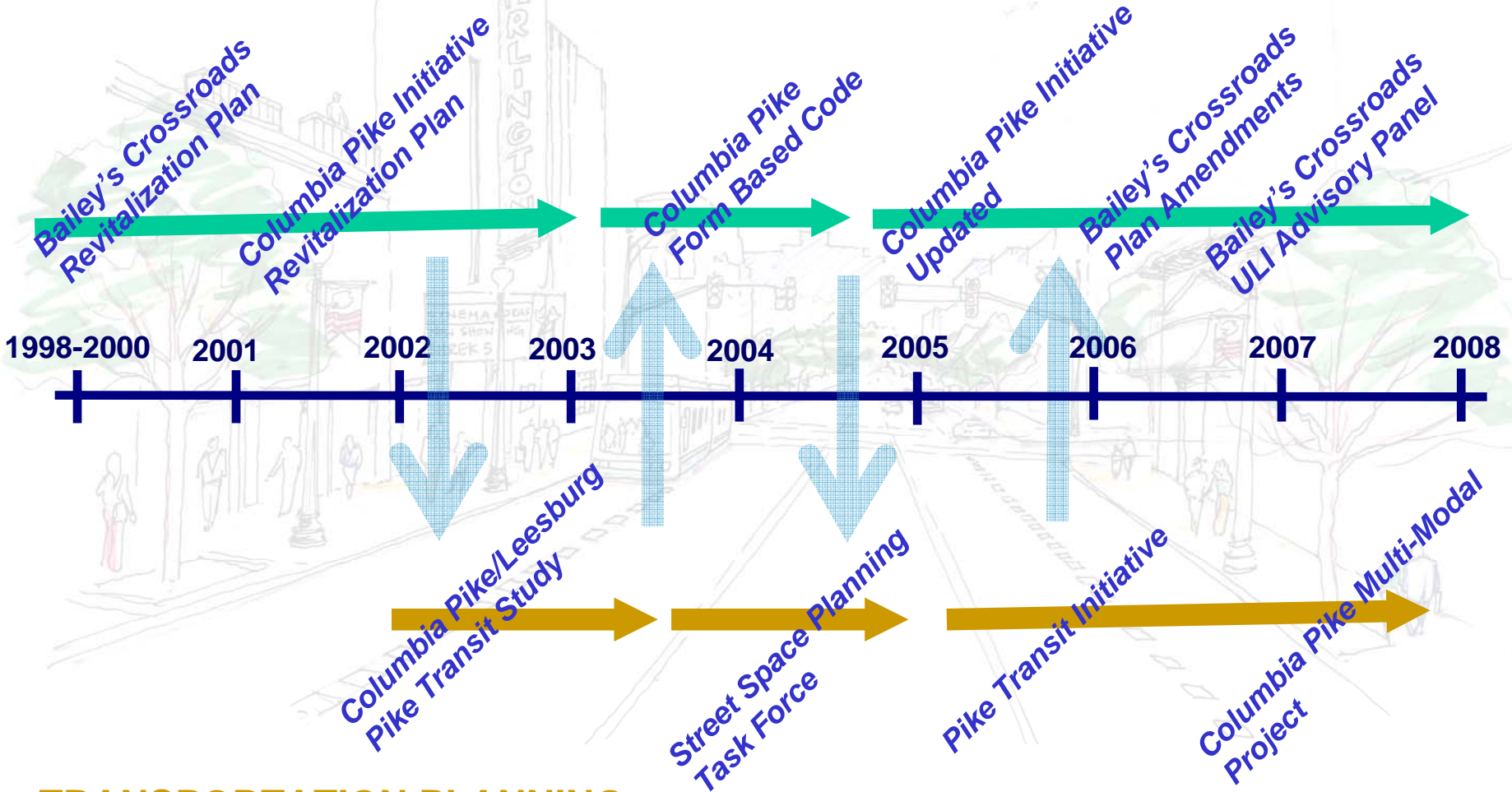
- History of Successful TOD & Transit Use
 - Metrorail corridors - 39% Public Transit Mode Split (Rail & Bus) (2000 census)
 - Average Weekday Ridership
 - Metrorail - 209,257 (June 08)
 - Metrobus – 51,823 (June 08)
 - Arlington Transit (ART) – 5,012 (July 08)

Columbia Pike Streetcar Corridor



Coordinated Planning for Columbia Pike

LAND USE PLANNING



TRANSPORTATION PLANNING



Transit Development on the Pike



Incremental progress towards a higher capacity corridor

Implement PikeRide Service

- Implement Signal Priority
- Design and Construct SuperStops
- Implement Real-Time Passenger Information

Columbia Pike Streetcar Operation

2004

2005

2006

2007

2008

2009

2010

2011

2012

Growth Along the Pike

Growth Projections	2000	2030
Population	112,595	141,334 25.5%
Employment	112,839	155,974 38.2%

Recently Completed:

- **Townhouses at Alcova Row**
 - 22 townhouses

Under Construction:

- **Halstead at Arlington**
 - 269 condominium units
 - 42,000 sq. ft. retail
- **Columbia Village**
 - 10-story condominium
 - 235 units
 - 7,500 sq. ft. retail
- **Siena Park**
 - 188 apartments
 - 32,000 sq. ft. retail
 - 14,000 sq. ft. office



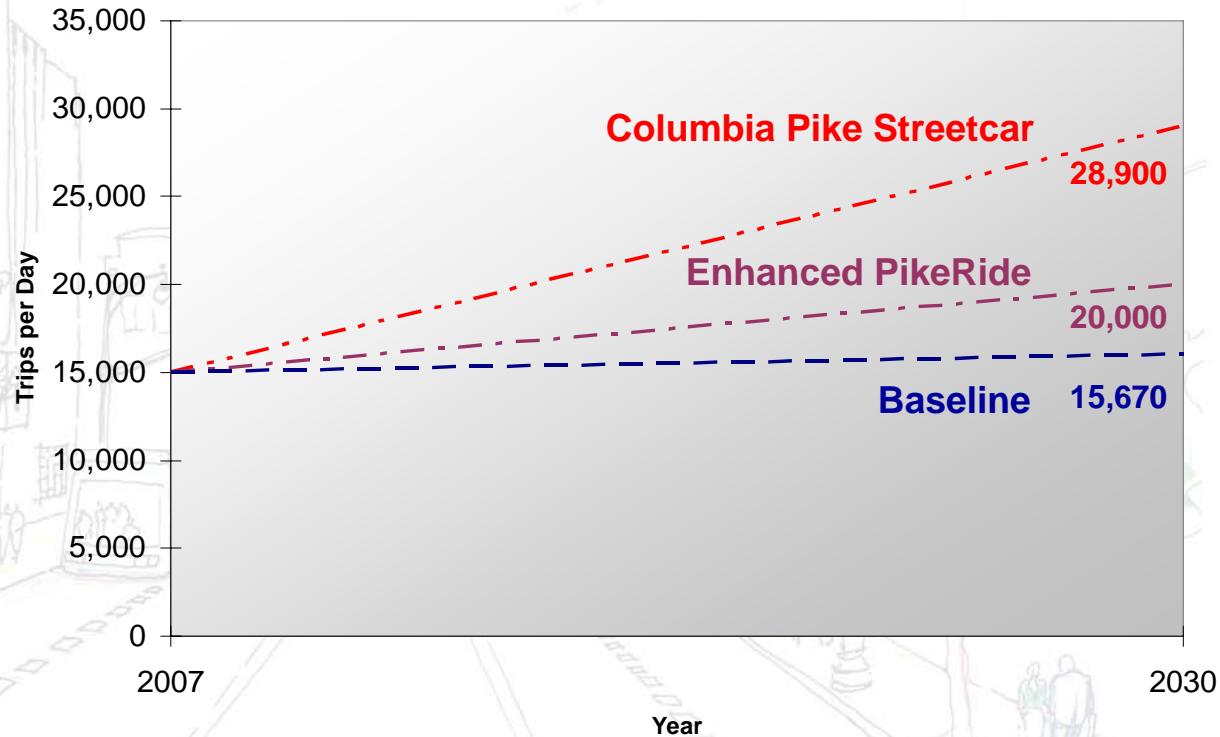
Approved:

- **Penrose Square**
 - New 61,000 sq. ft. grocery store
 - 36,000 sq. ft. additional retail
 - 299 apartments

Need for Enhanced Transit

- Increase capacity within and through the corridor
- Improve mobility and access to jobs and services
- Support economic development plans

Projected Ridership Growth by Mode



Outstanding Issues

- Coordination with Federal & State Projects within Corridor
- Project Funding
 - Recent Plan of Local, Regional and State Funding now in jeopardy
 - To Be or Not To Be . . . A Small Start
- Project Delivery & Operations
 - DB, DBOM, PPP

Lessons Learned

- Benefits of coordinated land use and transportation planning
- Beware of Baseline Creep
 - Incremental Improvements may change baseline
- Maintain Flexibility



Thank You

For more information visit
www.piketransit.com