

# Portland North Small Starts Alternatives Analysis

RailVolution  
October 29, 2008

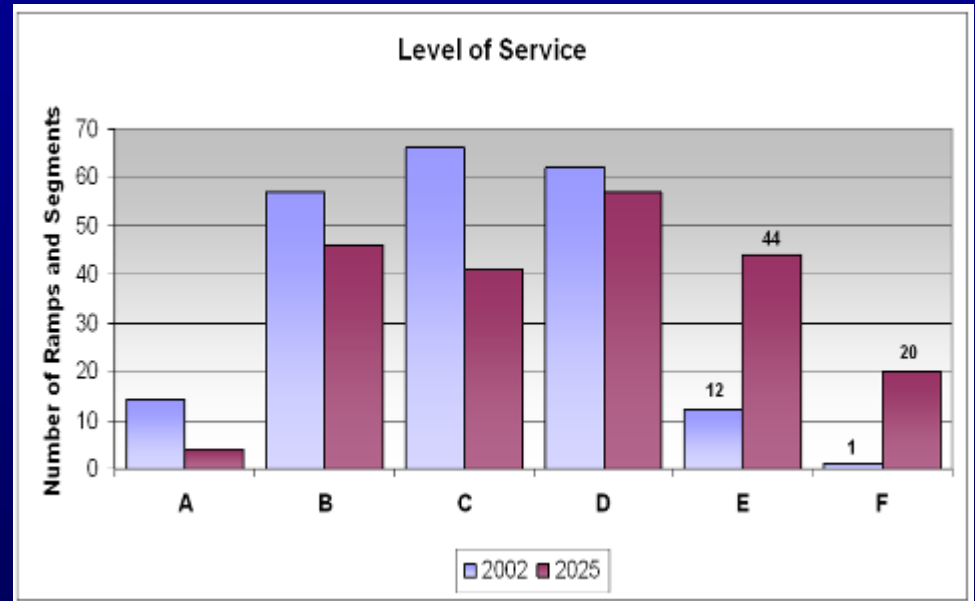
# Existing Transportation Network

- I-95 to Gray , New Gloucester, Auburn, and Lewiston.
- I-295 to Yarmouth, Freeport, and Brunswick.
- Limited transit options for commuters north of Portland.
- Intercity buses do not operate on commuter schedules.
- Amtrak's Downeaster service between Portland and Boston.
- Maine DOT Park-n-Ride Lots - no bus service to lots.



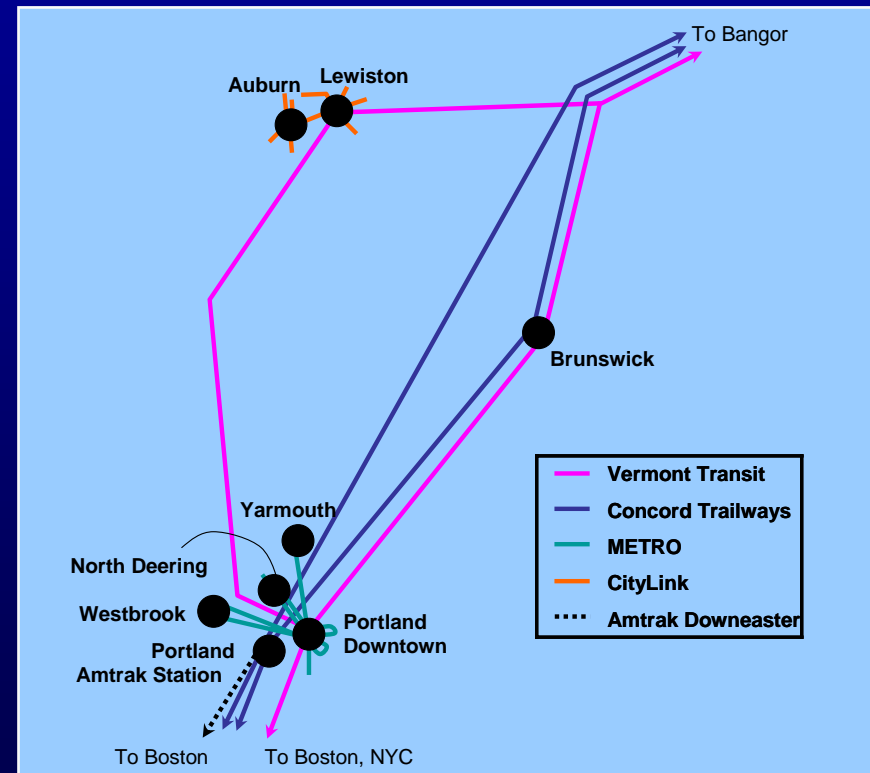
# Highway Congestion

- Existing ADT on I-295 between Exits 3 and 9 exceeds 30,000 in each direction.
- Heaviest congestion on bridge crossing Back Cove at 45,000 vehicles per day.
- ADT on I-295 north of Portland ranges from 45,000 to 50,000.
- VMT to increase 25% by 2025.
- VHT to increase 33% by 2025.
- Traffic volumes at Back Cove projected to increase by 20% by 2025.
- Severe degradation in LOS projected for 2025 between Portland and Yarmouth.



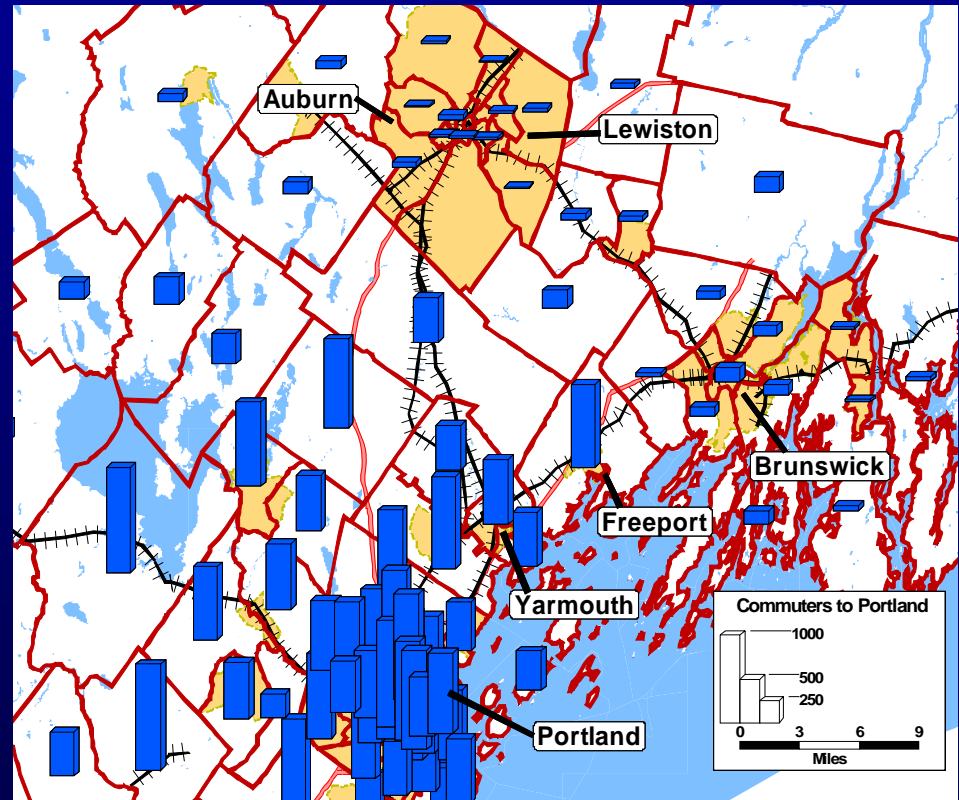
# Transit Services

- Limited transit options for commuters north of Portland
  - Metro
  - City Link
  - Go Maine
- Intercity buses do not operate on commuter schedules
  - Concord Trailways
  - Vermont Transit
- Amtrak's Downeaster service between Portland and Boston

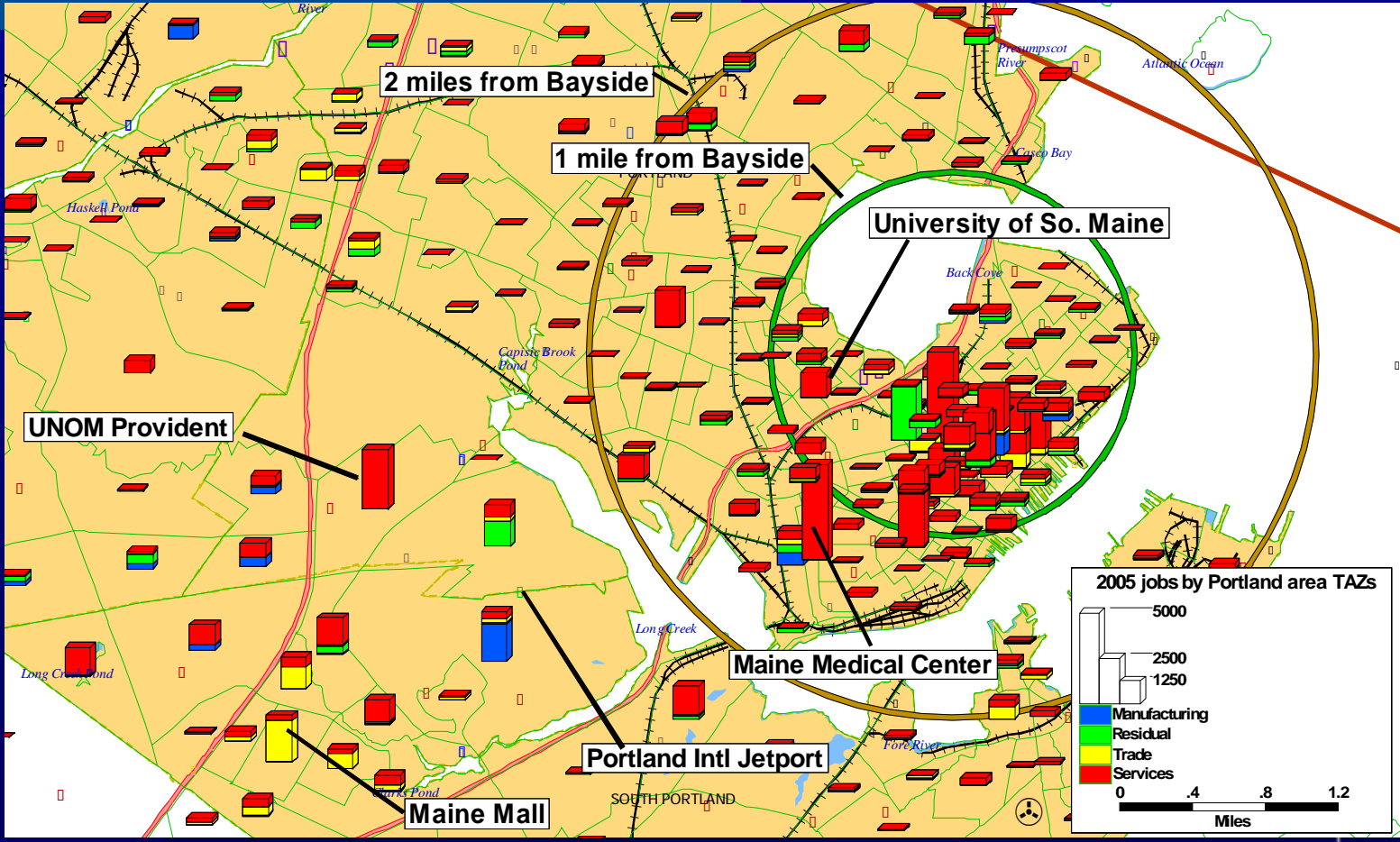


# Commuting Characteristics

- 30,000 in study area commute to Portland
- High concentrations of commuters from Freeport, Yarmouth, Cumberland and Gray
- 79% – 85 % commute via auto alone
- 13% carpool
- Population/employment growth of 20% expected

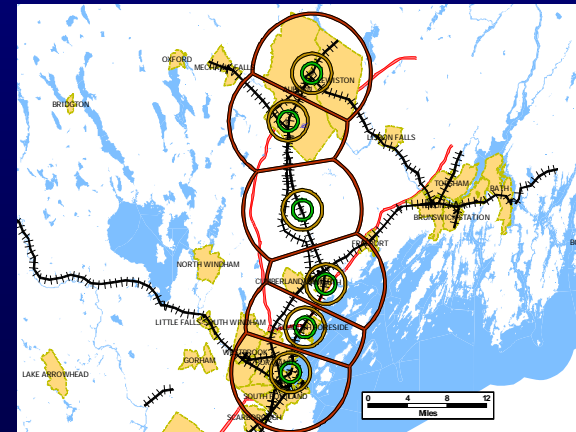
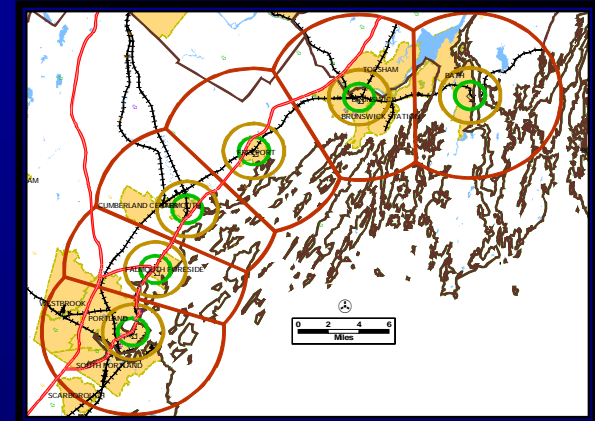


# 2006 Jobs by Portland TAZ



# Journey to Work

- Brunswick and Auburn commuters to Portland are similar
- Brunswick line offers more potential for inter community commutes
- Auburn line offers more potential employment in 2025



# Alternatives Overview (Rail)

- Auburn

- SL&A

- Brunswick

- Pan Am
- SL&A





# Alternatives Overview (Bus)

- Express Bus

- Travel along I-95 and I-295
- Service Park and Ride Lots
- Terminate at METRO Hub



# Lessons Learned

---

- Refine Corridor
- Focus on Land Use and Economic Benefits
- Arm yourself with relevant case studies
- Involve FTA early