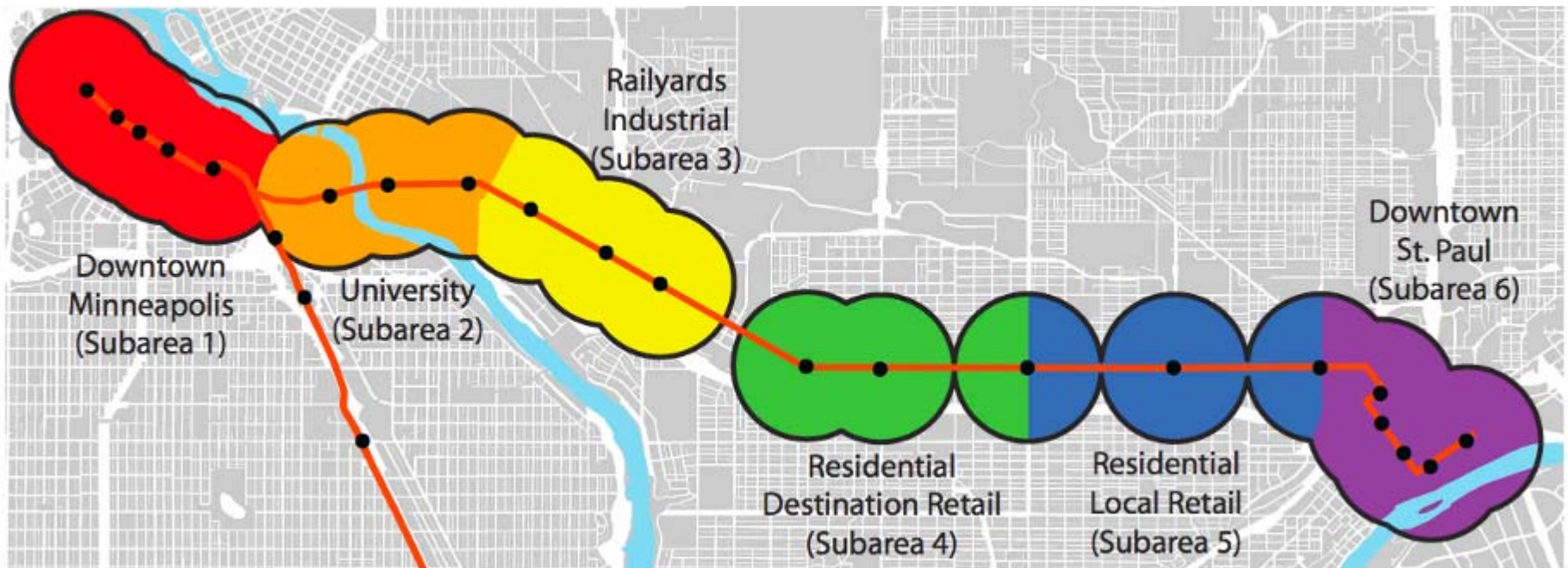


TOD At The Corridor Level

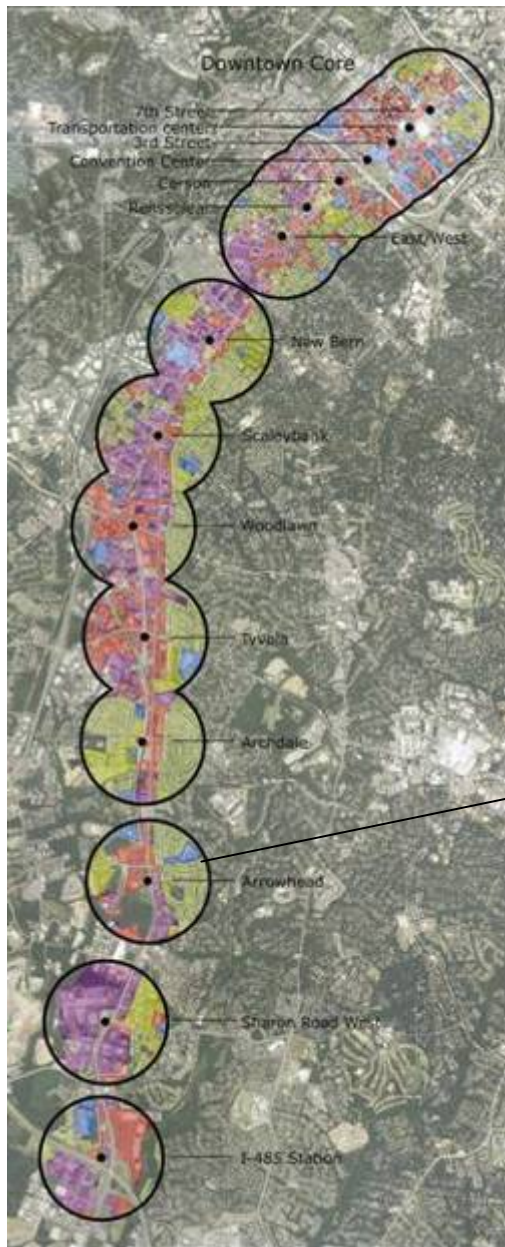
Rail~Volution, October 30, 2009

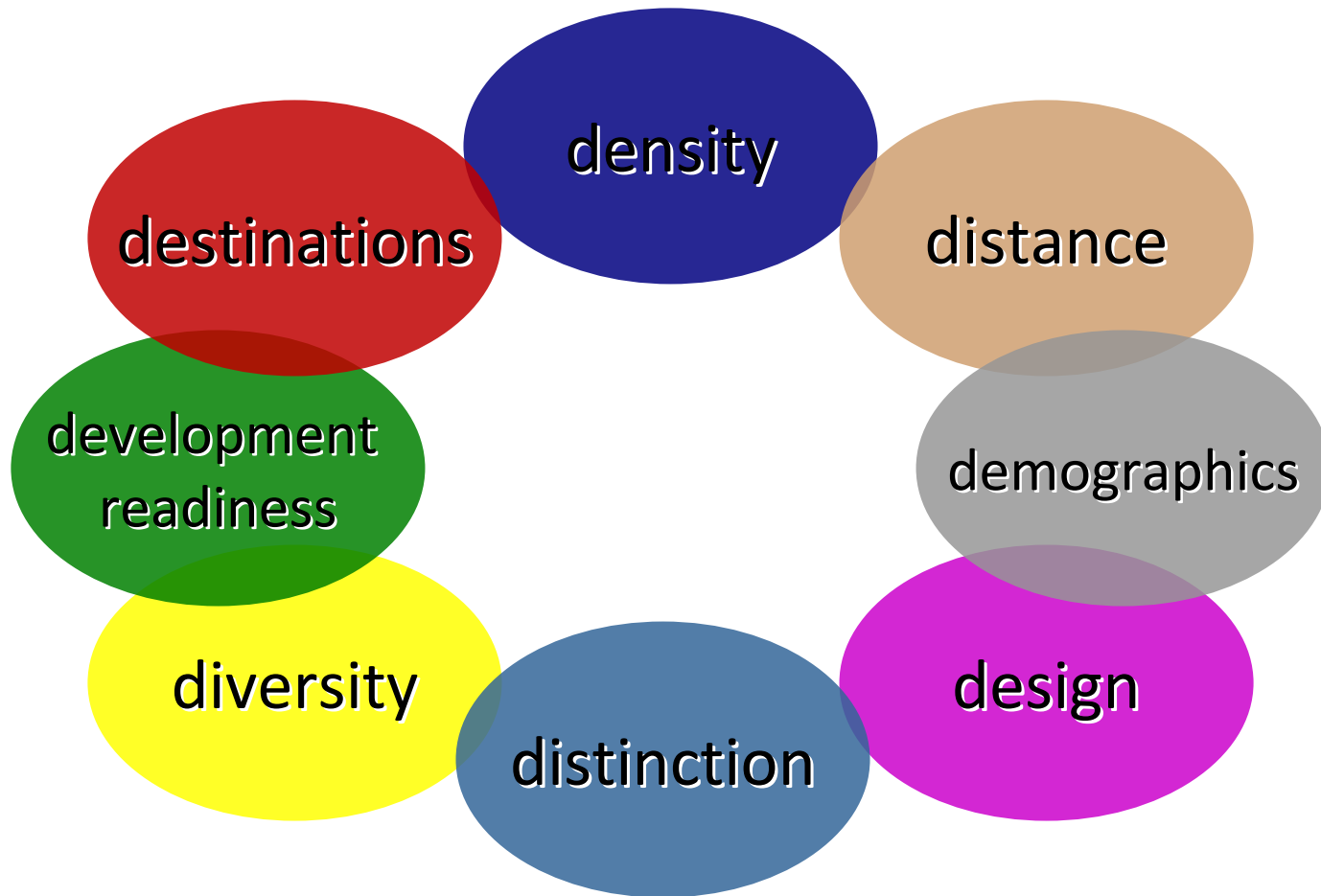


TOD = A Walkable Neighborhood



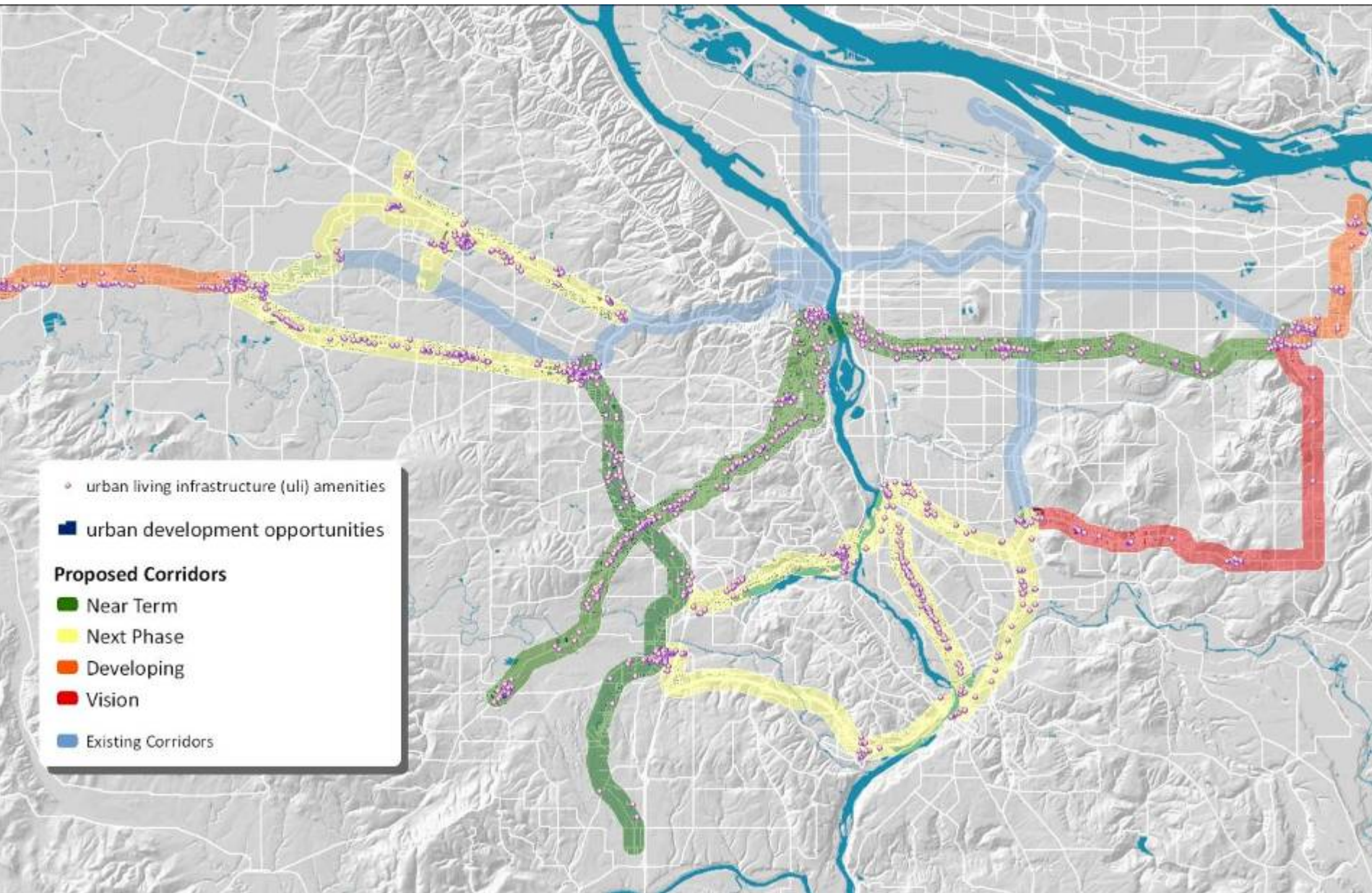
Moving From the District to the Corridor





expanding the “holy trinity” of TOD

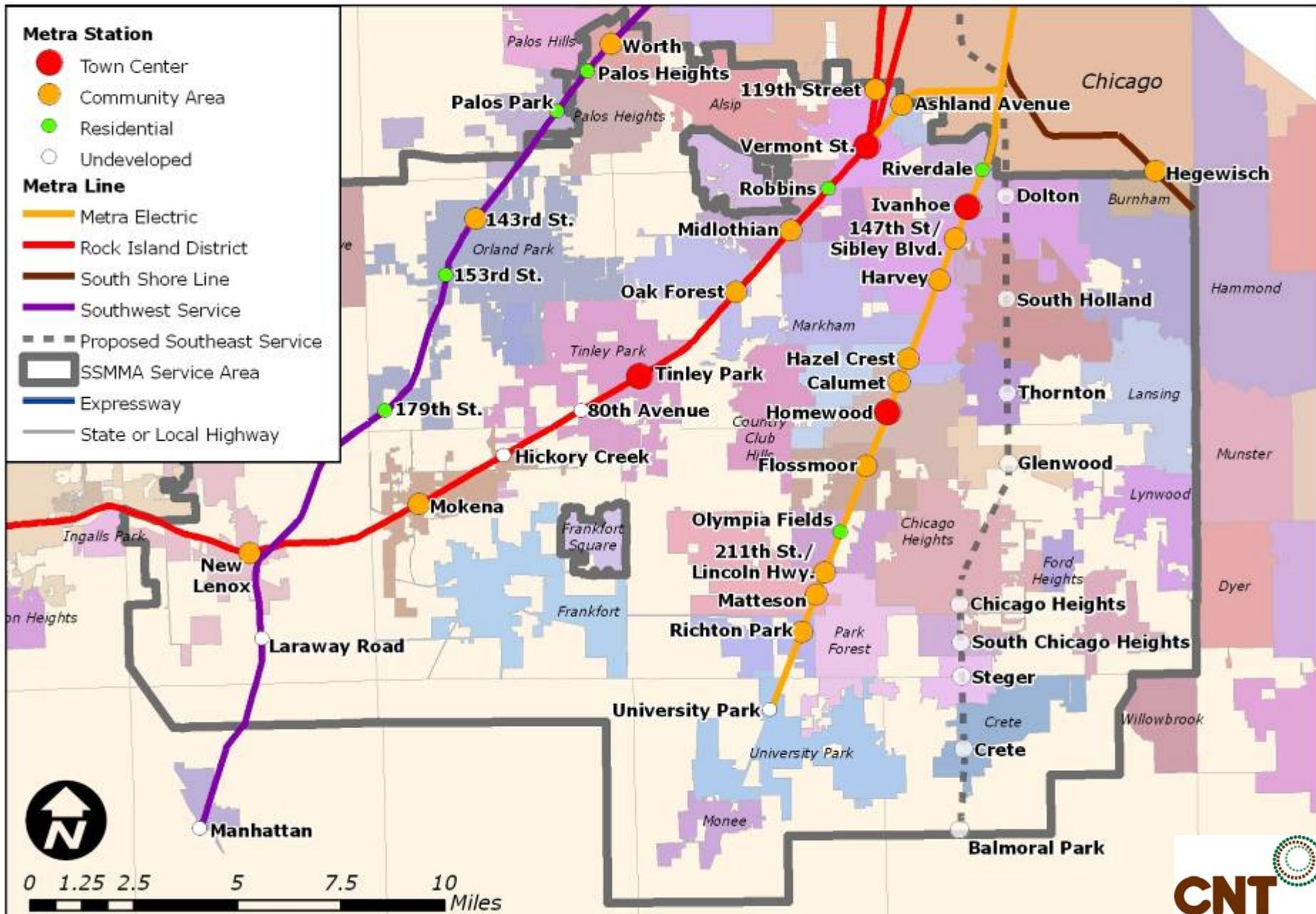
proposed corridors



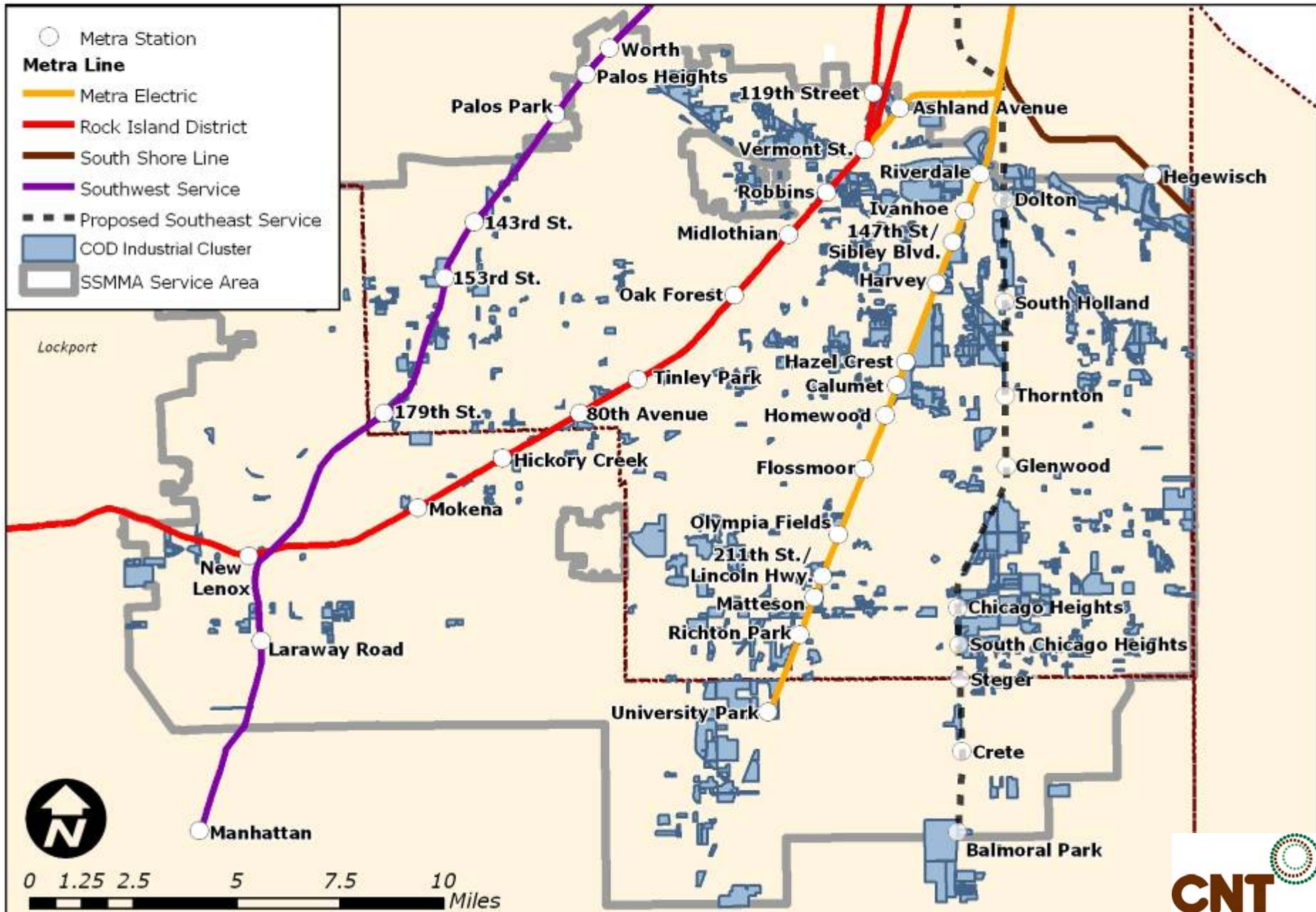
station targeting



TOD Corridors Typology Overview



TOD Corridors and Cargo Oriented Development



Grand Boulevard Initiative: *Challenges, Opportunities and Accomplishments*

Challenges:

- Relatively low density land uses along corridor; small parcels; single-family neighborhoods adjacent (in many places)
- Many different jurisdictions involved (19 cities, 2 counties) and roadway is owned by state agency - Caltrans
- Generally designed for autos and unfriendly for pedestrians and cyclists

Opportunities:

- Substantial amount of redevelopable land
- Good transit infrastructure in place (Caltrain, local/express buses on corridor, BART and LRT near corridor); Major transit investments planned (BART extension, California High-Speed Rail)
- Opportunity for BRT service with wide ROW (many places) and pattern of nodes

Selected Accomplishments:

- Development of *Guiding Principles* and adoption by most jurisdictions
- Creation of a GBI Website, Google Earth Project Map, and Wiki collaboration tool
- Nearing completion of a study that includes land use & transit scenario modeling
- Considerable public and private investment in corridor





Dudley Village is a \$15.5 million project already under development by DBEDC.



EXISTING Underutilized buildings and vacant land near the station offer development opportunities.

POTENTIAL A vibrant, pedestrian-friendly mixed-use village clustered around the improved Uphams Corner station.

Dudley Village mixed-use project with 50 rental units and four commercial parcels and new green spaces.

Streetscape improvements, landscaping and amenities will create an attractive walk to the train station.

Townhouse and apartments to fit the scale of neighborhood three-family buildings

