



Rebuilding Neighborhoods One Block At A Time



Creating Successful Projects: Lessons from the Neighborhoods





LANI Background

- Established in 1994 to stimulate community-driven neighborhood revitalization
- Community engagement
- Constructed \$20 million in neighborhood improvements
- Leveraged over \$30 million in additional public, private and in-kind improvements



Transit Enhancements

North Hollywood Transit Arts Park



Before



After



Gateway Monuments

Jefferson Park Neighborhood



Before



After



Traffic Medians

Fairfax Village Median



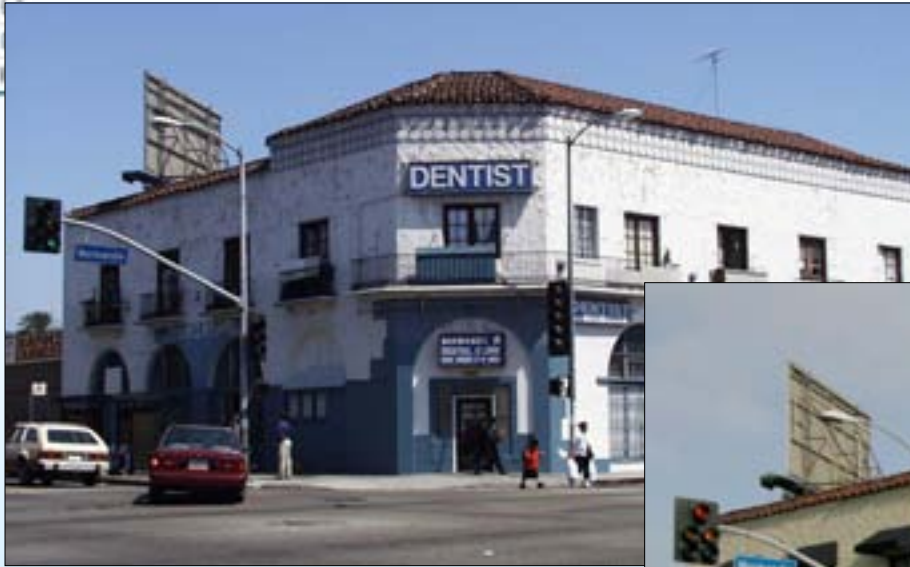
Before



After



Façade Improvements



Before

Historic West Adams District



After



Urban Greening

Sun Valley Pocket Park



Before



After



Catalytic Effects

North Hollywood Neighborhood



Before



After



Project Process and Tools





Crenshaw Corridor



- Collaborative community planning process
- Develop a comprehensive West Boulevard Station Area Community Linkages/Revitalization Plan
- Define multimodal linkages around the proposed West Boulevard Station
- Ensure compatibility with general vision of development for the area
- Enhance access to the Crenshaw/LAX Transit Corridor Project Area to promote revitalization and economic growth



Project Process and Tools

- Coordination with other project teams working in the area
- Establishment of Steering Committee
- Selection of Design Team by Steering Committee
- Walking Tour of Project Area
- Series of Steering Committee & Public Meetings
- Plan/Design Development



Project Process and Tools

- **Establishment of Steering Committee**
 - 15 members
 - Representative of a variety of stakeholder groups
 - Assisted by a technical advisory group



West Adams Steering Committee



Project Process and Tools

- **Selection of Design Team**
 - Request for Qualifications (RFQ) Process
 - Chosen by the Steering Committee



Designer selection interview session



Project Process and Tools

- Walking Tour of Project Area



Steering Committee, Project Team and Other Community Members



Project Process and Tools

- **Series of Steering Committee & Public Meetings**
 - Take place at regular and critical points throughout the project





Project Process and Tools

- **Development of the Plan***
 - Define constraints/opportunities
 - Define project goals
 - Identify planned uses/elements
 - Develop conceptual sketches of project area or direct to design development

**Plan development occurs throughout the lifetime of the project with ongoing expansion and refinement based on community and technical committee feedback*



Project Outcomes

- Community consensus
- Establishment of a spin-off neighborhood watch/community group
- Secured funding for additional design and construction if applicable
- Development of maintenance plan
- Project implementation for fully funded projects



L · A · N · I

LOS ANGELES

NEIGHBORHOOD

INITIATIVE

Los Angeles Neighborhood Initiative

900 Wilshire Blvd., Suite 1128
Los Angeles, CA 90017

Rebecca Draper
*Director of Neighborhood
Improvement Projects*

213-627-1822

www.lani.org

Rebuilding Neighborhoods One Block At A Time