

Bike-Transit Centers and Biketopia

Rail~Volution Session
BOD: The New TOD?



October 20, 2010



Bikestation is a division of Mobis Transportation

Overview



- Plan, develop and operate sustainable “First/Last Mile” transit solutions
- Work with municipalities, transit agencies, developers, and corporate and university campuses
- High value add bicyclist services (up to 65% previously driving)
- Secure, 24/7 access bike parking

Selected Clients



“Bikestation helped us understand and create a bike-transit center at Union Station that will be a huge boost to cycling in DC. Because they plan and operate many such facilities, they were able to offer us first-hand recommendations throughout the process that helped move this project along in a highly complex environment.”

James R. Sebastian
District Department of Transportation

- City of Long Beach, CA
- Washington DC Department of Transportation (DDOT)
- Salt Lake City
- Guangzhou, China
- City of Santa Monica
- Mexico City
- Los Angeles County Metro
- City of Santa Barbara
- Puget Sound Regional Council
- King County Metro
- City of Fort Collins
- City of Cambridge
- City of Louisville
- City of Pittsburgh
- Bay Area Rapid Transit
- City of Palo Alto
- City of Covina
- City of Claremont
- City of Dayton
- City of Denver
- Utah Transit Authority

Why Bike-Transit Centers as part of BOD?

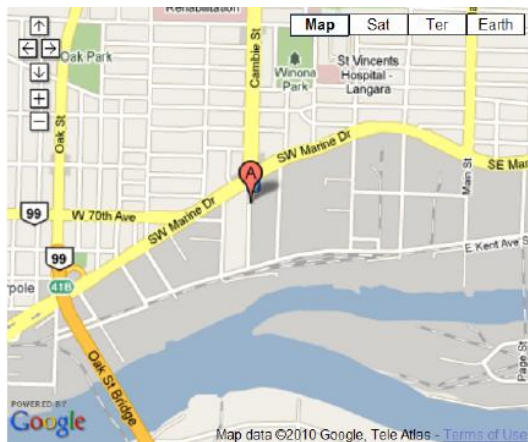
Why Developers and Cities are Interested



- **Generate higher ROI** (neg. reductions in car parking, more leasable space, competitive advantage, etc.)
- **Fits in with city's Long Range Plan** (active lifestyles, healthier population, transportation options, increasing density, air quality requirements)
- **Attract and retain more customers, employees, tenants**
- **Mitigate traffic and parking congestion**
- **Reduce bicycle theft and promote convenience**
- **Get the most out of transportation investments**
- **Create economic benefit to local businesses by displacing long trips**

Case Study: Marine Gateway, Vancouver

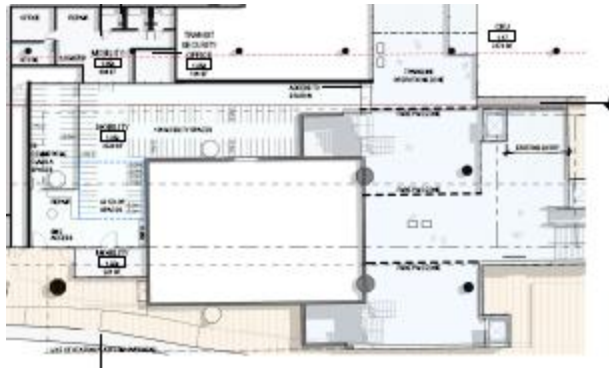
by PCI Developments



- Marine Drive SkyTrain Station (new Canada line, built for 2010 Winter Olympics)
- 400 dwelling units
- 273,200 sq. ft of office space
- 202,000 sq. ft of commercial retail space
- 20,100 sq. ft. for restaurants
- 46,500 sq. ft theatre
- Medical space of 20,400
- 3,900 sq. ft mobility centre (bike parking)

Case Study: PCI Developments, Vancouver BC

Initiated Spring 2010



Services:

- 232 Bike Parking Spaces (24/7 membership based and valet)
- Exterior short-term bike parking
- Retail/Repair/Rentals
- Change Rooms
- W/C
- 48 Lockers
- Office
- Bike/Transit Information

Case Study: Marine Gateway, Vancouver BC

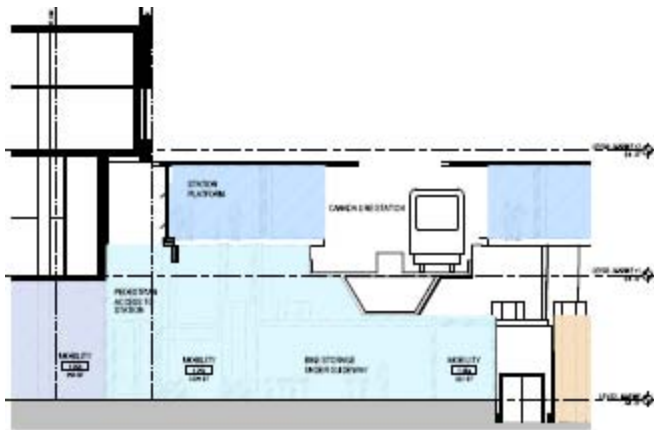
by PCI Developments



- Est. 26,000 person trips (4,500 to 6,000 transit trips) daily
- Code requirements driving some bike parking
- Above and beyond to:
 - provide amenity for public and customers/tenants/employees
 - negotiate additional leasable space
 - be a sustainability leader in the development world

Case Study: PCI Developments, Vancouver BC

Initiated Spring 2010



- CapEx funding: PCI
- OpEx funding: PCI and service fees
- Deeded to the City after x years with endowment
- Land: TransLink ROW (under raised guideway)

City of Covina, CA

Goal: Attract transit riders, attract developers, connect downtown core



- 3rd busiest Metrolink station
- Serves 15 cities with 204,000 weekday commuters annually
- Modular, expandable and portable
- 1 car parking space=30 bicycles
- Expanding network or interim solution



Andrea White-Kjoss

CEO

T: 562-733-0106

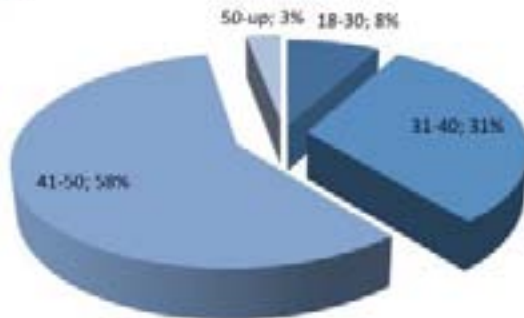
awhite-kjoss@bikestation.com



Demographics

Santa Barbara, California Facility

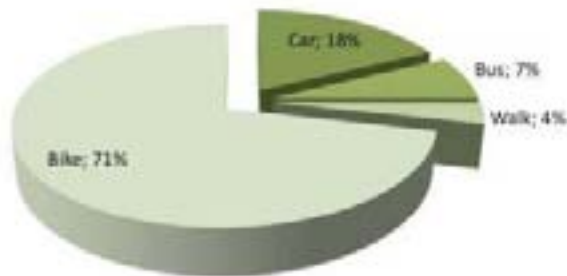
AGE



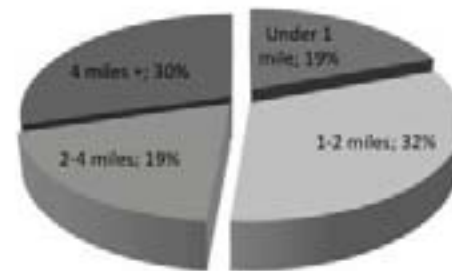
Frequency of Use



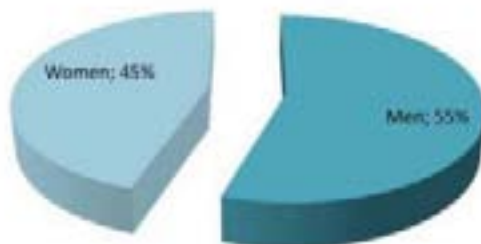
Modes of Transportation



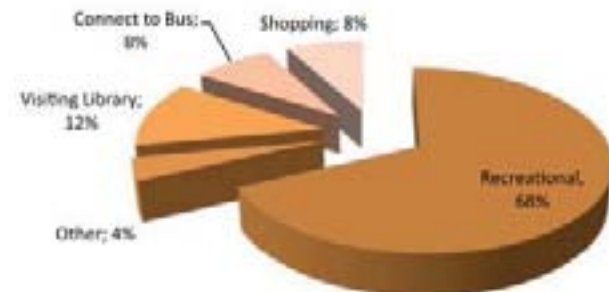
Distance Traveled to Station



Male / Female of Usership



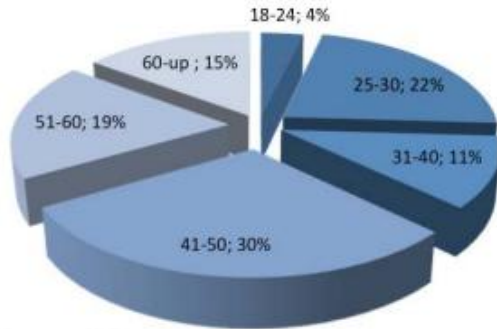
Destination from Station



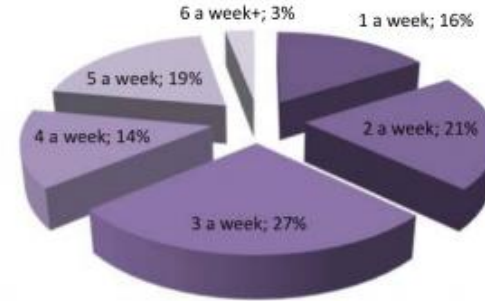
Demographics

Long Beach, California Facility

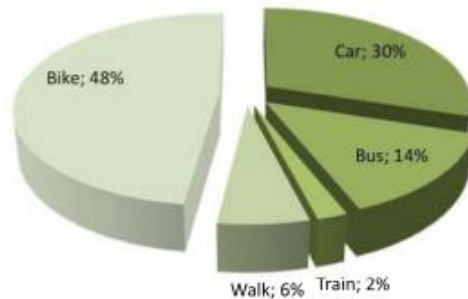
AGE



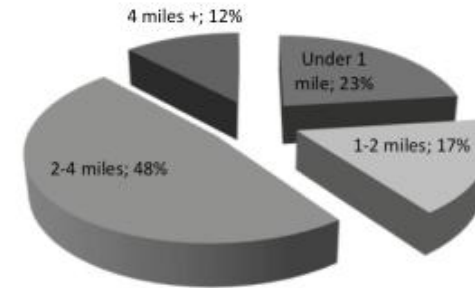
Frequency of Use



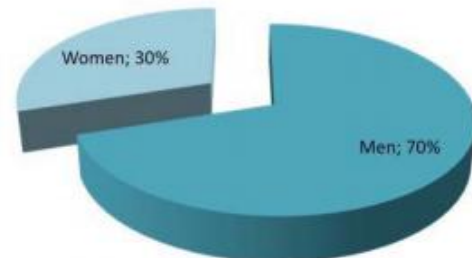
Modes of Transportation



Distance Traveled to Station



Male / Female of Usership



Destination from Station

