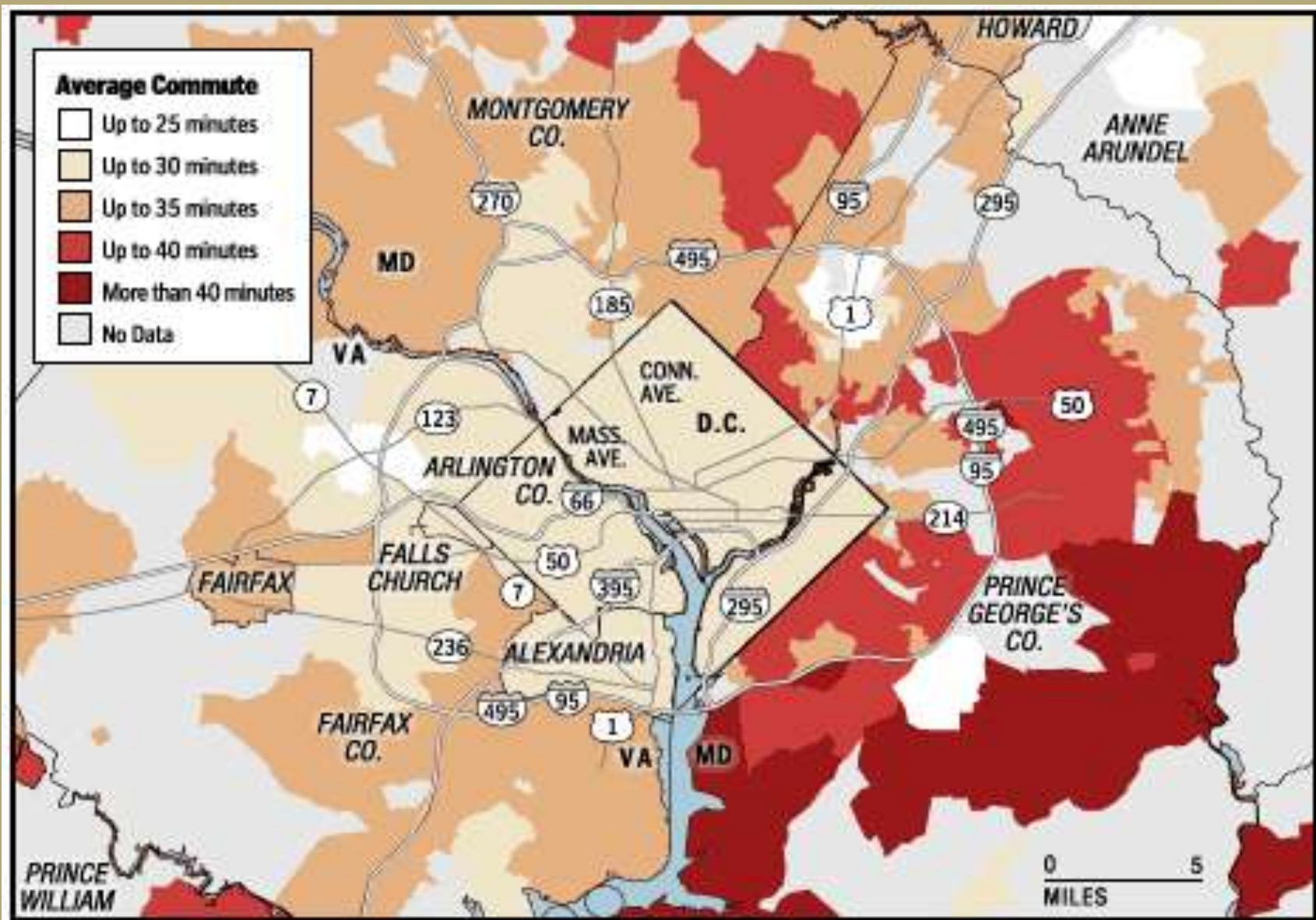


Prince George's County - Sixth-Longest Commute in the Nation



“For Relief, Region Told to Go East”

Washington Post, October 1, 2009

Outer

Inn



Address Job Sprawl

Science City ●

● **BRAC**

← **Verizon, AOL**

- BRAC**
- Corporate**
- Hospitals**
- Universities**
- Museums**

● **Northrop**

● **BRAC**

● **BRAC**



Add Transit – Mixed-Use – Affordable Housing



Homes

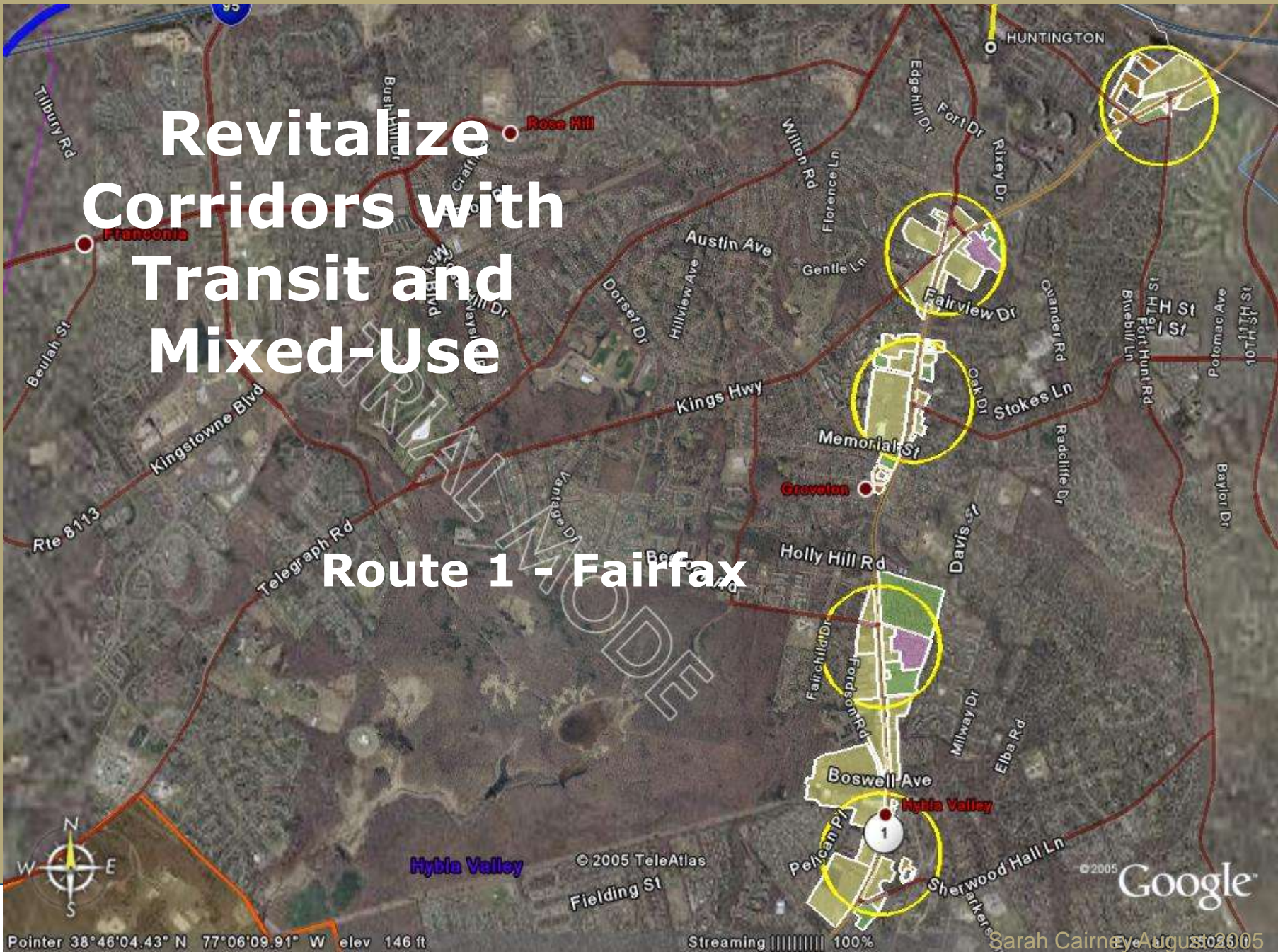
Offices

SILV

Homes

Revitalize Corridors with Transit and Mixed-Use

Route 1 - Fairfax



Pointer 38°46'04.43" N 77°06'09.91" W elev 146 ft

Streaming 100%

© 2005 TeleAtlas © 2005 Google Sarah Cairney August 2005