



SOUTHWEST LRT
community works

green means go.

connecting people to jobs, housing, shopping, and fun

Railvolution Conference

Los Angeles, CA
October 2012



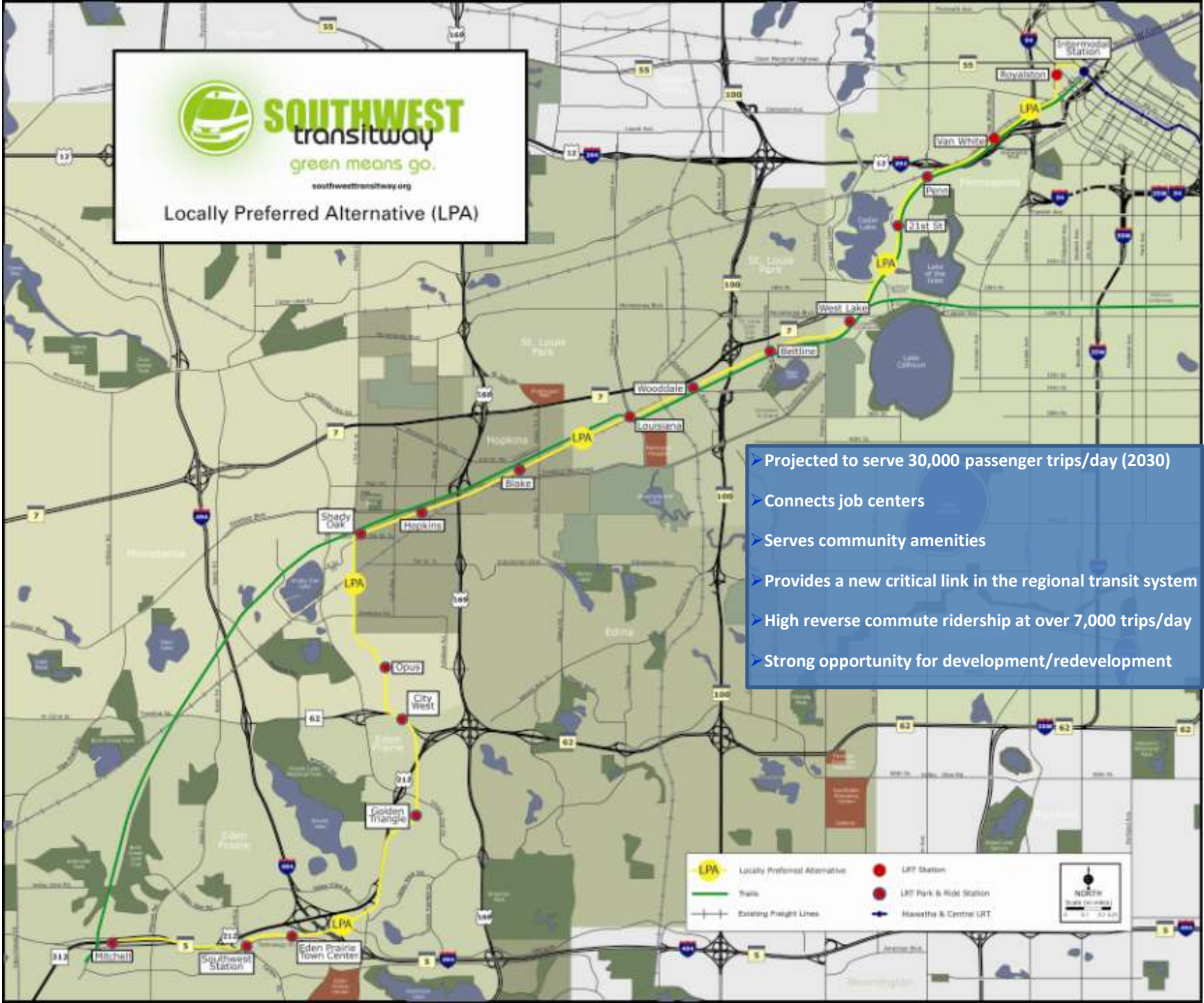
SOUTHWEST
transitway
green means go.

southwesttransitway.org

Locally Preferred Alternative (LPA)

- Projected to serve 30,000 passenger trips/day (2030)
- Connects job centers
- Serves community amenities
- Provides a new critical link in the regional transit system
- High reverse commute ridership at over 7,000 trips/day
- Strong opportunity for development/redevelopment

	Locally Preferred Alternative		LRT Station
	Trails		LRT Park & Ride Station
	Existing Freight Lines		Metrolink & Central LRT





SOUTHWEST LRT
community works

green means go.

connecting people to jobs, housing, shopping, and fun.

Corridors of Opportunity (CoO) Vision

Transitway corridors will guide our region's growth, vitality, and competitiveness. Development along transitways will create distinctive places and strengthen local assets while increasing ridership and expanding access to jobs, affordable housing, and essential services for residents of all incomes and backgrounds.

Southwest LRT will become a model for the nation for the early integration of LRT engineering and land use planning so that the region's investments benefit residents, businesses, and communities, providing opportunities for all.





SOUTHWEST LRT
community works

green means go.

connecting people to jobs, housing, shopping, and fun.

Hennepin Community Works was created in the mid 1990s

Mission

To enhance how the communities of Hennepin County work together to create good jobs, provide access to employment, and build the long term value of communities by investing in infrastructure, public works, parks, and the natural environment and by improving the existing implementation systems.

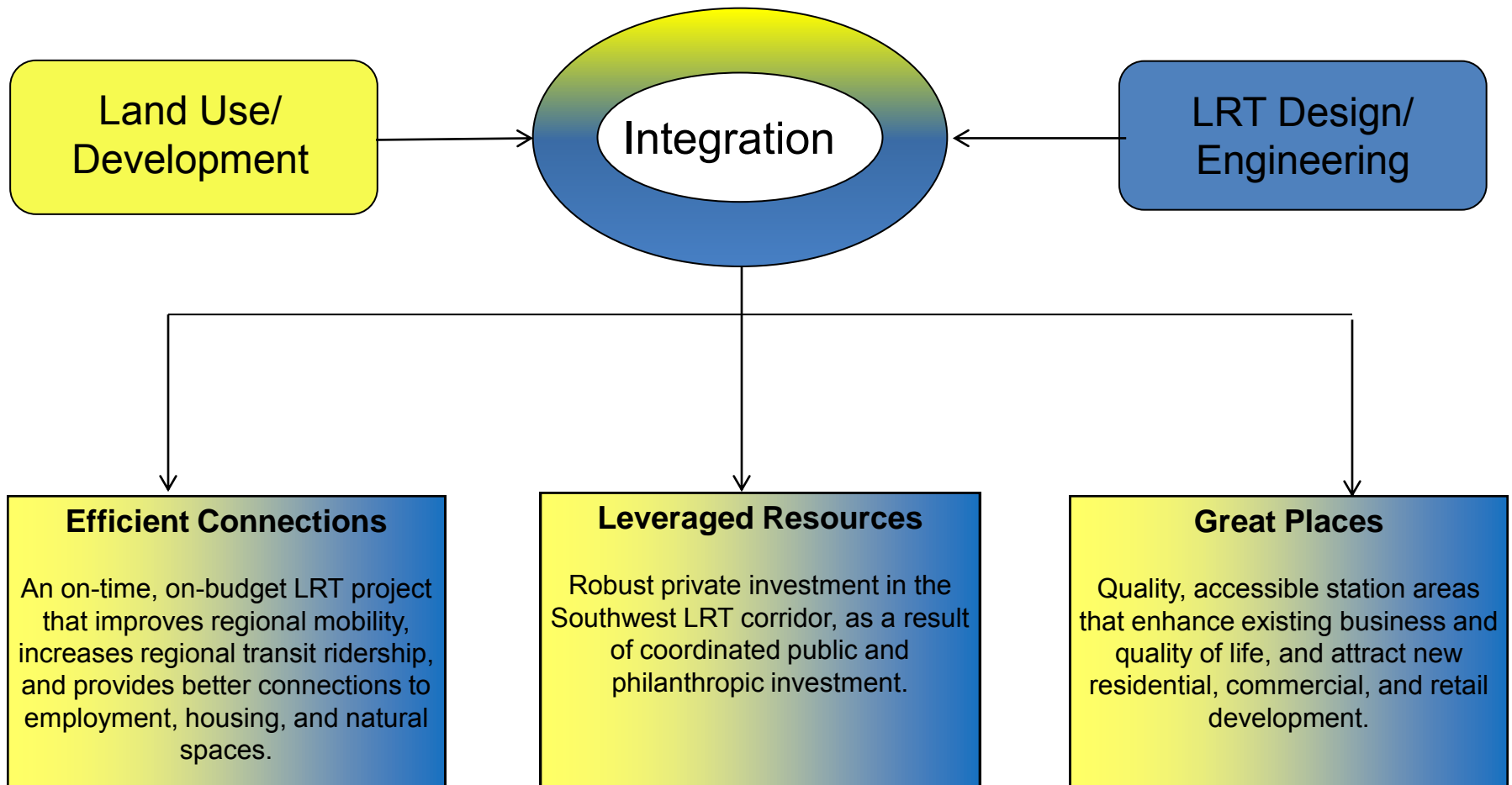
Principles

- Stimulate employment development
- Build bridges for effective planning and implementation
- Maintain and improve natural systems
- Strengthen communities through connections
- Enhance the tax base





Land Use/Development & LRT Design Integration



Major Integration **Accomplishments**

- Adopted a Shared Vision & Goal Statement
- Implemented Systemic Organizational Change
- Conducted Cross Discipline Educational Activities
- Established Station Area Vision/Typologies





SOUTHWEST LRT community works

green means go.

connecting people to jobs, housing, shopping, and fun.

Vision:

connecting people to jobs, housing, shopping, and fun

Economic competitiveness and job growth

Promoting opportunities for business and employment growth

Housing choices

Positioning the Southwest LRT communities as a place for all to live

Quality neighborhoods

Creating unique, vibrant, safe, beautiful, and walkable station areas

Critical connections

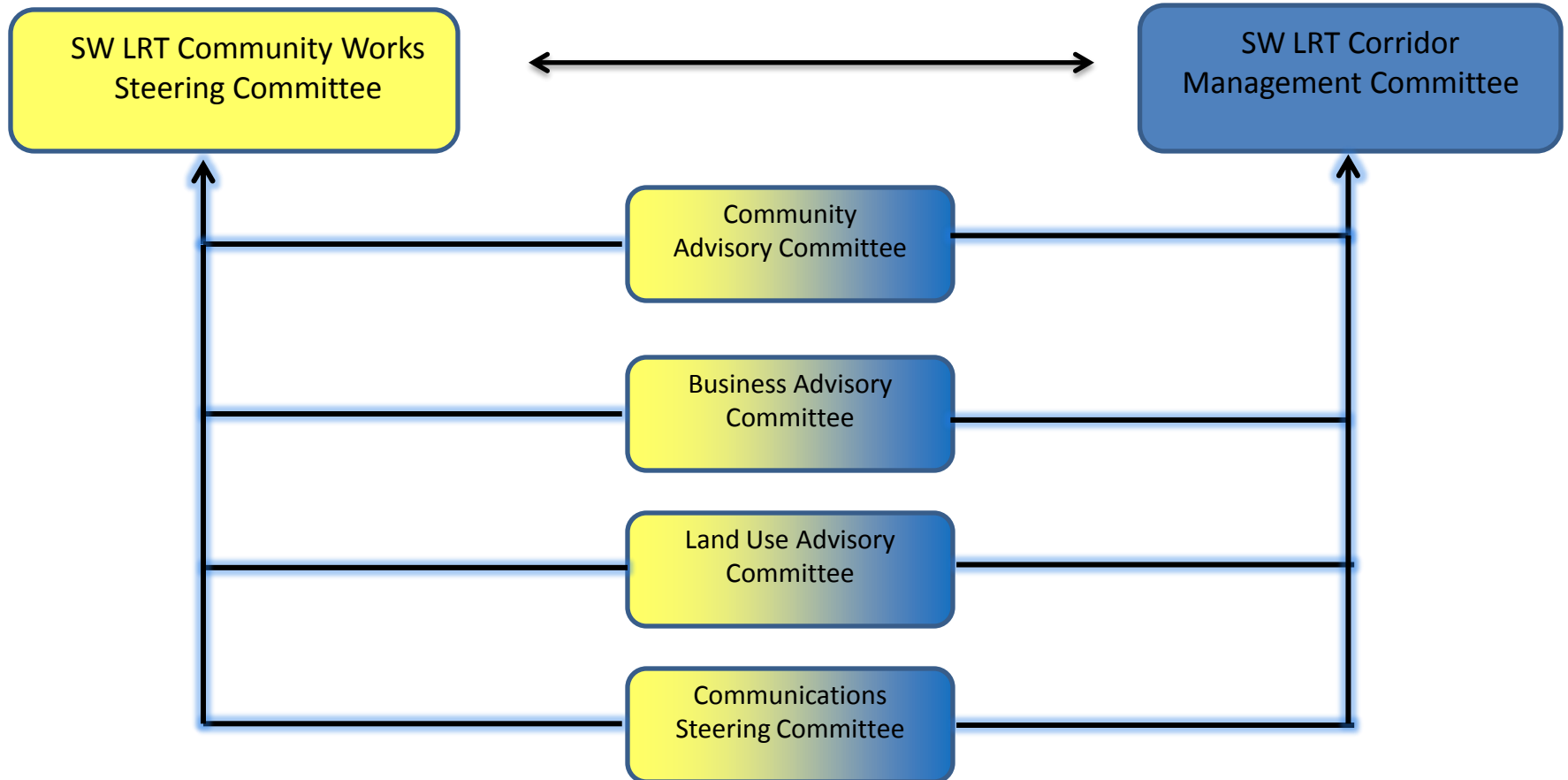
Improving affordable regional mobility for all users





connecting people to jobs, housing, shopping, and fun.

Shared Committee Structure





SOUTHWEST LRT
community works

green means go.

connecting people to jobs, housing, shopping, and fun

Southwest Project **Design Exchange**

In house design exchange where on a daily basis engineers, planners, architects, and others share ideas and collaborate on solutions.





SOUTHWEST LRT
community works

green means go.

connecting people to jobs, housing, shopping, and fun

Community Works/Land Use Division

Assistant Southwest LRT Project Director for Community Works

- Liaison between the Southwest LRT Project Office and Southwest LRT Community Works Project to ensure direct collaboration between engineering & land use planning
- Position housed within the SWPO to facilitate communications/interactions with SWPO staff and to further the Corridors of Opportunity concept to provide for systemic change to integrate land use planning & LRT engineering
- Through an on site “design exchange” facilitate the two-way exchange of accurate and timely information, including engineering and land use plans
- Identify LRT and Community Works projects that need collaboration between both offices and facilitate processes to reach mutually beneficial outcomes (ie, access/circulation within station areas, station design & platform placement, public art, siting of LRT infrastructure, etc...)



SOUTHWEST LRT community works

green means go.

connecting people to jobs, housing, shopping, and fun

Cross Function/Jurisdiction Workshops/Training

Infrastructure &
Public Realm



Development &
LRT basics

EPA Parking
Audit



Transit/Land
Use
Connection

TOD + Walkable
Communities

Financing TOD
& PPPs

Equitable
Development/
Community Benefits



SOUTHWEST LRT community works

green means go.

connecting people to jobs, housing, shopping, and fun

Station Area Vision/Typologies

Hopkins Station METRO Green Line extension



Mainstreet charm in the urban backyard

Hopkins Station offers small town charm along Mainstreet while metropolitan amenities remain nearby. The station is located in a city grid with multiple redevelopment opportunities for Transit Oriented Development, with plans for improved connectors to the adjacent regional trails, pedestrian amenities and public space-making. Larger employers include the City of Hopkins, Hopkins Honda and Superveils.

The surrounding area includes the ARTery, a two-block stretch of Eighth Avenue, with destinations like the Hopkins Center for the Arts, Movable, Idioms, and Midwest Mid-Arts, downtown Hopkins is a vibrant neighborhood combining the business district with restaurants, shops and various types of housing.

Hopkins Center for the Arts is a focal point for culture and entertainment, within walking distance of several restaurants, antique and other shops and a retail florist company.



Fast facts

Population	3,293
Households	1,730
Employment	5,194

Population, Households, and Employment figures are estimates of the City of Hopkins, 2010.

For more information, visit www.hopkinsmn.com
www.southwestlrt.org

SOUTHWEST LRT
community works

ALABAMA

Major **Accomplishments**

- Conducted Corridor Market Assessment
- Completed an Infrastructure Inventory (existing & 2030)
- Received Grants (Met Council & Henn Co TOD, CoO Local Implementation Capacity)
- Conducting Corridor-Wide Development Tools/Authority Analysis
- Developing Transitional Station Area Action Plans (TSAAP)
- Preparing a Corridor-wide Housing Strategy



Creative Tensions

- Lack of a Shared, Common Vision & “Buy In” from all partners
- Number of Jurisdictions/Players Involved
- Language/Professional Discipline
- Communications & Organizational Cultures
- Lack of Clarity on Federal Rules/Regulations
(Conflict of Interest & Acquisition Issues)
- Differing Expectations
- Reconcile “time to do it right” with “on-time & on-budget”
- How to structure trade-off discussions – higher cost, but may reap greater long-term development and sustainability benefits





Lessons Learned:

- Shared Goals
- Patience
- Listening
- Learning
- Experiment
- Respect
- Persistence
- Hard Work
- Change is Difficult and Slow, but Worth it
- Champions and Leadership are Critical



SOUTHWEST LRT
community works

green means go.

connecting people to jobs, housing, shopping, and fun.

For more information on
Southwest LRT Community Works
(beyond the rails),
please visit

www.southwesttransitway.org