

URBAN RAIL

AUSTIN URBAN RAIL PROJECT: A KEYSTONE FOR REGIONAL HIGH-CAPACITY TRANSIT

RAILVOLUTION OCTOBER 2012



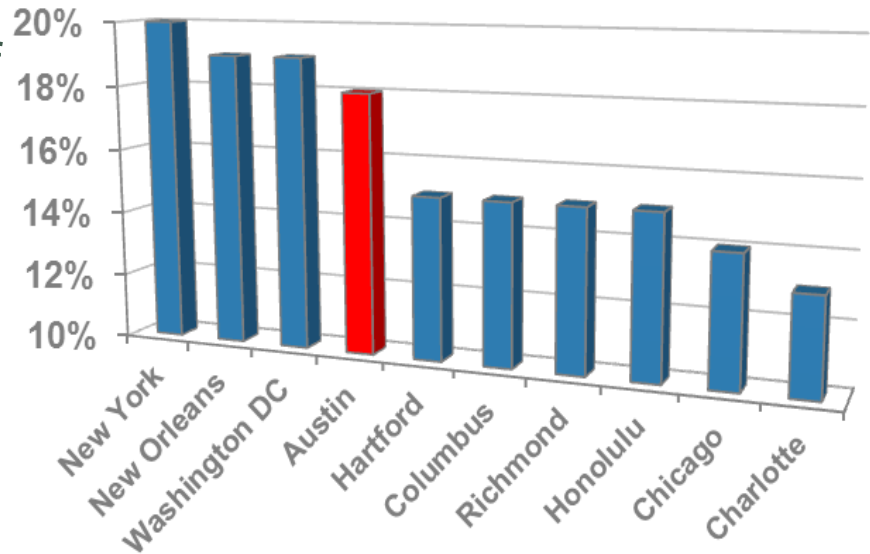
Urban Rail is a part of
 **AUSTIN MOBILITY**
Making mobility better, together.



ACTIVITY CONCENTRATION IN CORE

- About 25% of jobs in the 5-county region located in core (78701, 78703, 78704, 78705)*
- 51,000 students at UT (80% off campus); 9,000 at ACC's Rio Grande campus
- 4th highest CBD concentration in the nation
- 9M SqFt built since 2000 (\$2B value)
- **8M SqFt actively under way, planned** (12+ buildings, 15,000 employees, \$2B value)

CBD Share of Total Urban Area Employment



University students not counted as part of employment density

*U.S. Census Bureau. 2012. OnTheMap Data. Longitudinal-Employer Household Dynamics Program. <http://lehd.ces.census.gov/led/onthemap/>



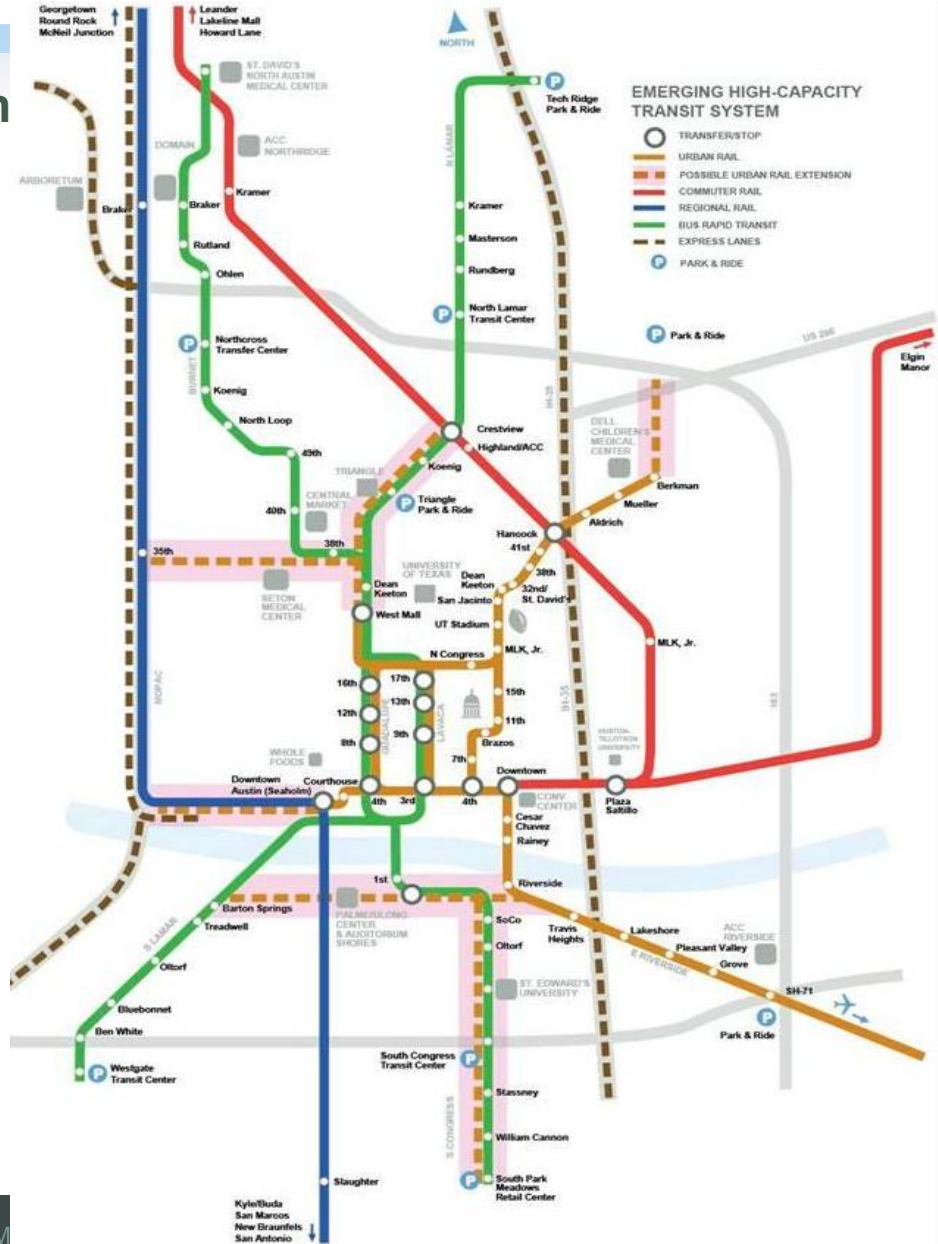


“ONE SYSTEM” TRANSIT OPERATIONS

- **Project Connect: Updated High Capacity Transit System Plan**

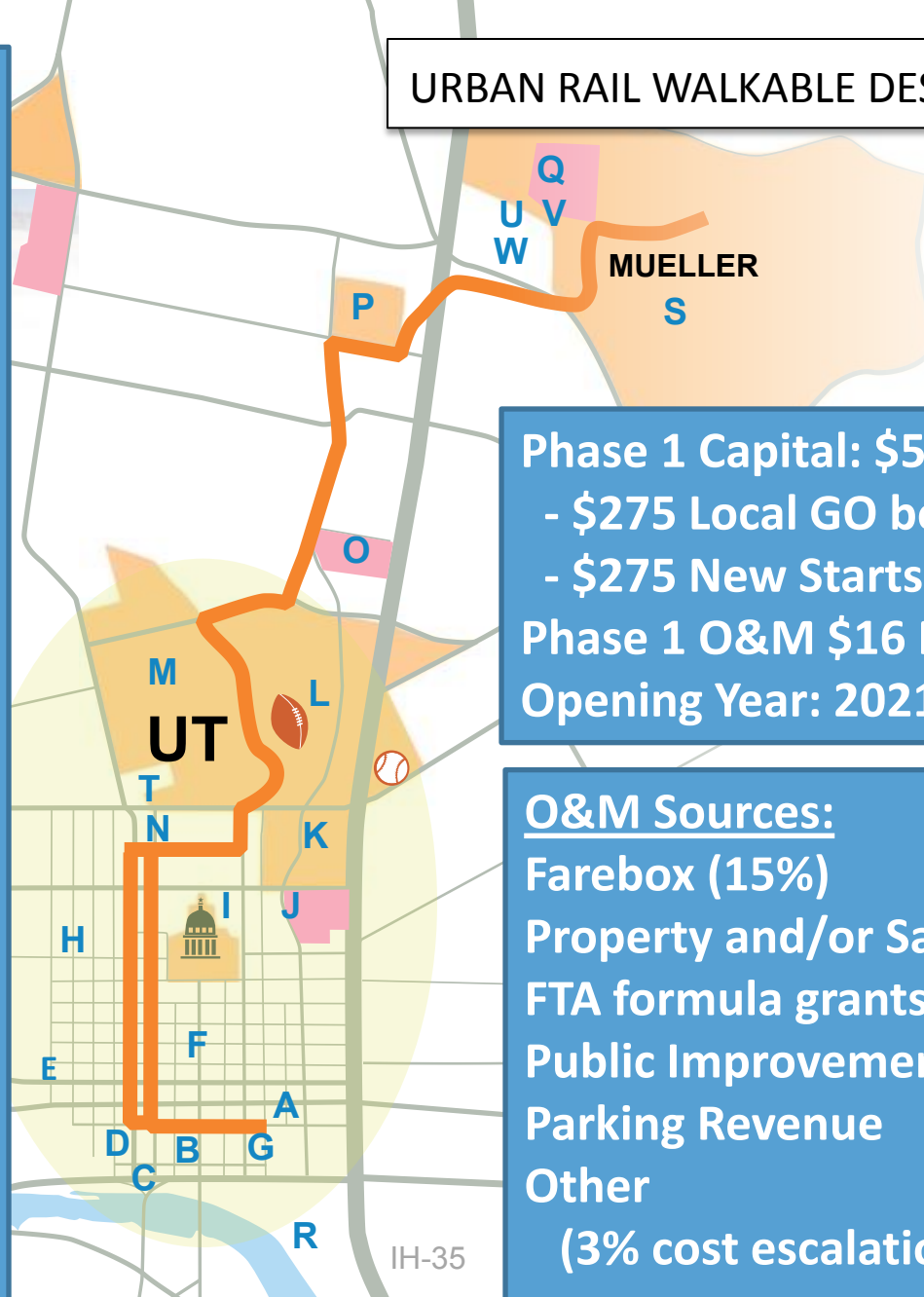
- Commuter Rail**
- Regional Rail**
- Urban Light Rail**
- Arterial Rapid Bus**
- Express Lanes w/Bus**

- **One System Approach – seamless integrated system:**
 - Operations and schedules
 - Maintenance,
 - Fares and routing,
 - Customer service & information,
 - Management,
 - Future planning & design,
 - Facilities



URBAN RAIL WALKABLE DESTINATIONS

- A Convention Center
- B Second Street Retail Dist.
- C Austin City Hall
- D ACL Live/W Hotel
- E Whole Foods
- F Central Business District
- G MetroRail Transfer
- H Travis County Complex
- I Texas Capitol Complex
- J Brackenridge Hospital
- K Erwin Center Arena
- L UT Football Stadium
- M University of Texas
- N Museum District
- O St. David's Hospital
- P Hancock Center
- Q Dell Children's Hospital
- R Rainey Street
- S Mueller Redevelopment
- T ATT Conference Center
- U Seton Administrative Building
- V SELD center
- W Mosaic Phase I and II

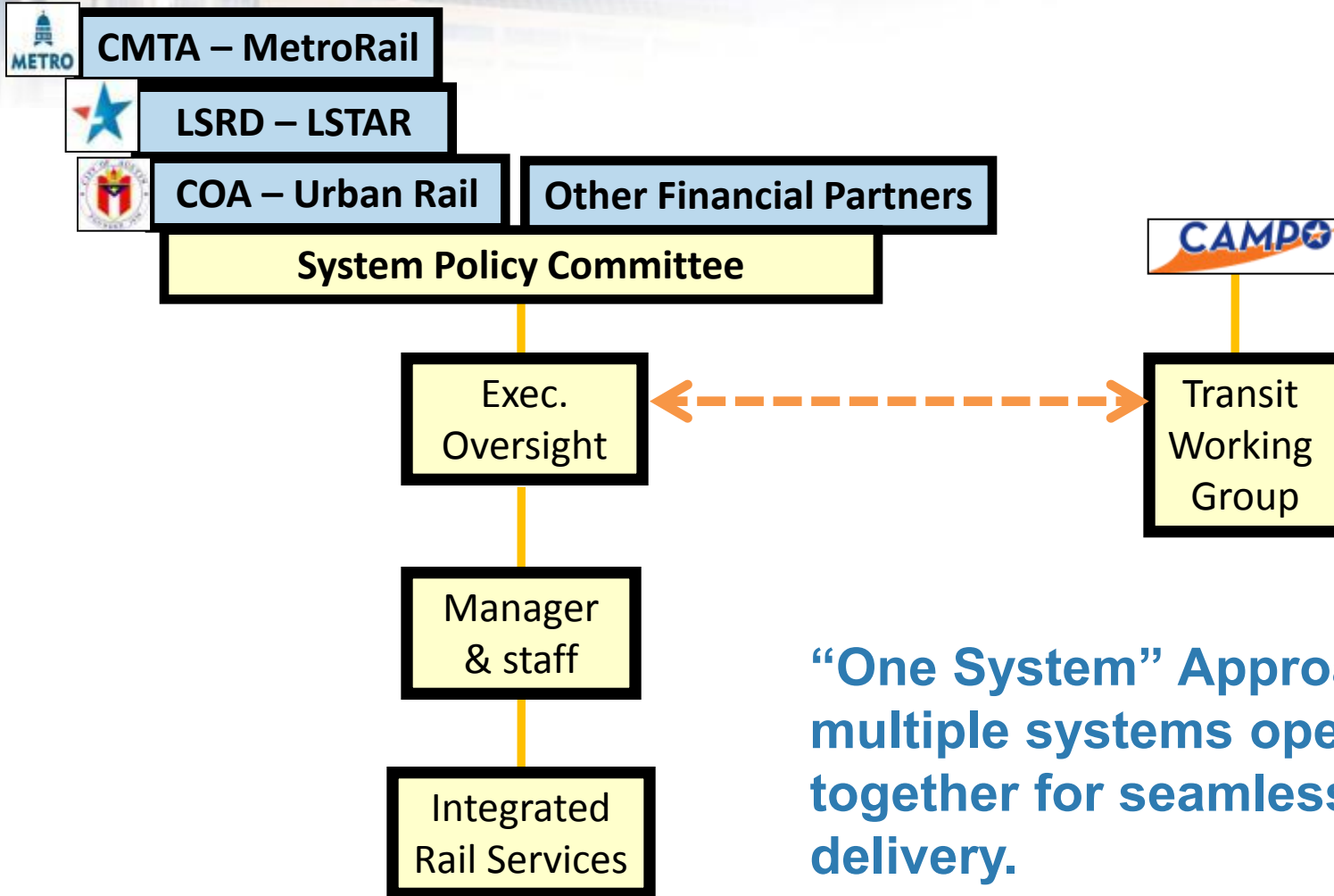


Phase 1 Capital: \$550 M
- \$275 Local GO bonds
- \$275 New Starts
Phase 1 O&M \$16 M/Yr
Opening Year: 2021

O&M Sources:
Farebox (15%)
Property and/or Sales Tax
FTA formula grants
Public Improvement Dist.
Parking Revenue
Other
(3% cost escalation/yr)



PROJECT CONNECT: INTEGRATED RAIL OPERATIONS



“One System” Approach – multiple systems operating together for seamless service delivery.

