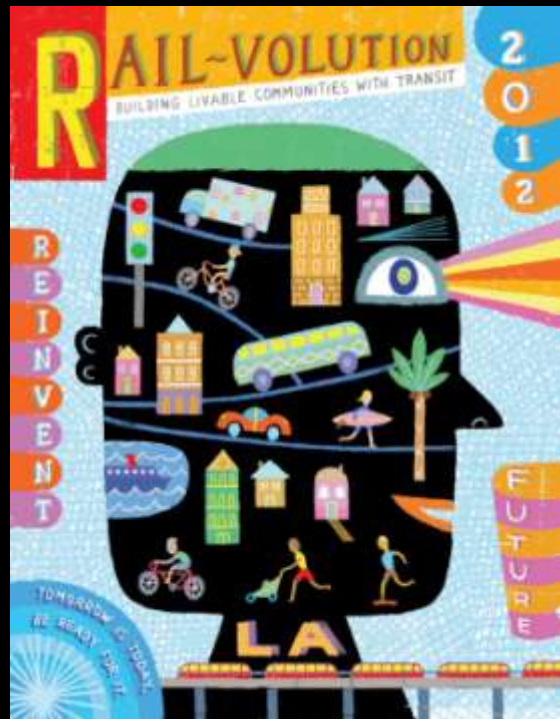




**Building Livable Communities with Transit**



# **Atlanta Regional Commission**

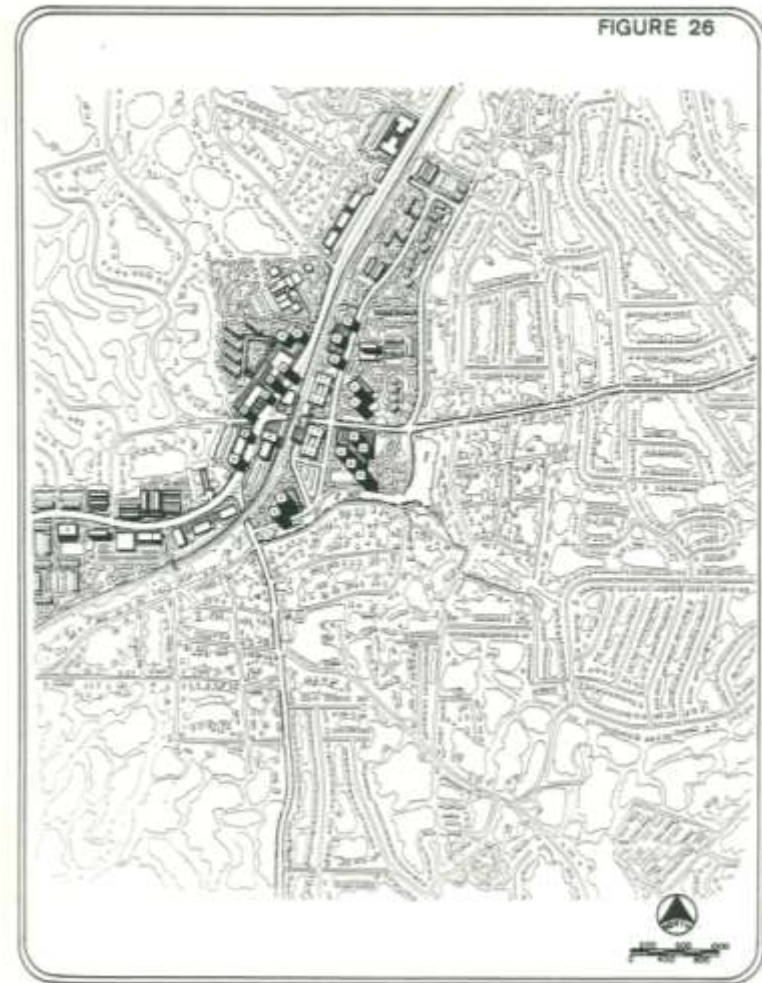
**When the Plan is Not Enough-  
Cooperative TOD  
Implementation**

Tuesday, October 16 at 10:00am

URBAN DESIGN ILLUSTRATION - TOTAL BUILD OUT IN 2000  
BROOKHAVEN STATION AREA

## Transit Station Area Development Studies

- Program started in 1972
- Land Use/Transportation Studies around MARTA referendum systems
  - Provided a local government response to MARTA Plans



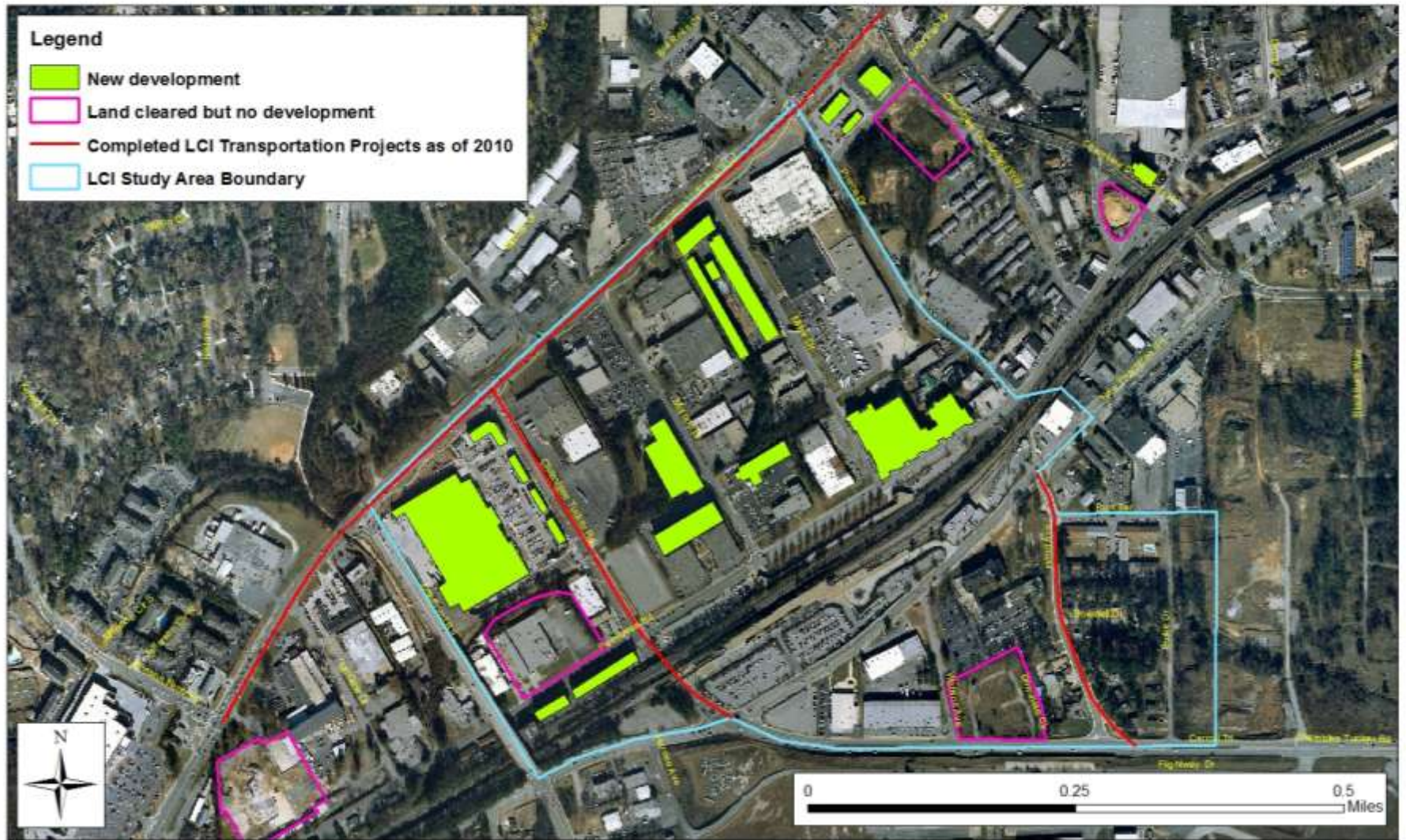
## Livable Centers Initiative

- Created in 1999
- Contains 36 out 38 MARTA Stations
  - \$1.8 million Study Funds
  - \$51 million transportation funds for projects
  - 3 TOD Studies in 2011/12
  - Flex 9 projects to MARTA in 2012 (\$23 million)
  - \$5 million to Streetcar improvements





# New Development in Chamblee MARTA/LCI Area as of 2011



## Atlanta Streetcar

- 2.7 miles of track
- 12 stops
- Funded by TIGER, Atlanta,
- ARC and ADID



# Rail~volution

Building Livable Communities with Transit



- Over 80 acres within 5 min of the line are vacant or underutilized
- <http://www.atlantadowntown.com/initiatives/atlanta-streetcar/revitalization-strategy>

# TOD Hub Collaborative

**TOD Hub:** AHAND, ARC, Atlanta Land Trust Collaborative, Enterprise Community Partners, GA STAND UP, Livable Communities Coalition, Partnership for Southern Equity (PSE)

1. Serve as a champion;
2. Serve as a planner; and
3. Serve as a facilitator.



## Future Activities

- Develop cooperative program with TOD Hub
- Continue Data Collection
- TOD Market Strategy Research (Summer 2012)
- Continue Station Area Charrettes
- Be Pro-Active in seeking TOD

**Rail~Dolution**

*Building Livable Communities with Transit*

## **For more information:**

Atlanta Regional Commission

40 Courtland Street, NE

Atlanta, Georgia 30303

[www.atlantaregional.com](http://www.atlantaregional.com)

Dan Reuter, AICP

dreuter@atlantaregional.com

404.463.3305