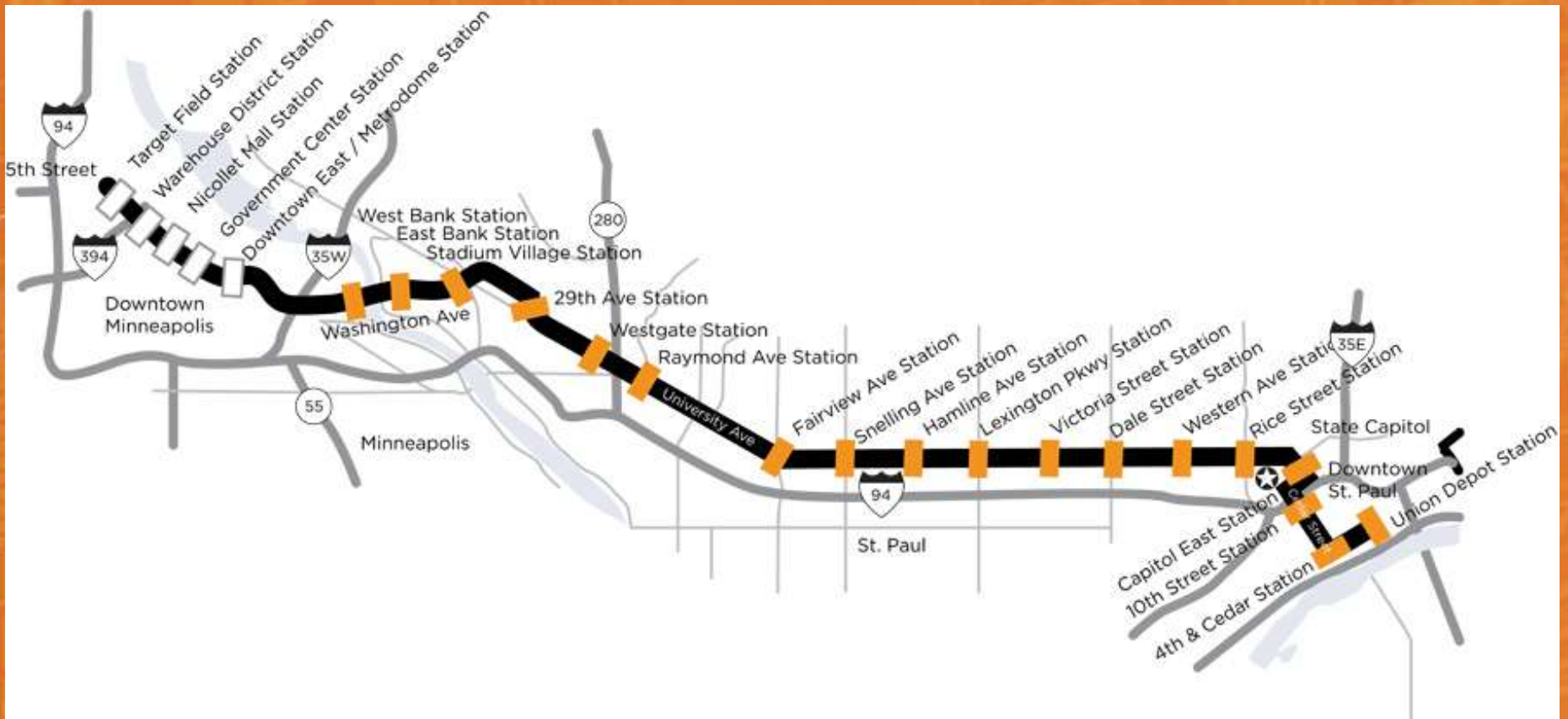


Indicators of Success: How Do You Measure a Livable Community?

October 16, 2012



Members



Annie E. Casey Foundation

Bush Foundation

F. R. Bigelow Foundation

Ford Foundation

John S. and James L. Knight Foundation

Living Cities, Inc.

McKnight Foundation

The Minneapolis Foundation

Northwest Area Foundation

Otto Bremer Foundation

Jay and Rose Phillips Family Foundation of Minnesota

The Saint Paul Foundation

Surdna Foundation

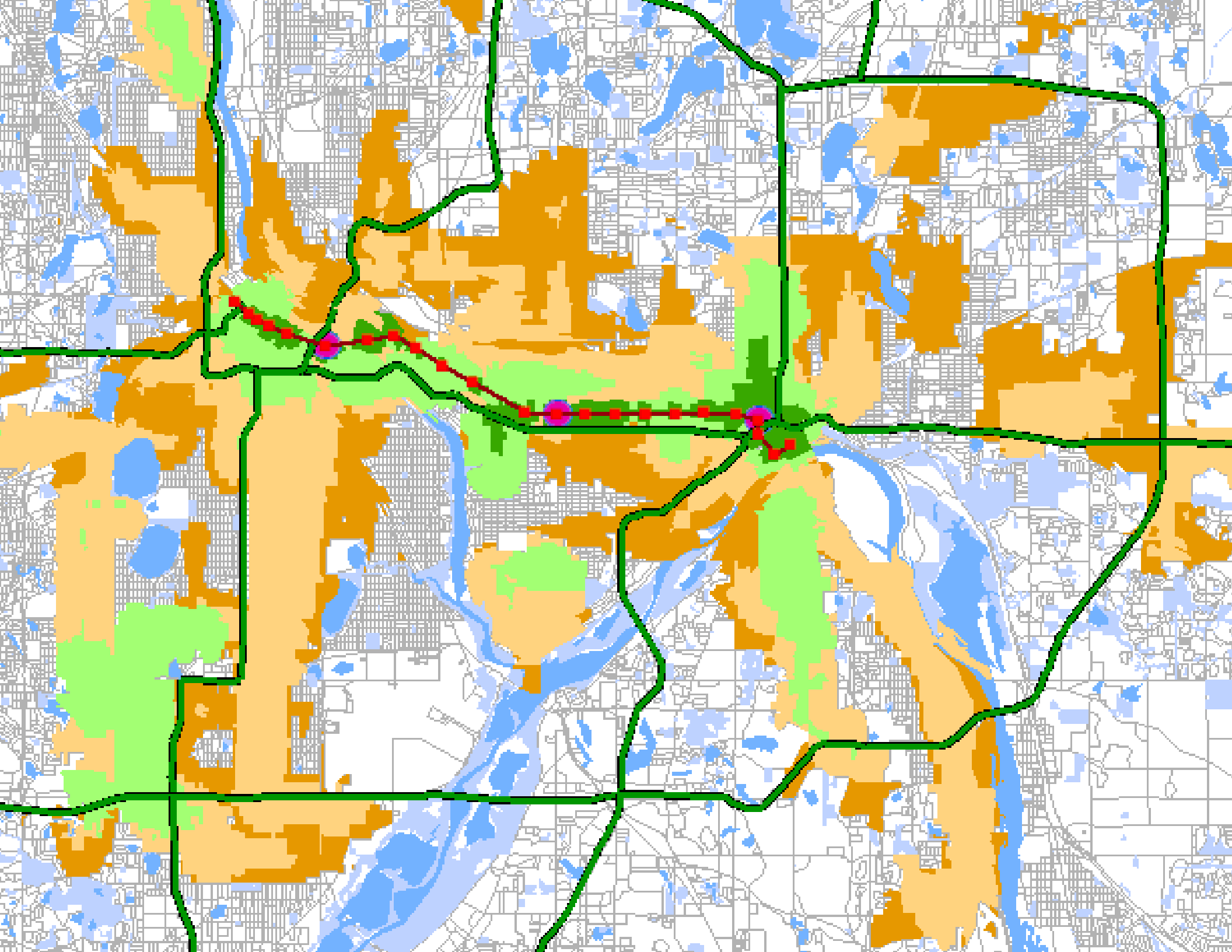
Outcomes



Indicator Selection



- Aligned with four outcome areas
- Small geography
- Timely and sensitive
- Understandable and actionable
- Feasible



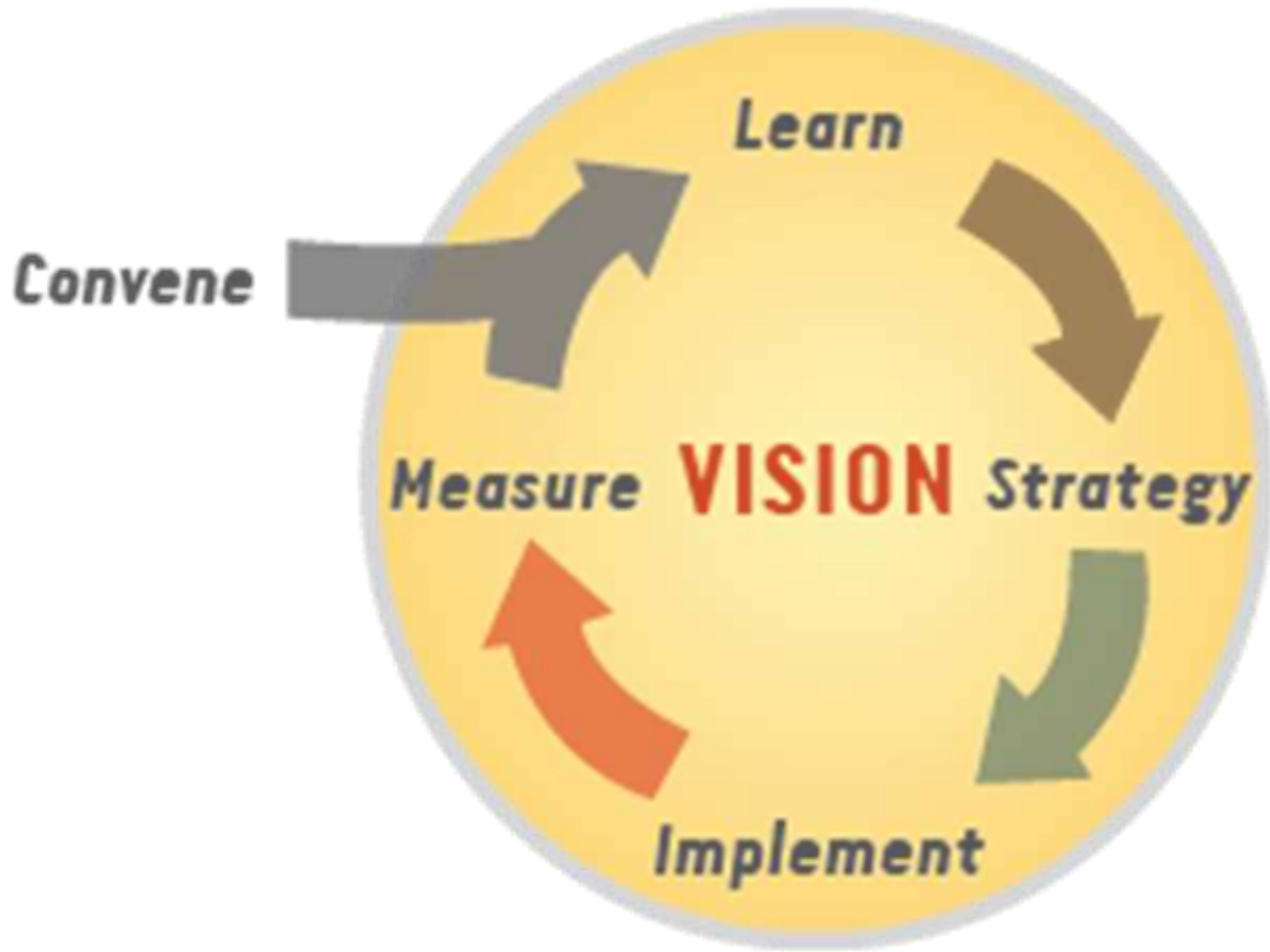
Affordable Housing Indicators



Central Corridor Key Outcomes: 2012 Indicators

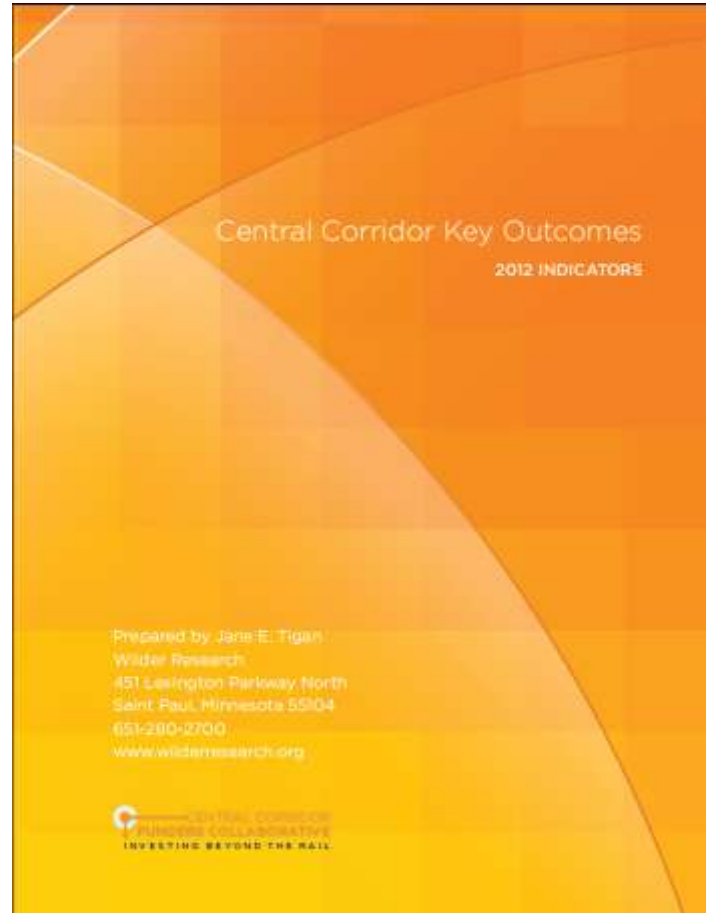
Indicator	Index	Mpls. St. Paul	Central Corridor	Comments
Access to Affordable Housing				
1 People of all incomes live here* Less than \$10,000 Household income (2010 \$) \$10,000 - \$29,999 Household income	Comparison to M/SP	11% 23%	18% 27%	Share of households with low to moderate income remains steady & still higher than M/SP
2 Transit helps families afford living here* Low income households (60% of Area Median Income)	Housing + Transportation <45% of income	47%	41%	41% of income is considered affordable, but the share of income for housing + transportation has increased by 7 percentage points since 2000.

Using Indicators





Central Corridor Tracker



Central Corridor Key Outcomes
- Indicators Report