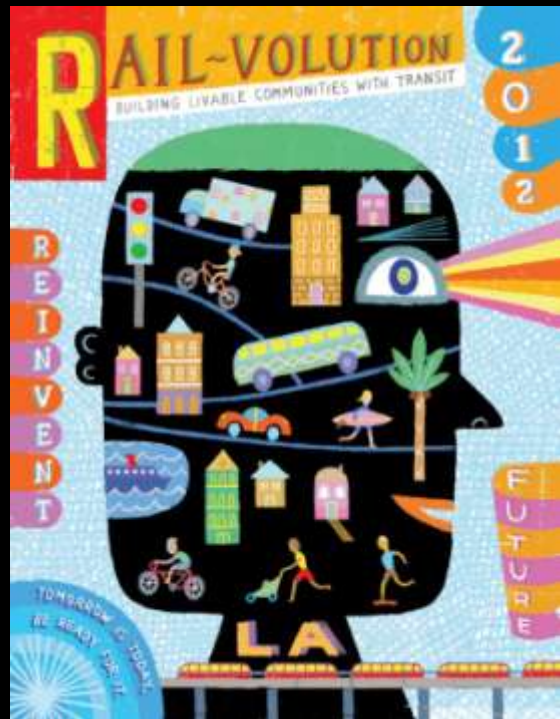




Building Livable Communities with Transit



Bikes and Transit in LA, FOR REAL!

**Anthony Jusay
Transportation Planning Manager
Los Angeles County
Metropolitan Transportation Authority
(Metro)**

Contact info

JUSAYA@Metro.net

213-922-7675

October 17, 2012

Duties and Roles

- Manage Metro grant funded bike projects
- Coordinate internal and external feedback and inputs on bike issues
- Develop and implement strategic bike activities
- Provide design review/comment to integrate bike access with Metro projects

Lessons

- **Initiate**
 - Initiate program and policy changes
 - Figure out how things get done
 - Position early in the planning process

- **Activate**
 - Other departments
 - Let others be heard, not just you
 - Board Directives

Principles

- **Dedicate**
 - Follow the status of projects
 - Stay involved and include yourself
 - Important for you to walk your talk
 - Build relationships, knowledge and expertise in other departments

Where to Start Change

- Bicycle Strategic Plan
- Design Criteria, Specifications and Standards
 - Establish quantities for bike parking space and physical space requirements
 - Establish siting/location requirements
 - Specs for bike parking types (racks, lockers, high-capacity)
 - Able to update and revise
- Active Transportation and Sustainability Policies

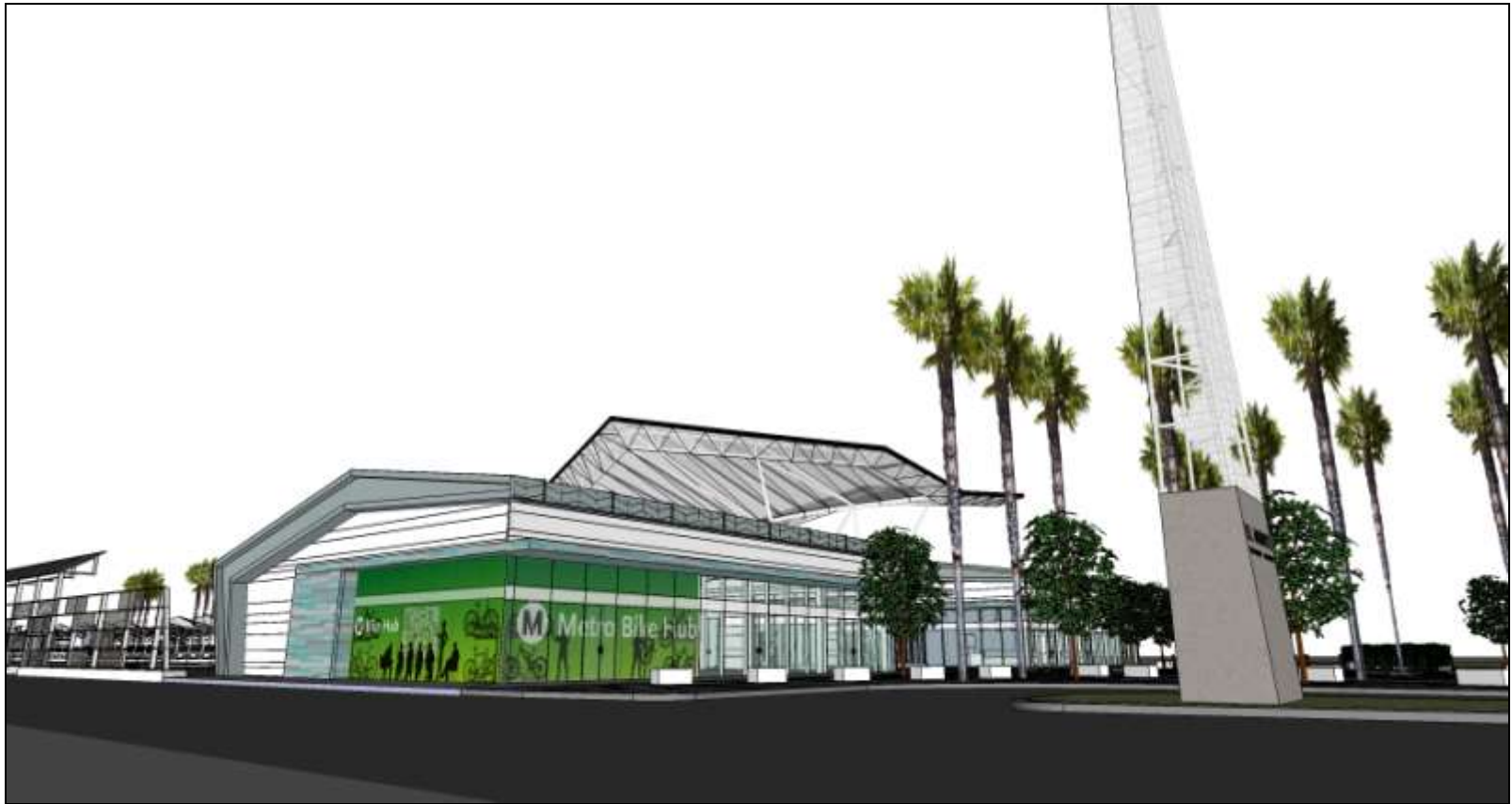
What's wrong with this picture?



What's right with this picture?



Maybe we can make this happen?



We'll make it happen.



Metro Bike Hub

- Secure-Access Control
- High Capacity
- Parks over 60 bikes
- CCTV
- Repair stand

Bicycle Roundtable

- Conversation with Cities and Cycling Community
- Bring other departments to the table
- Work on solutions



- **2010 Bicycle Board Directives**
 - Increase funding in 2011 CFP to \$14 million
 - Develop a plan for adding triple bike racks on buses
 - Develop cost estimate & schedule for retrofitting trains for bikes
 - Revise Code of Conduct for large items on Metro trains
 - Install bike racks on vanpool vehicles
 - Improve wayfinding signage at stations
 - Incorporate bicycle messages in all marketing materials
 - Improve security for bicycles at Metro stations
 - Install stair channels in future transit stations
 - Increase bicycle parking and facilities in new transit projects

LRV Seat Removal



Rail~volution

Building Livable Communities with Transit



Political Will???



Rail~Dolution

Building Livable Communities with Transit

Thank You!

