



Creating Livable Communities with Transit: What is it that only the City can do?

Mercedes Márquez

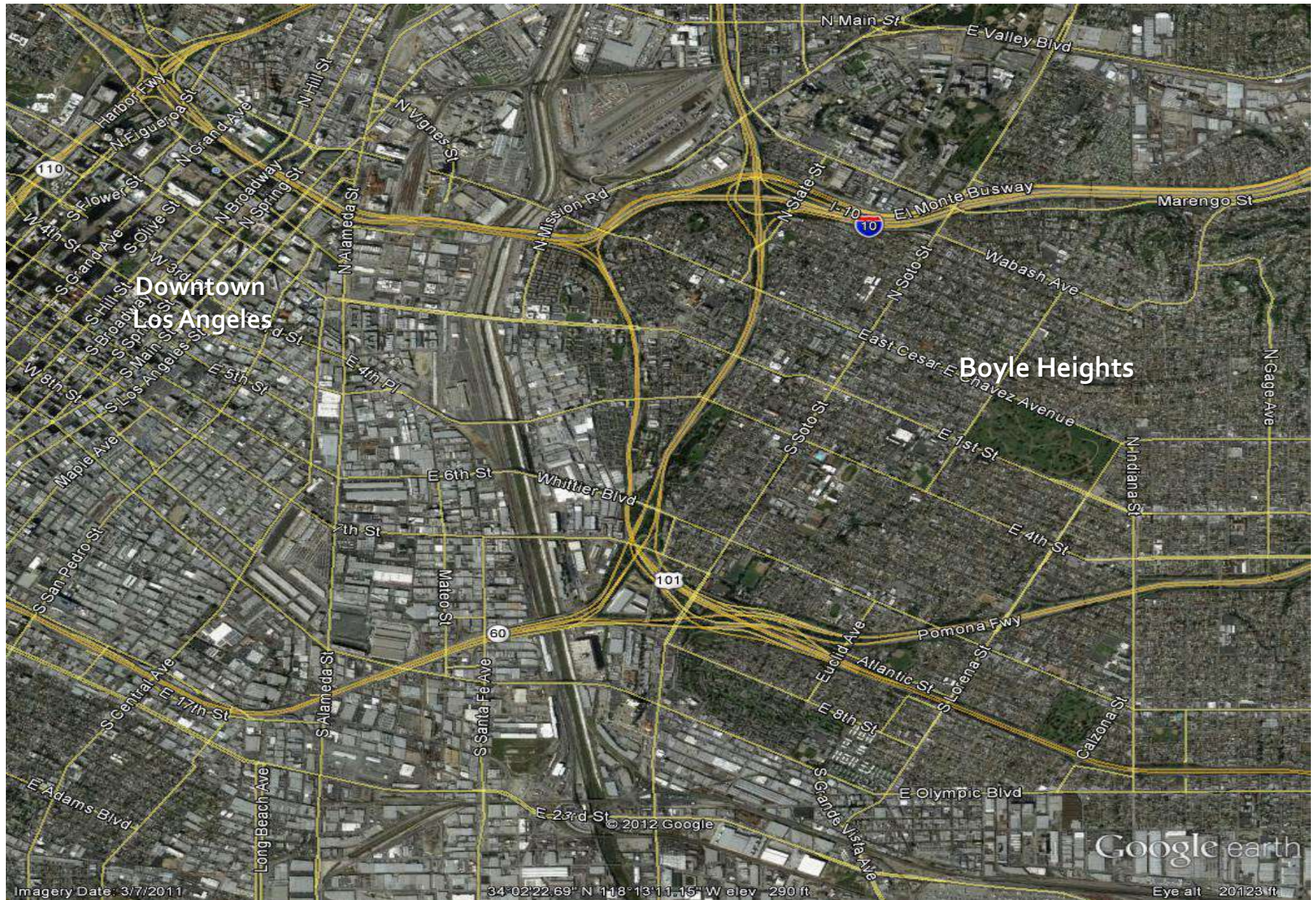
Deputy Mayor for Housing & Interim General Manager

for the Los Angeles Housing Department

October 17, 2012



East Los Angeles Interchange – Boyle Heights





What is it that only the City can do?

- The City of Los Angeles is making decisions about how to spend its share of federal dollars dedicated to:
 - ✓ *Affordable Housing*
 - ✓ *Human Capital*
 - ✓ *Community and Economic Development*
 - ✓ *Emergency Shelter*
 - ✓ *Housing for Persons with AIDS*
- The City is projected to receive approximately \$565 Million from the federal government over the next 5 years. These funds will allow us to leverage \$1.8 Billion.

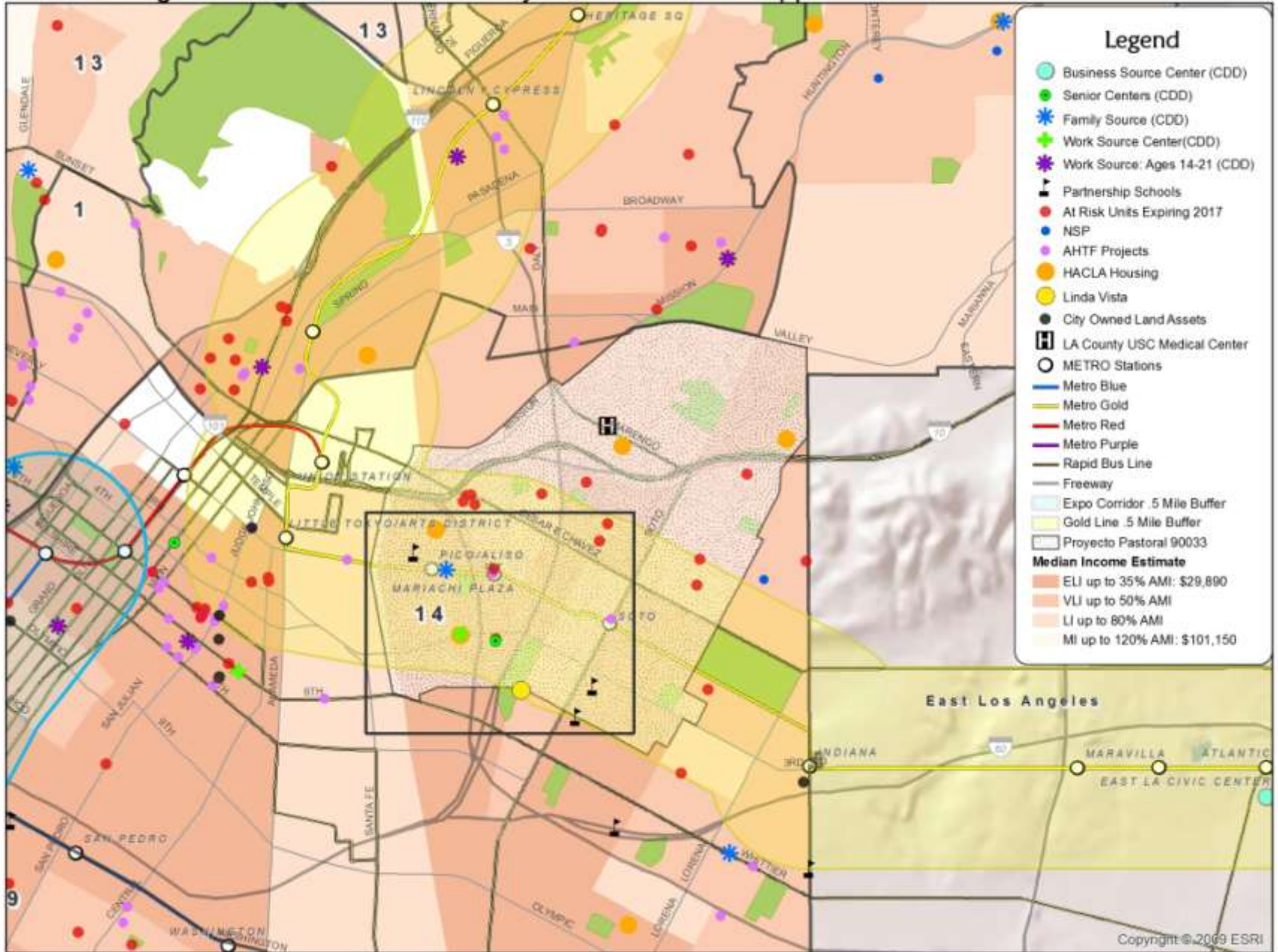
In the next 5 years, \$2.5 Billion in direct and leveraged investment will be made in the City of Los Angeles through our Consolidated Plan



How do we do it?

- **Bust the Silos Across Departments and Across Commissions**
- **Transit Corridors Cabinet Guided by a TOD definition (<http://lahd.lacity.org>)**
- **Place Based Focus**

East Los Angeles - Gold Line - Community Investments and Opportunities





Los Angeles Housing Department

LAHD

Los Angeles' Transit Corridors

For more on Los Angeles' Transit
Orientation, please go to:

<http://lahd.lacity.org>

THANK YOU!