

Building Community: Diversity, Equity, Strategy

Monday, Oct. 21 10:00 am

Moderator:

- Andriana Abariotes, Twin Cities LISC aabariotes@lisc.org

Panelists:

- Amy Cotter, Metropolitan Area Planning Council acotter@mapc.org
- Tony To, HomeSight tony@homesightwa.org
- Rebecca Saldaña, Puget Sound Sage rebecca@pugetsoundsage.org



MSP Green Line:

- 11 miles, Connecting CBDs
- 92,228 People
- 1,144 Businesses

\$143 million in economic activity along line (2013)

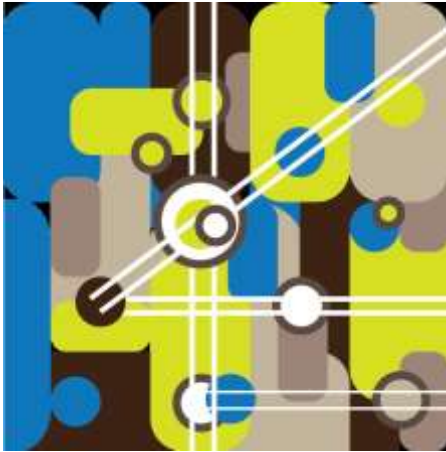




FROGTOWN SQUARE



<http://www.mapc.org/>



The Growing Transit Communities Strategy

Puget Sound Regional Council (PSRC)

<http://www.psrc.org/growth/growing-transit-communities/growing-communities-strategy/>



providing reliable access to transit



Puget Sound Sage

Growing communities where all families thrive



Seattle – Who will benefit from new growth?

TOD that is Healthy, Green & Just

- Diverse, growing economy
- Fast-growing populations
 - High-tech, Global Health
 - Immigrants and refugees
- Rapid growth and development in urban core
- Massive investment in light rail



Rainier Beach Community Empowerment Coalition

www.rbcoalition.org



Transit Justice Youth Corps: 200 surveys, 3 key findings, crafting & incorporating solutions into City and County policies.

Coalition Building

➤ *Voice for Community Controlled & Inspired Development*

- Community ensures development will create community benefits & long-term sustainability.
 - Set the vision—deep engagement of full community in neighborhood planning
- Takes resources---time, money, and long-term investments
 - Leads the way
- Government resources and development partner with community
- Equals better economic, environmental, and equitable outcomes.



South Lake Union – Tremendous Height Increase

Who will benefit?



340 acres North of downtown

Rezone: 40-125 ft to 125-400ft

\$500 million in public works and amenities

Hottest development area in the city
-Amazon, UW Medicine,
biotechnology firms



South Lake Union – What We Achieved

Vulcan Smited: “Paul Allen Is Very Disappointed”

By Ellis E. Conklin Thu., Apr 25 2013 at 07:01AM

 Like 29  Send  Tweet 1  Submit

The natives are restless in Allen Town.

Paul Allen's Vulcan Real Estate company is bitterly unhappy with the Seattle City Council's unanimous vote Monday to sharply increase fees that they and other developers will have to pay toward providing affordable housing in South Lake Union.

“In choosing to raise fees, they are sending a message to developers and investors that there's

Council Stands Up to Vulcan in South Lake Union

posted by ANNA MINARD on MON, APR 22, 2013 at 5:46 PM

After public comment from housing advocates that was mostly congratulatory, the Seattle City Council went ahead and voted unanimously to pass out of committee **Mike O'Brien's more aggressive of the moderate proposals** (which we [wrote about briefly here](#)) for some affordable housing in South Lake Union as part of the neighborhood's big rezone, which O'Brien calls "a modest step in the right direction."



South Lake Union – What We Did

Built cross-sector, multi-racial coalition
Unions
Grassroots groups
Environmental organizations

Carefully crafted messages

Timely policy analysis and research

Assembled legal team

Worked closely with Council champion on inside to
get five votes



Next Steps

- Citywide review of inclusionary housing policies
- Craft a model policy to address unique legal challenges in WA state
- Organizing community, labor and environmental leaders around
 - Core principles
 - Advocacy



Session Dialogue:

- Questions?
- Emergent themes and tools
- Continuing the conversation

