

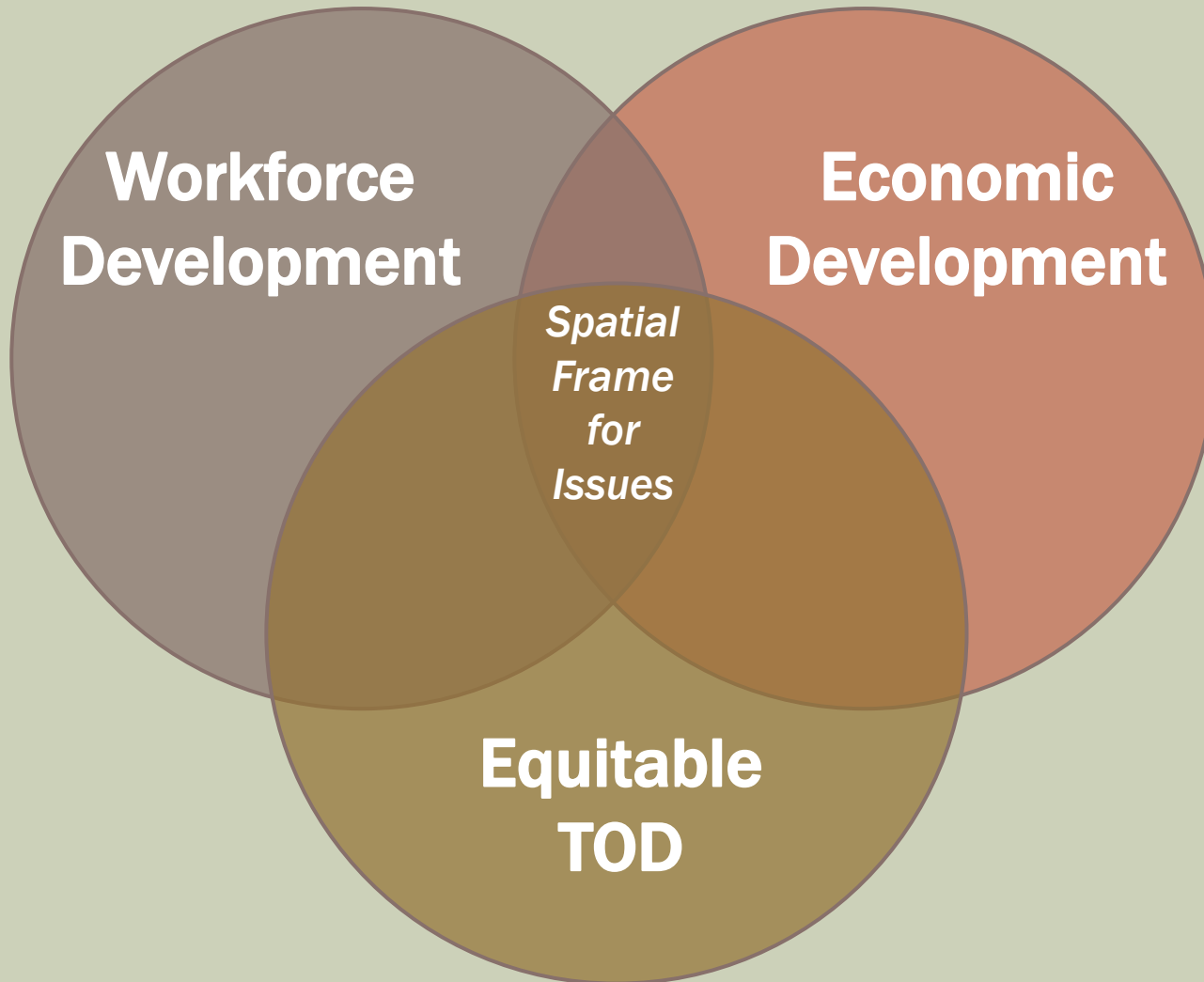
MOVING TO WORK

**Understanding How Transit and
TOD can Improve Economic
Opportunities for Low Income
Bay Area Residents**

PRESENTATION OVERVIEW

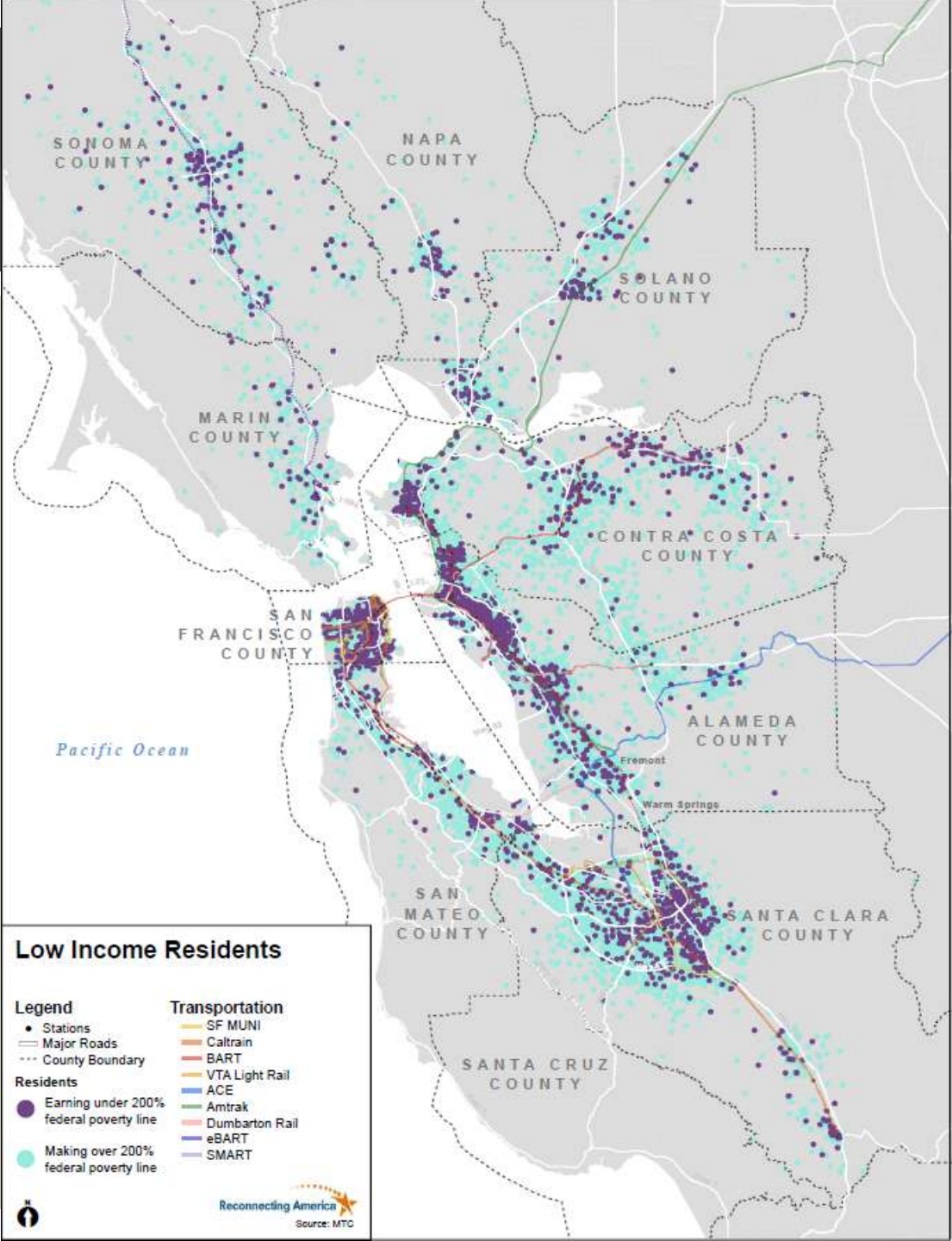
- Objectives of Study
- Transportation Barriers for Low Income Workers
- Industries of Opportunity
- Recommendations

MOVING TO WORK



LOW INCOME RESIDENTS LIVE EVERYWHERE

Dispersion of low income residents is a transportation challenge

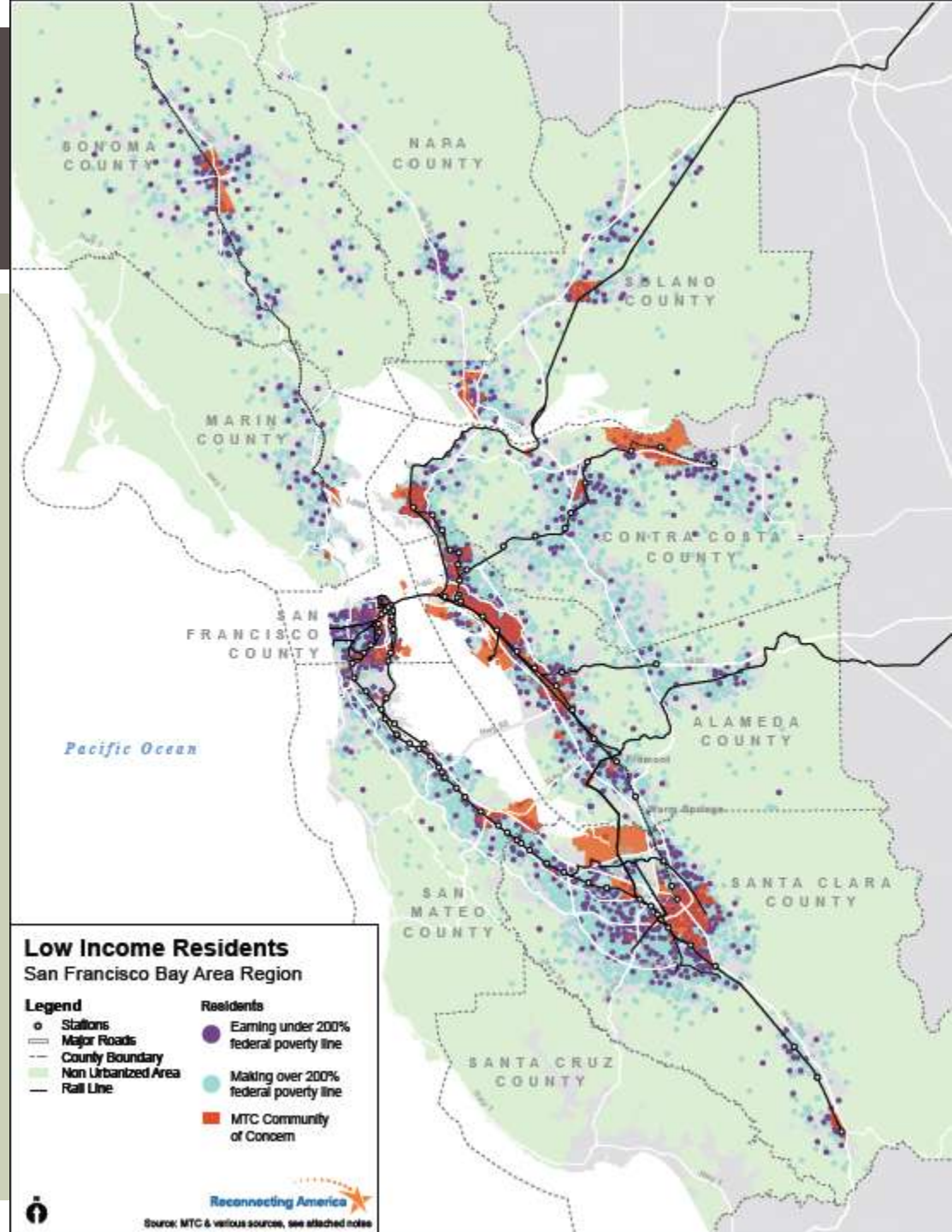


LOW INCOME RESIDENTS AND TRANSIT DEPENDENCE

But 40% live in Communities of Concern

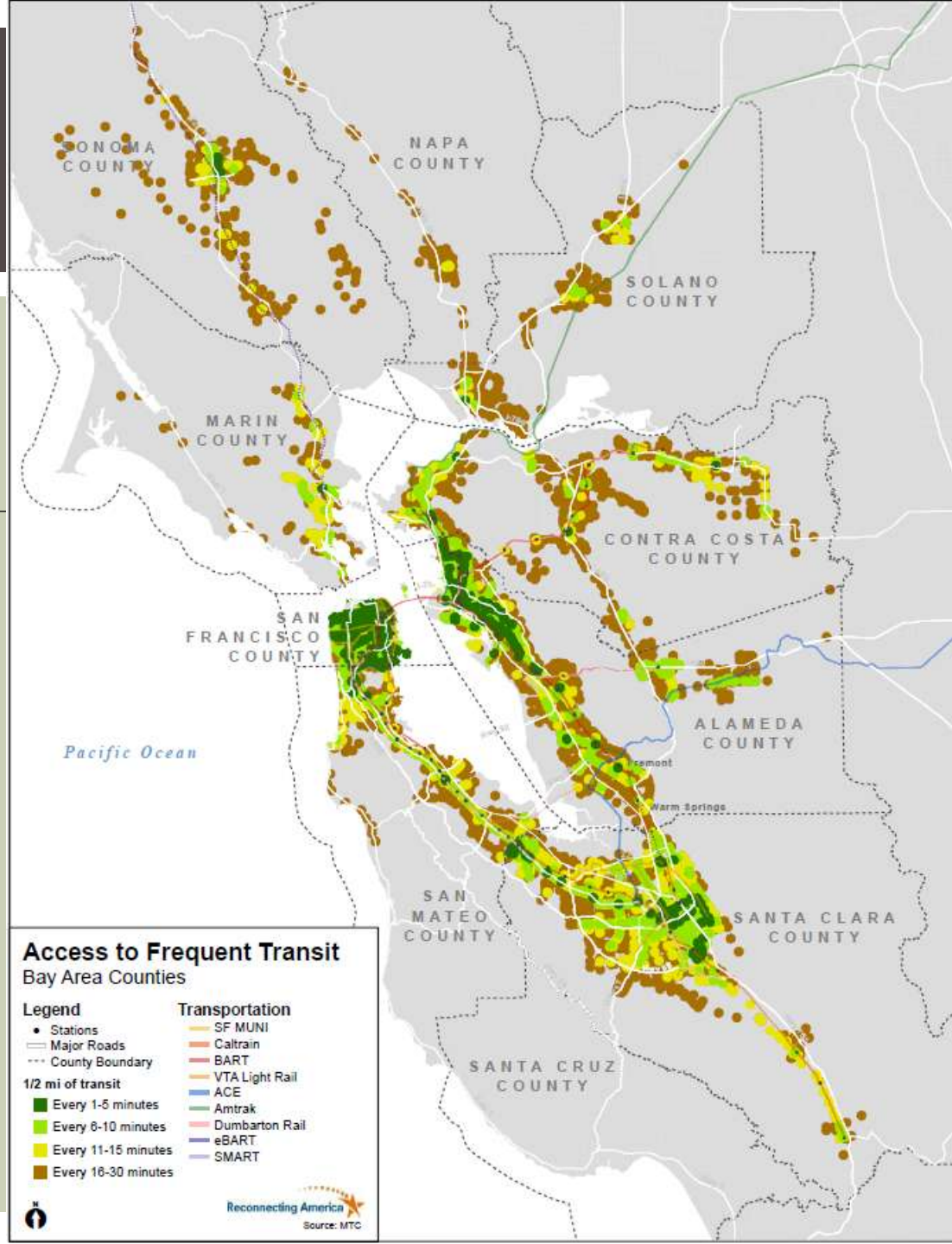
Concentrated poverty

Transit dependence



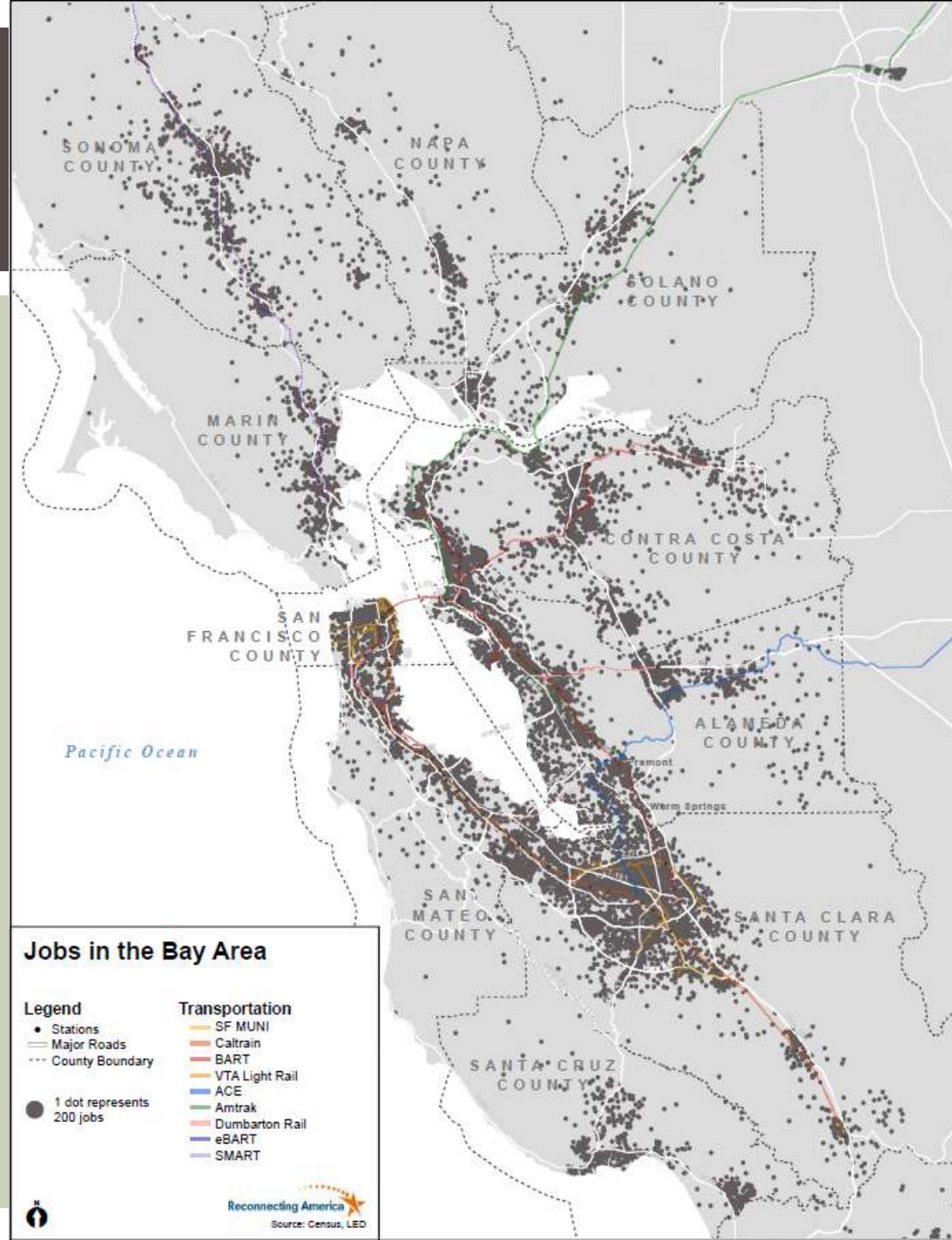
ACCESS TO TRANSIT

Transit Frequency	% of all jobs
1 - 5 minutes	32%
6 - 10 minutes	22%
11 - 15 minutes	3%
16 - 30 minutes	33%



WHERE JOBS ARE LOCATED

Jobs are dispersed throughout the Bay Area, but also concentrated in the inner ring of the bay



STRATEGIES TO EXPAND ECONOMIC OPPORTUNITIES

- **Middle Skill Jobs**
 - “Industries of Opportunity”
 - Education and Training for Industries
- **Expand Quality Jobs in Other Industries**
- **Small Business Development**
- **Removing Barriers to Employment**
 - Adult High School Education
 - Childcare
 - English Proficiency
 - Criminal Records

**Moving to Work:
Public Transportation
and TOD**

INDUSTRIES OF OPPORTUNITY: VALUES

HUD Grant Proposal Statement on Industries of Opportunity:

“’Industries of Opportunity’ are those that provide living wage jobs that put low and moderate income workers on a clearly defined career pathway to economic self-sufficiency, are close to transit, and are accessible to low-income communities.”

INDUSTRIES OF OPPORTUNITY: VALUES

- High % of Living Wage Jobs
- Lower Educational Barriers to Entry (i.e. BA not required)
- Job Security (requiring skills and experience)
- Career Ladder Positions
- Anticipated Job Openings, either via Growth or Replacement
- Drive Regional Economic Growth

INDUSTRIES OF OPPORTUNITY

- Health Care  
- Biotech/Life Sciences  
- Energy  
- Advanced & Food Manufacturing   
- Information Technology   
- Transportation & Logistics 

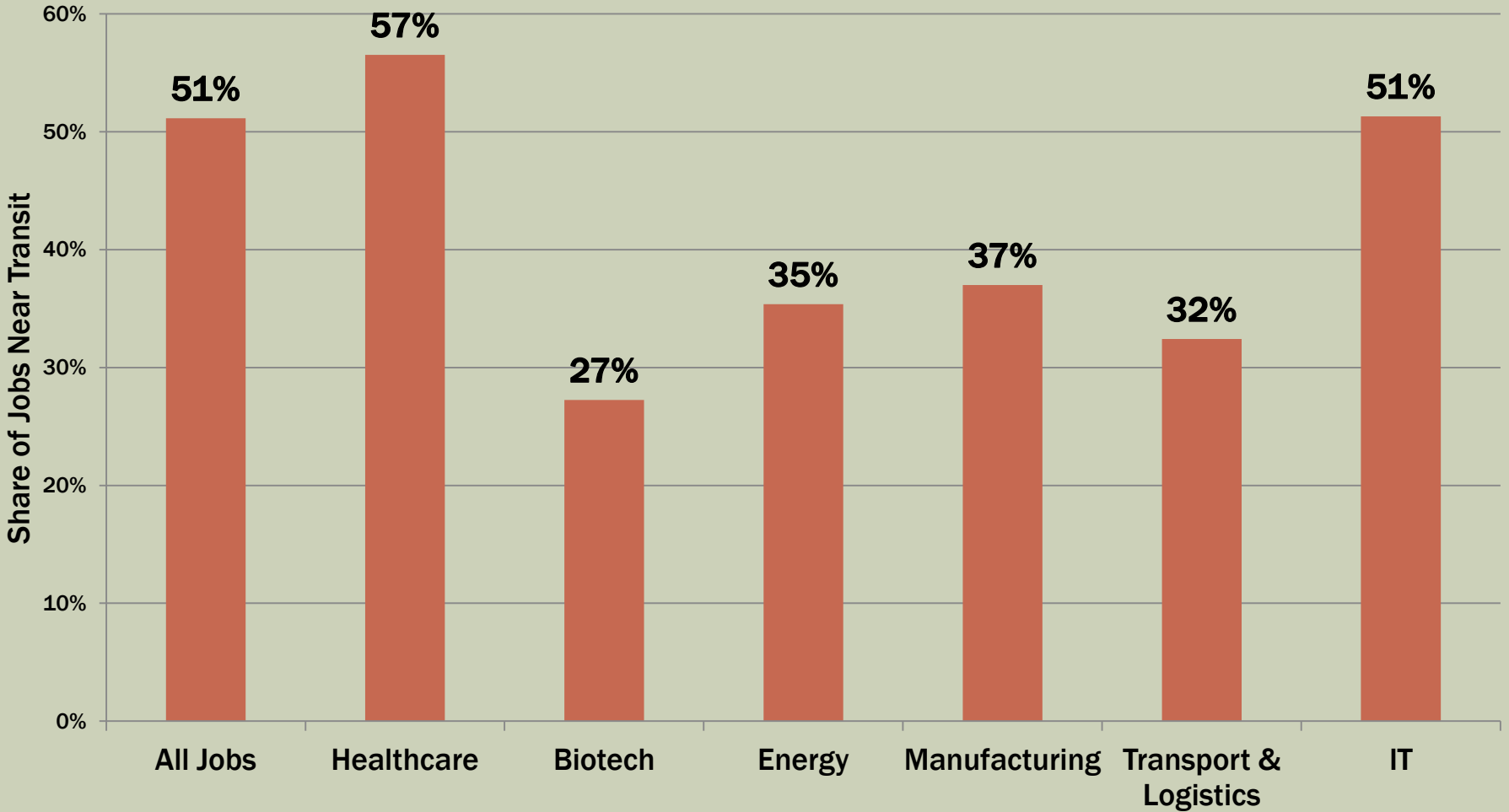
 Workforce Development Focus

 Economic Development Focus

 Community College Consortium Focus

INDUSTRIES OF OPPORTUNITY

JOBS NEAR TRANSIT



Source: NETS, Bay Area Council

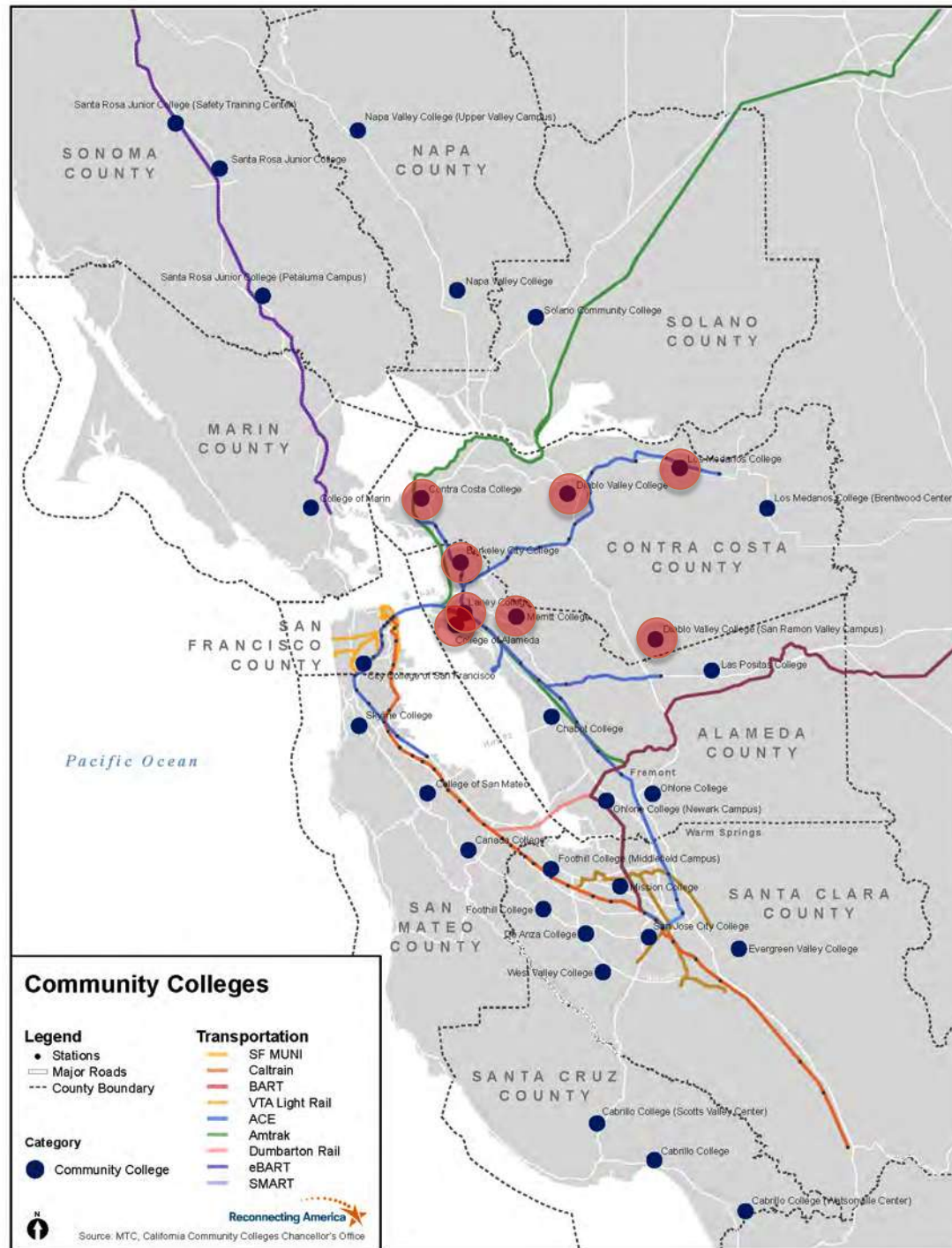
RECOMMENDATIONS

- 1. First/Last Mile Connections**
- 2. Transit Incentives from Employers/Workforce Services**
- 3. Regional Collaboration**
- 4. Further Research**

3. REGIONAL COLLABORATION



- Help low-income students access regional industries: energy, healthcare, IT, logistics, & advanced manufacturing
- Combines contextualized basic skill classes with technical training
- Expanded support system for students
- Over 20 different programs in various sectors



MOVING TO WORK
www.moving2work.org