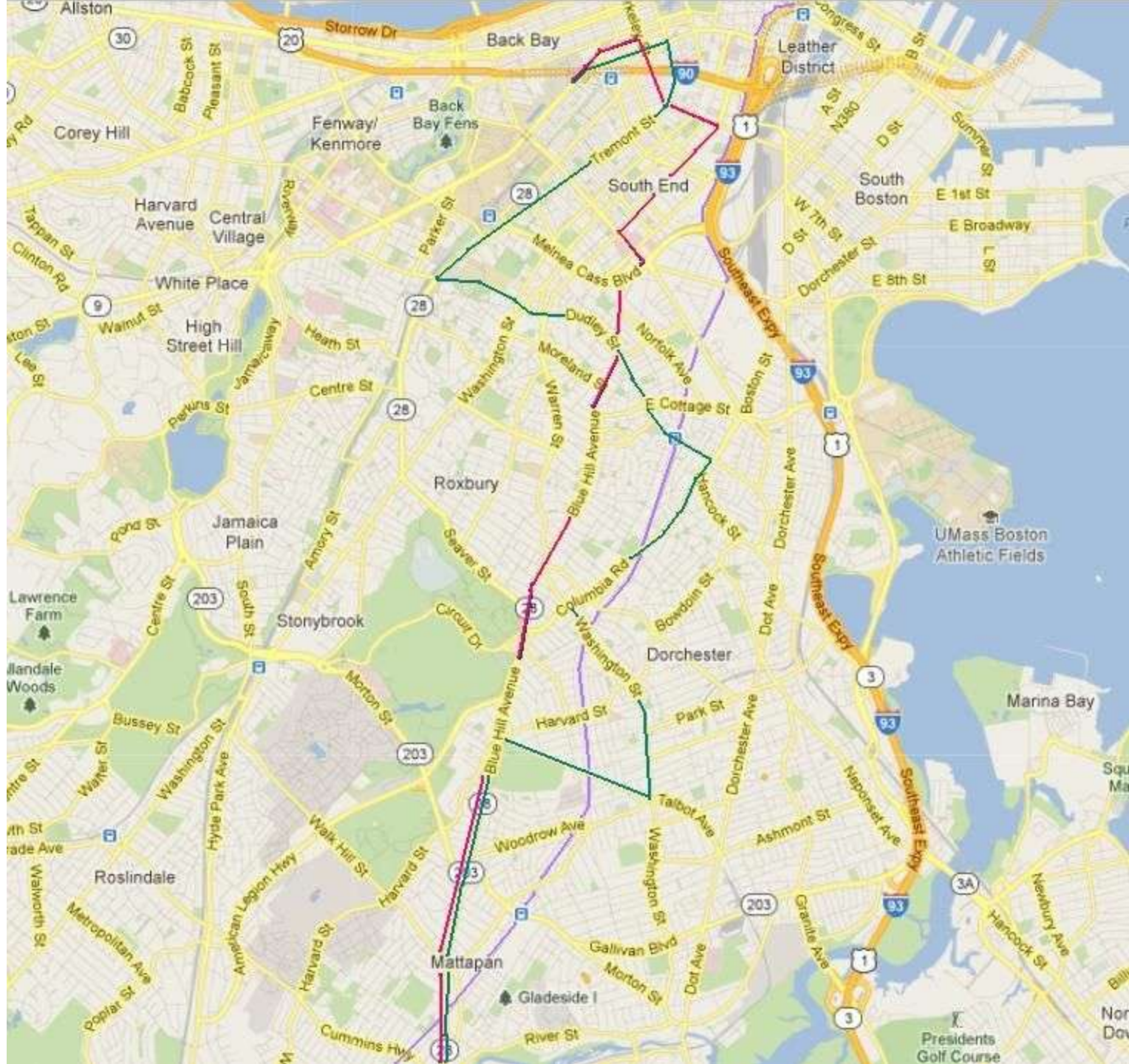


# From Policy to Practice in Boston's Neighborhoods: Bob Van Meter Greater Boston Local Initiatives Support Corporation

- Introduction-
- Overview of Boston and selected Boston initiatives with climate change agenda in urban neighborhoods
- Deeper look at projects in the Fairmount corridor
- Community engagement and community based organizations with legitimacy and capacity are critical to address climate change.
- Key emerging challenge: Fear of gentrification and displacement



# Selected Greater Boston Initiatives and Projects Seeking Climate Change and Sustainability Impact

- HUD Sustainable Communities Consortium/Metropolitan Area Planning Council
- Great Neighborhoods Initiative/Massachusetts Smart Growth Alliance
- Fairmount Corridor Collaborative and Fairmount Coalition
- Resilient Communities/Resilient Families of Greater Boston Local Initiatives Support Corporation
- Talbot Norfolk Triangle Eco Innovation District/Codman Square NDC
- Quincy Corridor Choice Neighborhoods Implementation Grant

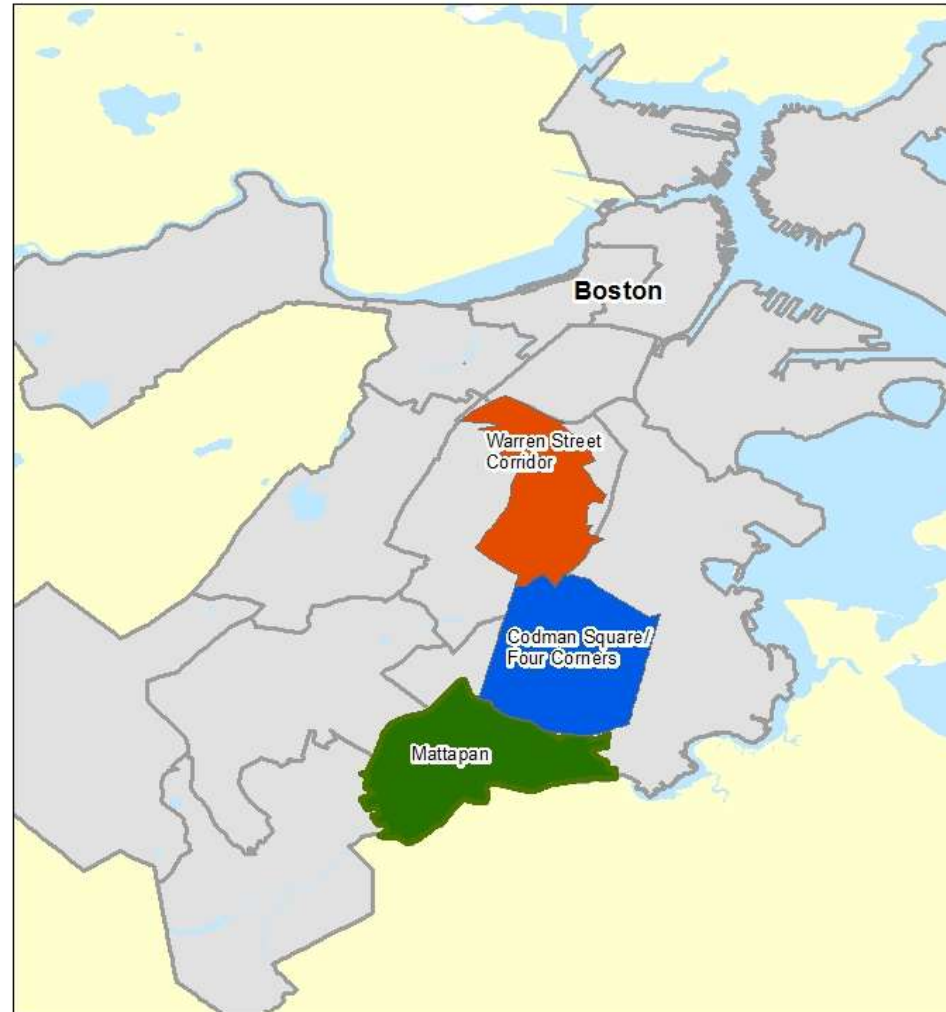
# Climate Change Impact initiatives continued

- Massachusetts Green Retrofit Initiative/Boston LISC and New Ecology
- Equitable TOD Accelerator Fund-Greater Boston LISC, Massachusetts Executive Office of Housing and Economic Development with Boston Foundation, Hyams Foundation
- Renew Boston/ City of Boston
- Transportation for Massachusetts
- Green Justice Coalition
- Green Ribbon Commission



Resilient Comn  
Resilient Fan

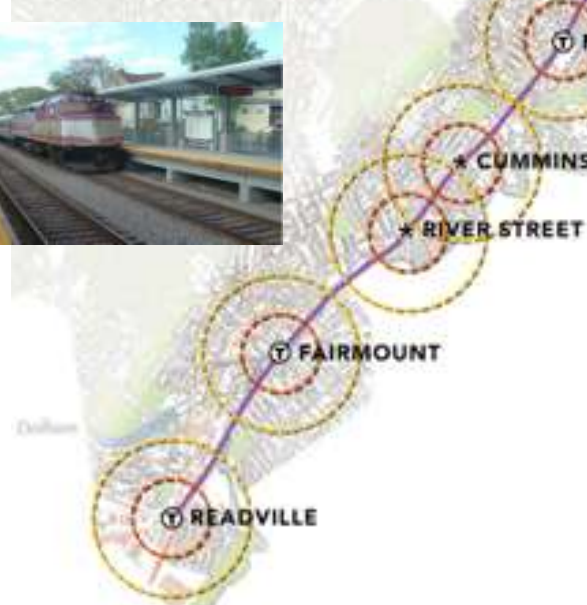
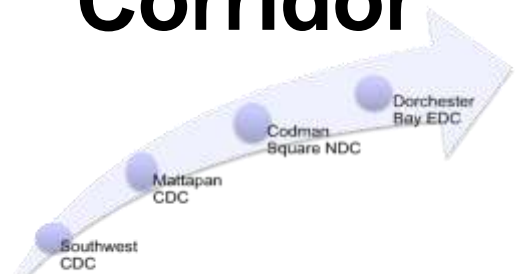
# LISC







# The Fairmount Corridor



- WALKING DISTANCE ZONE**
- 1/4 mile radius—a 10- to 15-minute walk
  - 1/2 mile radius—a 20- to 30-minute walk
- STATIONS**
- Ⓜ Existing
  - ★ Proposed





2227

Environmentally Friendly Fuel



Fairmount Commuter Rail Line now open!

ONE YEAR FREE RIDE ONE YEAR FREE RIDE

For more information visit us at [www.fairmount.commuterrail.com](http://www.fairmount.commuterrail.com)





# Pearl & Bornstein Food Production Center





# Overview

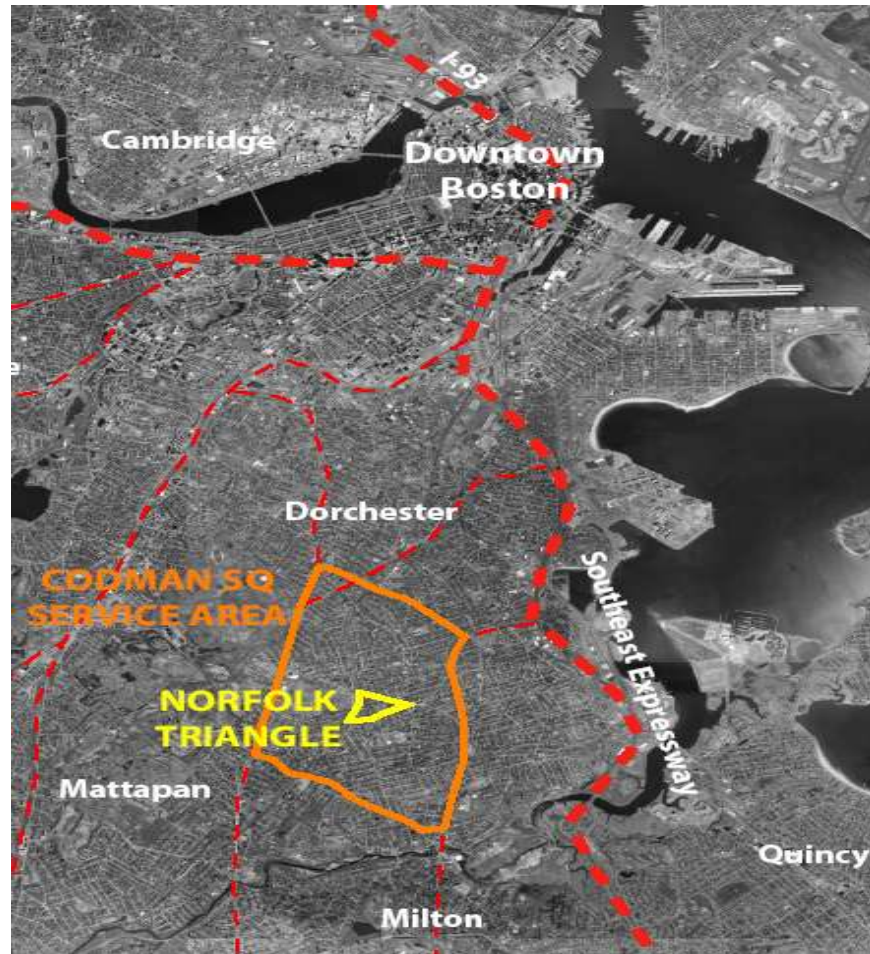
## The Fairmount Indigo Line is:

- The shortest commuter rail line in Metro Boston.
- It runs from Readville to South Station through 9 miles of densely populated urban neighborhoods.
- Nearly 90,000 people live within 1/2-mile of the stations along the corridor.
- Median household income within a 1/2-mile radius of the existing and proposed stations, is approximately \$17,000 less than the regional average
- Transit ridership is nearly 4 times as high as the regional average

**It offers a major opportunity to transform Boston's urban core creating sustainable communities that are socially just, economically vibrant, environmentally sound**



# Talbot Norfolk Triangle





# Ribbon Cutting for Talbot Avenue Station on Fairmount Line



# Conclusion

Persistence of community based organizations with vision is critical to implementing strategies that can reduce green house gas emissions in low and moderate income neighborhoods. Those organizations need ongoing support.

The same social connective tissue and capacity may be critical to community resilience in adapting to climate change.